



# MILNER STREET

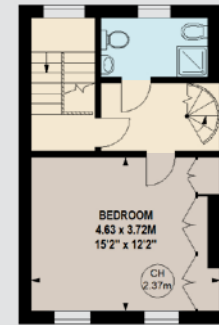
CHELSEA SW3



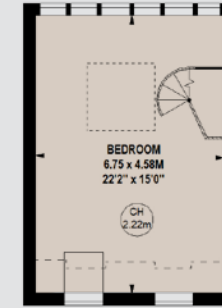


Built circa 1850 and now a mixed use freehold building measuring nearly 2,000 sq ft, with two offices occupying the lower two floors and a charming two bedroom flat set over the upper two floors complete with a fabulous private roof terrace.

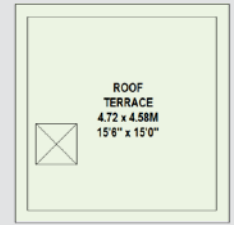
Milner Street is located within easy reach of the boutiques, restaurants and transport links of Sloane Square and the King's Road.



Second Floor



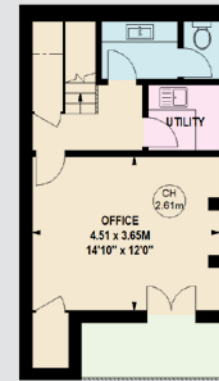
Third Floor



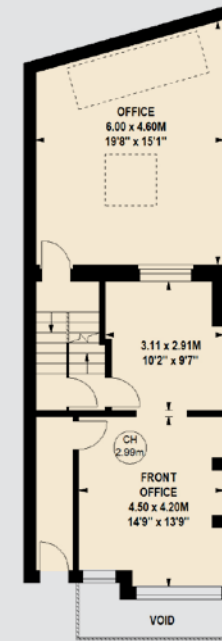
Roof Terrace



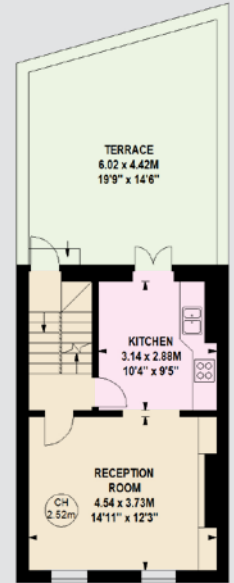
Approximate gross internal area  
190.26 sq m /  
2,048 sq ft



Lower Ground Floor



Ground Floor



First Floor



Energy Efficiency Rating		
	Current	Potential
Vary energy efficient - lower running costs		
(92+)	A	83
(81-91)	B	
(69-80)	C	
(55-68)	D	
(39-54)	E	
(21-38)	F	
(1-20)	G	
Not energy efficient - higher running costs		
England & Wales		EU Directive 2002/91/EC

#### Features

- Two Office Unit
- Separate Two Bedroom Flat
- Roof Terrace

**Price £2,495,000**  
**Tenure Freehold**

These details have been prepared for general guidance only and should not be relied upon by prospective purchasers/tenants who before proceeding must check and otherwise satisfy themselves as to the property and the nature, state and availability of any facility or service.



www.nicolasvanpatrick.com