



170 South Avenue, Abingdon OX14 1QX



170 South Avenue

Substantial extended four-bedroom semi-detached family home well situated within this highly sought after non-estate North Abingdon location, sold with no ongoing chain

170 South Avenue is situated in a sought after non-estate North Abingdon location providing a very pleasant overall setting complemented by easy pedestrian access to many nearby amenities including excellent primary and secondary schooling. There is a quick route onto the A34 leading to many important destinations both north and south including Oxford city (circa. 6 miles) and the nearby Radley railway station (circa 2 miles) is ideal for commuters to Reading and London.

Bedrooms: 3

Bathrooms: 2

Reception Rooms: 2

Council Tax Band: D

Tenure: Freehold

EPC: D





Key Features

- Entrance hall leading to spacious double aspect living room through to the dining room featuring an attractive brick fireplace
- Kitchen complemented by separate utility room
- Double glazed Conservatory with hard tiled floor overlooking the rear gardens
- Very large master bedroom with an extensive selection of fitted wardrobe cupboards and en-suite facilities
- Three further bedrooms complemented by family bathroom
- Double glazed windows, mains gas radiator central heating and the property is sold with no ongoing chain
- Wide front gardens incorporating block paved hard standing parking facilities for several vehicles leading to the large integral garage complemented by mature flower and shrub borders
- Attractive rear gardens featuring extensive patio providing delightful seating areas surrounded by mature flower and shrub borders before leading to wooden garden store - the whole enclosed by fencing









BRITISH
PROPERTY
AWARDS
2024

GOLD WINNER

ESTATE AGENT
IN ABINGDON



Introducing the Hodsons team...
...trust in our experience!



South Avenue, OX14

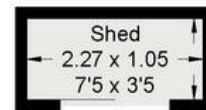
Approximate Gross Internal Area = 120.80 sq m / 1300 sq ft

Garage = 19.0 sq m / 204 sq ft

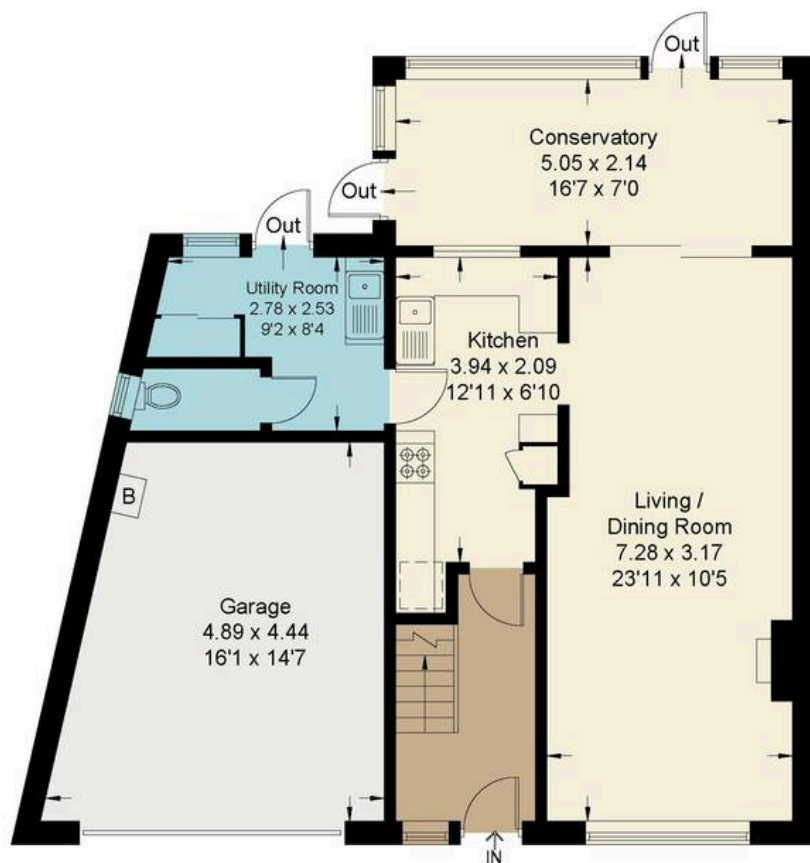
Shed = 2.40 sq m / 26 sq ft

Total = 142.20 sq m / 1530 sq ft

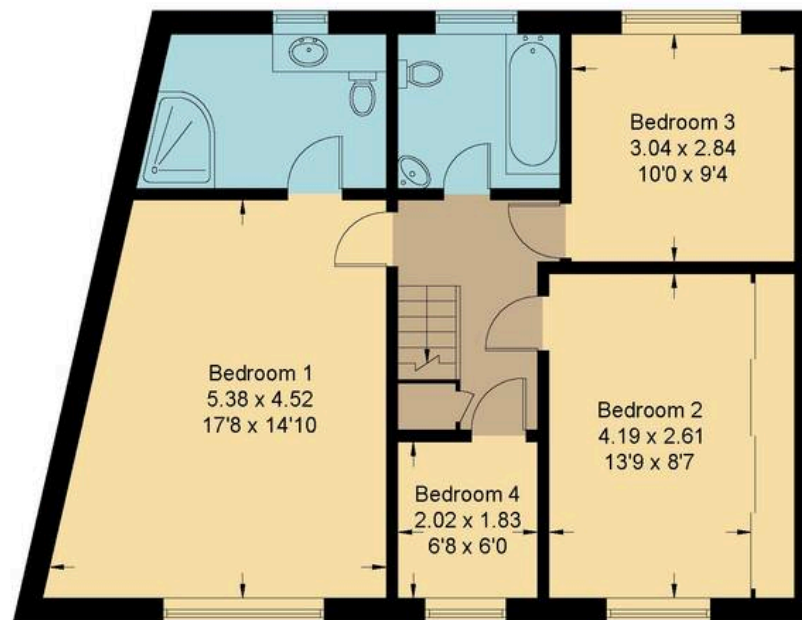
For identification only - Not to scale



(Not Shown In Actual Location / Orientation)



Ground Floor



First Floor

