

REZIDE



Somerset Close, Burton-On-The-Wolds,

£299,950

Bed - 3 Bath - 1 Rec - 2

A detached bungalow in one of Burton on the Wolds' most peaceful cul-de-sac positions, offering mature gardens, generous accommodation and an outstanding opportunity to create a wonderful home through renovation and modernisation.

- Detached three-bedroom bungalow
- Quiet cul-de-sac setting
- Sought-after Burton on the Wolds location
- Spacious lounge diner with garden outlook
- Extended entrance porch
- Kitchen and family bathroom
- Detached garage and driveway
- Requires full modernisation throughout
- Excellent potential to improve, remodel or extend (STPP)
- No upward chain

Tenure - Freehold

Council Tax Band - D

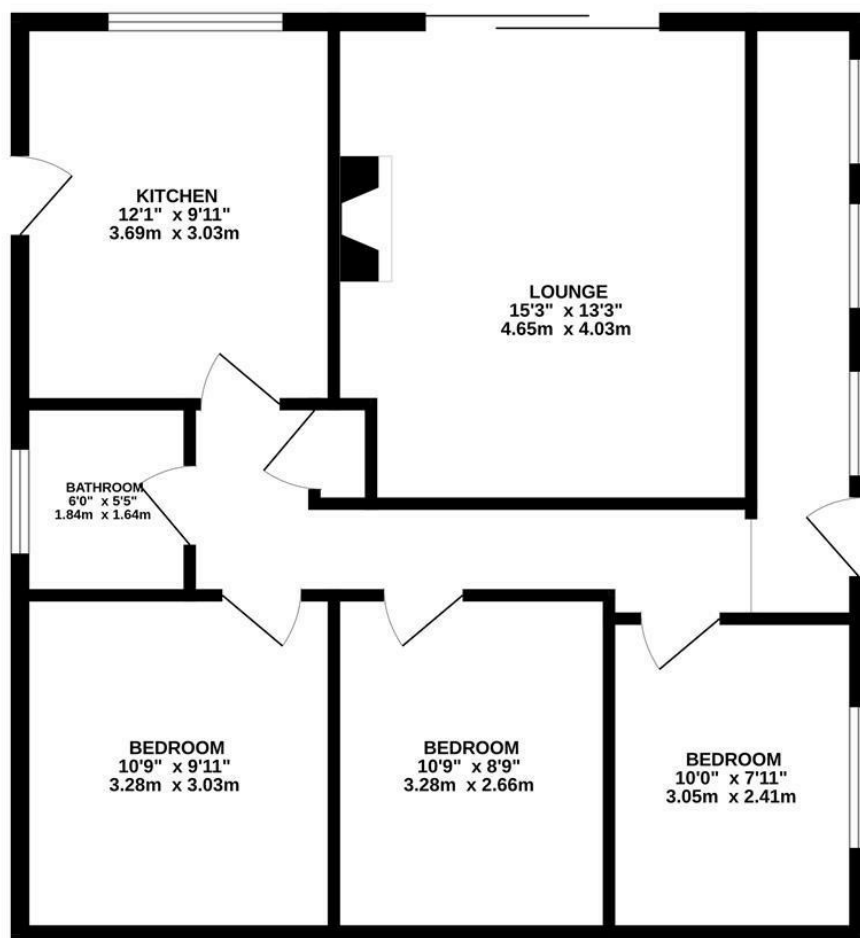
Energy Efficiency Rating	
Band	Score
A	92-100
B	81-91
C	69-80
D	55-68
E	39-54
F	21-38
G	1-20

England & Wales





GROUND FLOOR
762 sq.ft. (70.8 sq.m.) approx.



TOTAL FLOOR AREA: 762 sq.ft. (70.8 sq.m.) approx.

Whilst every attempt has been made to ensure the accuracy of the floorplan contained here, measurements of doors, windows, rooms and any other items are approximate and no responsibility is taken for any error, omission or mis-statement. This plan is for illustrative purposes only and should be used as such by any prospective purchaser. The services, systems and appliances shown have not been tested and no guarantee as to their operability or efficiency can be given.
Made with Metropix ©2026

REZIDE

01509 274474



info@rezide.group