



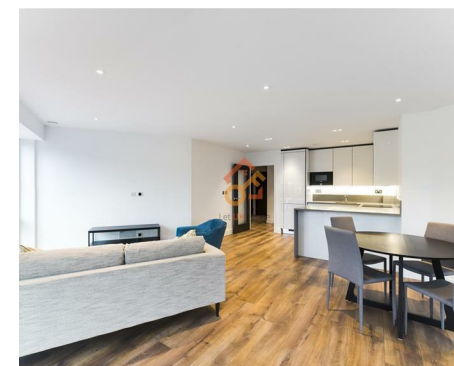
Let **UK** Home

**2 Bedrooms**

**Flat**

**Located in London**

**£880,000**



[info@letukhome.co.uk](mailto:info@letukhome.co.uk)

<https://www.letukhome.co.uk/>

01795 358 886



# 12 New Broadway London

W5 2XA



Let UK Home are excited to offer this spectacular 2-bedroom apartment in the heart of Quartz House, part of the Dickens Yard development.

This property comprises a large bright open plan kitchen and living room leading to a private balcony with great views, two double bedrooms (with a wardrobe and en-suites), a large family sized bathroom, and ample storage.

The centrepiece of Dickens Yard is its elegant private spa. It will feature a professionally equipped, state-of-the-art gymnasium, swimming pool, luxury sauna, steam room and personal treatment room, it provides a tranquil haven where residents can relax, exercise and escape the many demands and pressures of their busy lives. Furthermore, residents will also benefit from a concierge and an unrivalled selection of shops, bars, restaurants, leisure facilities and beautiful courtyards.

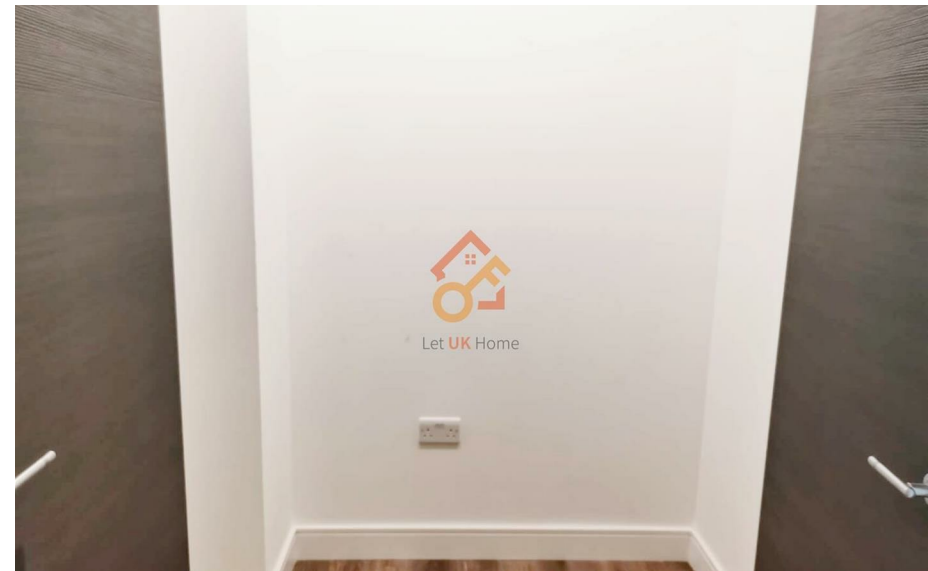
Dickens Yard is home to stylish and modern residences, a variety of boutique shops, and delicious and exquisite restaurants. Ealing Broadway Station is just a stone's throw away, providing effortless access to all the capital's myriad attractions, including prestigious shopping destinations such as Bond Street, Regent Street and Knightsbridge, and London's largest retail centre at Westfield. The development is surrounded by cultural heritage with rich historical background. Nearby, there are the most attractive cultural sanctuaries such as Ealing Studios (the world's earliest film shooting base) and Ealing Jazz Club.

# 12 New Broadway London

£880,000 Leasehold



- 6th Floor
- 24h Security
- Swimming Pool
- CCTV
- Concierge Service
- The Gym
- Sauna & Steam Room
- EPC Rating: B



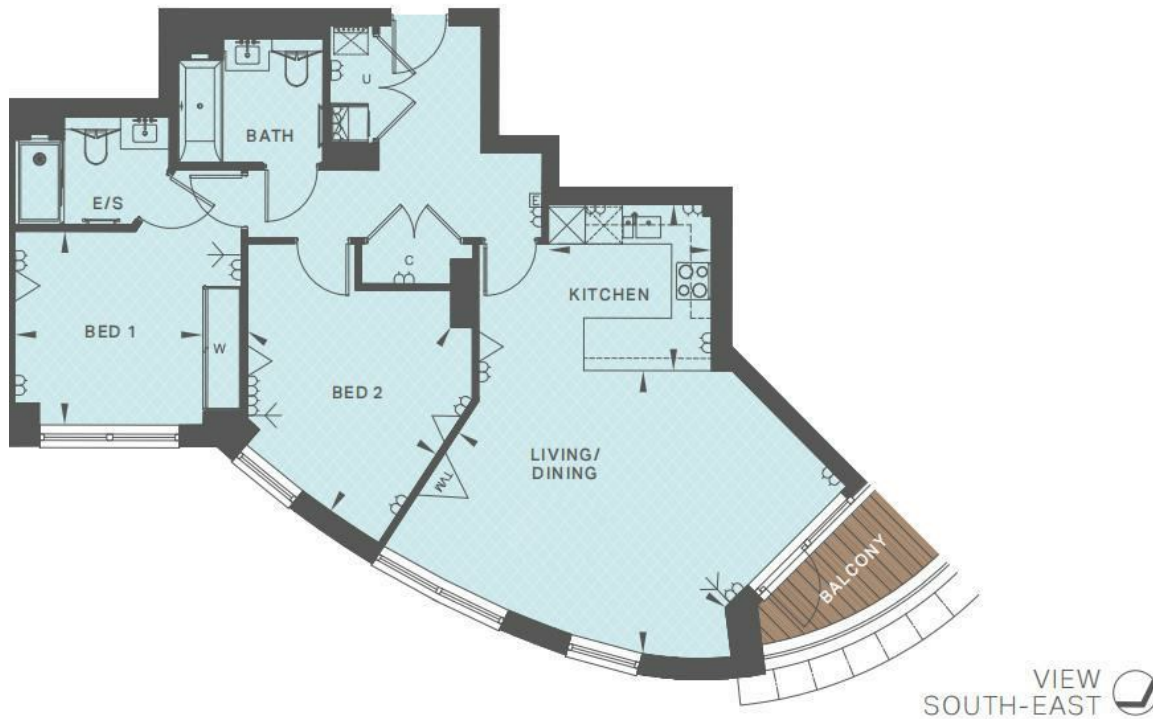


Let **UK** Home

3F 2 Eastbourne Terrace  
Paddington  
London  
W2 6LG

01795 358 886

info@letukhome.co.uk



**Council Tax Band: E**

**Local Authority:**

Agents Note: Whilst every care has been taken to prepare these particulars, they are for guidance purposes only. All measurements are approximate and are for general guidance purposes only and whilst every care has been taken to ensure their accuracy, they should not be relied upon and potential buyers/tenants are advised to recheck the measurements.

Energy Efficiency Rating		Current	Potential
Very energy efficient - lower running costs			
(92 plus) <b>A</b>			
(81-91) <b>B</b>			
(69-80) <b>C</b>		82	82
(55-68) <b>D</b>			
(39-54) <b>E</b>			
(21-38) <b>F</b>			
(1-20) <b>G</b>			
Not energy efficient - higher running costs			
<b>England &amp; Wales</b>	EU Directive 2002/91/EC		

<https://www.letukhome.co.uk/>