



Well Mead, Bredbury, SK6 3HG

Enjoying a corner plot within a small and sought-after cul-de-sac, this true bungalow enjoys views across Stockport and to Pear Mill. The property has been freshly decorated throughout and includes an entrance hall, 18ft living room with dining area, a fitted kitchen with adjoining utility porch, two bedrooms and a family bathroom with shower over the bath. Outside there is a detached garage and driveway along with attractive, private gardens to three sides. Local shops are within a short walk as is access to the beautiful open countryside of the Goyt River valley. Tenure: Freehold. Council Tax Band: B. EPC rating: D.

Price Guide: Offers Over £250,000



ENTRANCE HALL

LOUNGE/DINING ROOM

18' 0" x 11' 2" max (5.48m x 3.40m)



BEDROOM TWO

9' 10" x 7' 7" (2.99m x 2.31m)



DETACHED GARAGE

16' 0" x 8' 0" (4.87m x 2.44m)

OUTSIDE



KITCHEN

8' 0" x 6' 8" (2.44m x 2.03m)



BATHROOM

7' 10" x 5' 6" (2.39m x 1.68m)



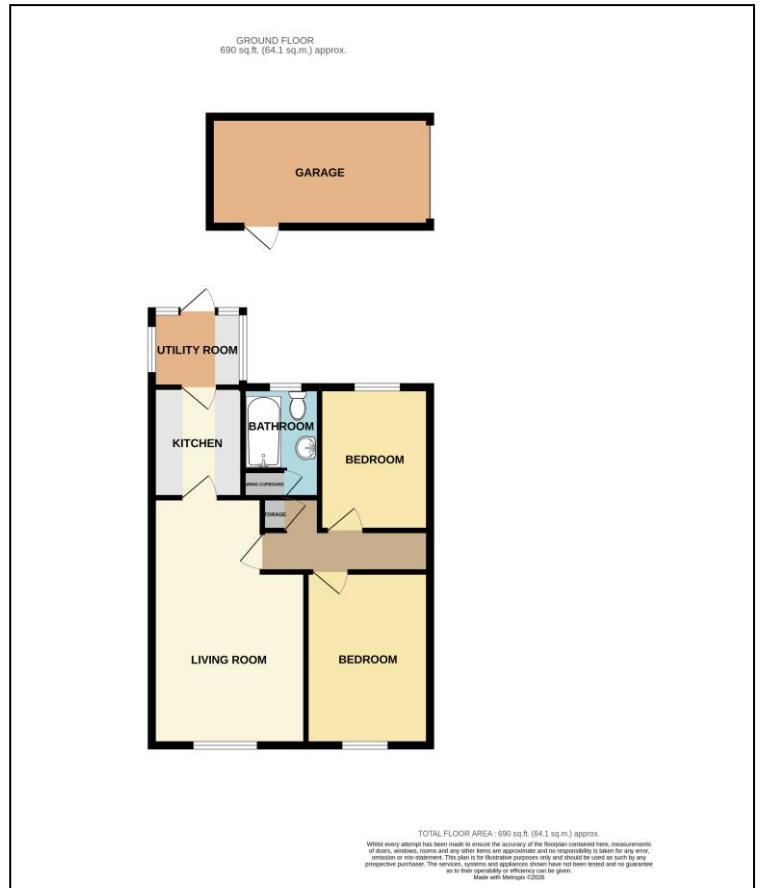
REAR PORCH/UTILITY

6' 8" x 5' 6" (2.03m x 1.68m)



BEDROOM ONE

12' 7" x 9' 0" (3.83m x 2.74m)



Thomas Lardner Estate Agents, which is a trading name of Romiley Residential Ltd, for themselves and for the vendors or lessors of this property whose agents they are give notice that: (1) all measurements are approximate and any plans provided are not to scale; (2) the particulars are set out as a general outline only for the guidance of intending purchasers or lessors, and do not constitute, nor constitute part of, an offer or contract; (3) we have not tested any apparatus, equipment, fixtures, fittings or services, and so cannot verify that they are in working order or fit for purpose; (4) solicitors should confirm moveable items described in these particulars are, in fact, included in the sale since circumstances change during marketing or negotiations.

T709 Printed by Ravensworth 01670 713330