



**Guide Price**  
**£315,000**

**Freehold**

3x  1x  2x 

**Brenzett Close,  
Walderslade, Chatham,  
Kent, ME5**

**OVER 60?**

Secure this property  
for up to **59% less!**

*Wards*  
Helping you move forwards



## Main features

- End of terrace house, neutral decor
- Allocated parking for added convenience
- Close to local schools and amenities, ideal for families
- Move-in ready with a clean, modern finish throughout
- A short drive to M2/M20 motorway links

## Accommodation

### GROUND FLOOR

Lounge: 13'7 x 12'3 (4.14m x 3.74m)

Dining Area : 9'7 x 8'4 (2.92m x 2.54m)

Kitchen : 9'4 x 7'1 (2.85m x 2.16m)

### FIRST FLOOR

Landing

Bedroom 1 : 11'5 x 9'6 (3.48m x 2.90m)

Bedroom 2 : 11'4 x 8'4 (3.46m x 2.54m)

Bedroom 3 : 8'3 x 6'9 (2.52m x 2.06m)

Bathroom : 6'4 x 5'8 (1.93m x 1.73m)

### OUTSIDE

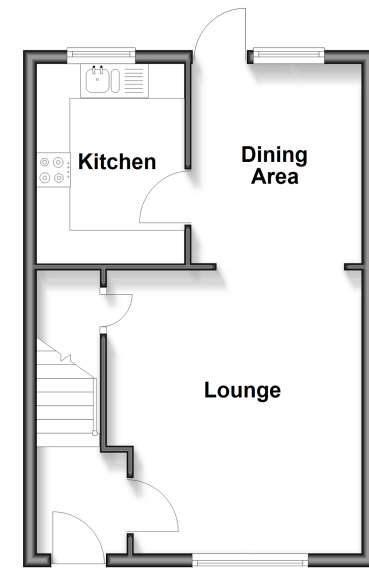
Front Garden

Rear Garden

Allocated Parking

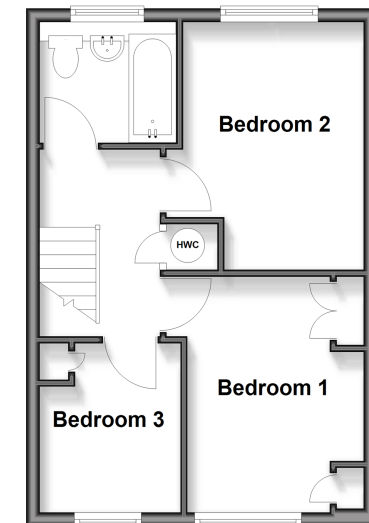
### Ground Floor

Approx. 34.4 sq. metres (370.7 sq. feet)



### First Floor

Approx. 34.4 sq. metres (370.7 sq. feet)



Call Walderslade - 01634 865661 ■ [wardsofkent.co.uk](http://wardsofkent.co.uk)

- Legal advice should be taken to verify fixtures/fittings, planning, alterations and/or lease details
- Appliances & services are untested, dimensions are approximate and floor plans are not to scale
- Through a Homewise Home For Life Plan people aged 60+ can secure this property for up to 50% less, by purchasing a Lifetime Lease.



12144604/20251125/ML/AH