



Conisborough Crescent, SE6 | £625,000

02087029777

[sydenham@pedderproperty.com](mailto:sydenham@pedderproperty.com)

**pedder**  
We live local



# In General

- Superb family house
- Through reception
- Kitchen / dining room
- Five bedrooms
- Four bathrooms
- Garden studio

# In Detail

This characterful 1930's family home offers five bedrooms, four bathrooms, and an extended kitchen / dining / family space, along with a Garden studio and garden.

Positioned on Conisborough Crescent, a well regarded residential road with a strong sense of community, the property is ideally located for access to green open spaces and Bellingham station.

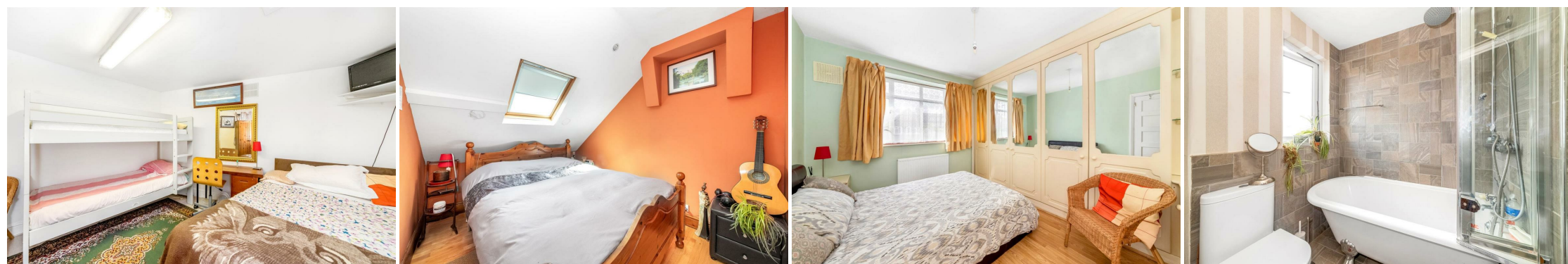
A bright entrance hall creates an immediate sense of space and light, leading into interiors that are both well proportioned and inviting. True to its 1930s design, the house benefits from wider rooms, generous ceiling heights, and an abundance of natural light throughout its 1,397 sq ft footprint.

To the front, the through reception room is full of character, creating a warm and inviting setting. To the rear, the extended open plan kitchen / living area is the centrepiece of the home, a spacious, sociable room designed for modern living. The garden is low maintenance and leads into the Garden studio which is both generous and well considered, ideal for everyday use, home working or a creative use. Side access also adds a practical touch. Upstairs, there are four well sized double bedrooms, a further smaller double, and a single bedroom, along with an en-suite and a family bathroom. The layout is both functional and flexible, well suited to family life.

Overall, the house strikes an excellent balance between character and practicality, offering a warm, comfortable home.

Conisborough Crescent is known for its friendly, neighbourly feel, making it a particularly appealing setting for families.

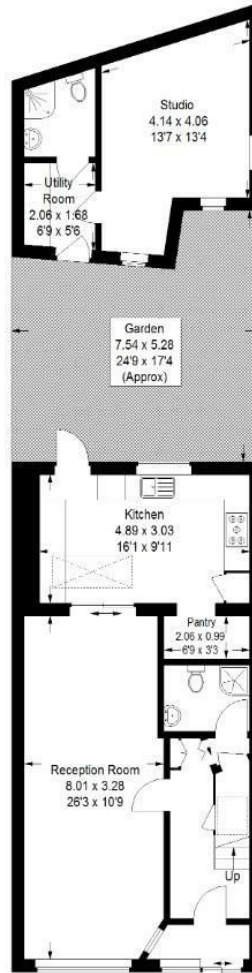
EPC: C | Council Tax Band: D



# Floorplan

## Conisborough Crescent, SE6

Approximate Gross Internal Area  
 129.8 sq m / 1397 sq ft  
 Studio = 21.7 sq m / 234 sq ft  
 Total = 151.5 sq m / 1631 sq ft

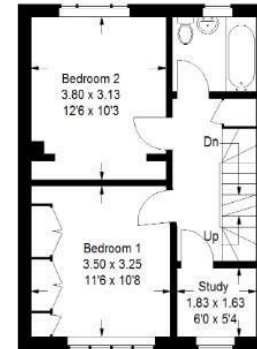


Ground Floor

= Reduced headroom below 1.5 m / 5'0"



Second Floor

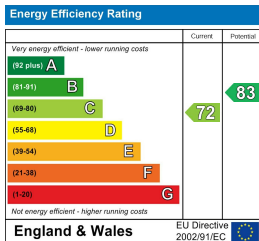


First Floor

Copyright www.pedderproperty.com © 2026

These plans are for representation purposes only as defined by RICS - Code of Measuring Practice.

Not drawn to Scale. Windows and door openings are approximate. Please check all dimensions, shapes and compass bearings before making any decisions reliant upon them.



Pedder Property Ltd trading as Pedder for themselves and for the vendor/landlord of this property whose agents they are, give notice that (1) these particulars do not constitute any part of an offer or contract, (2) all statements contained within these particulars are made without responsibility on the part of Pedder or the vendor/landlord, (3) whilst made in good faith, none of the statements contained within these particulars are to be relied upon as a statement of representation or fact, (4) any intending purchaser/tenant must satisfy him/herself by inspection or otherwise as to the correctness of each of the statements contained within these particulars, (5) the vendor/landlord does not make or give either Pedder or any person in their employment any authority to make or give representation or warranty whatsoever in relation to this property.