



**Golden Lane, London EC1Y**  
Price £875 per week - Furnished







## Description

This beautifully appointed fourth-floor residence offers sophisticated living with a generously proportioned reception room opening onto a private east-facing balcony, capturing abundant morning light. The accommodation comprises two well-designed bedrooms with bespoke fitted wardrobes in the master suite, two elegant bathrooms, and a sleek contemporary kitchen. Premium wood flooring and thoughtful storage solutions throughout enhance the apartment's refined appeal.

Residents enjoy exclusive access to 24-hour concierge services, an entertaining games room, private cinema, and peaceful study area. Superbly connected within London's coveted Square Mile, the development sits just 0.2 miles from Barbican station and 0.5 miles from Moorgate station, both Zone 1, placing the capital's premier financial district literally on your doorstep.

Council tax band: G. Rent is payable on a monthly basis and you may be required to pay more than a month's rent in advance, depending on your circumstances. You will be required to pay a 1 week holding deposit following a successful offer. Tenancies with annual rents up to £50,000 will require a 5 weeks' security deposit, while those exceeding this threshold will require a 6 weeks' deposit. Utility bills, council tax, telephone line and broadband are not included in the rent. As well as paying the rent, you may also be required to make some additional permitted payments. If your tenancy does not qualify as an AST, additional fees may apply. Please visit [jll.co.uk/fees](http://jll.co.uk/fees) for details of fees that may be payable when renting a property. To check broadband and mobile phone coverage please visit Ofcom here [ofcom.org.uk/phones-telecoms-and-internet/advice-for-consumers/advice/ofcom-checker](http://ofcom.org.uk/phones-telecoms-and-internet/advice-for-consumers/advice/ofcom-checker)

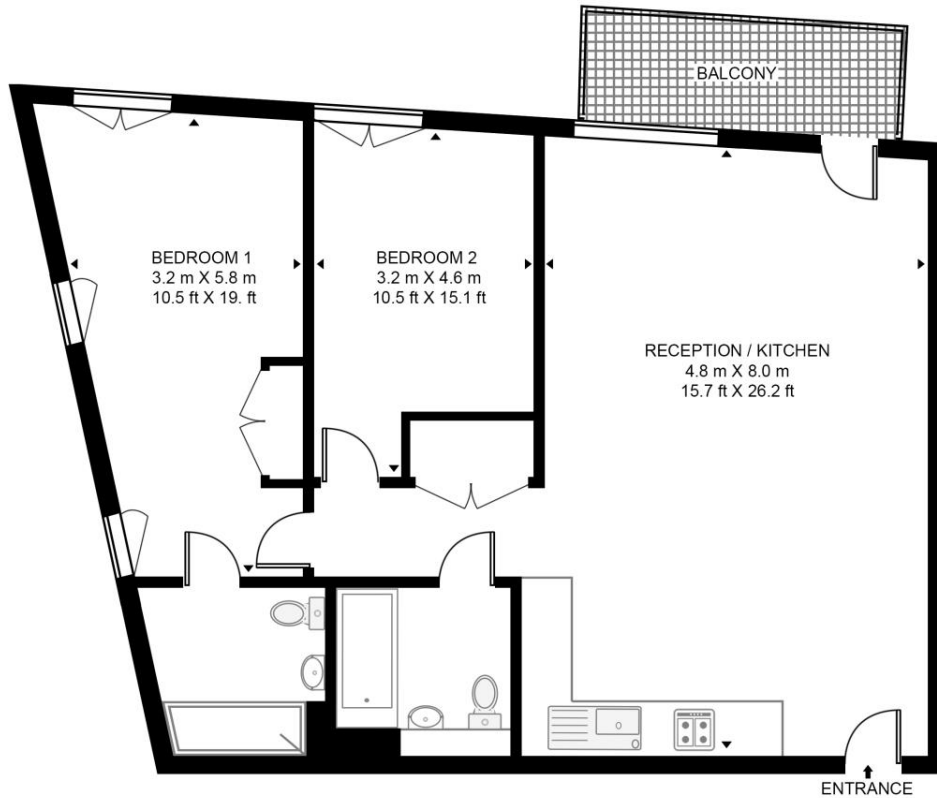
- 2 Bedrooms
- 2 Bathrooms
- 4th Floor modern apartment
- South-facing private balcony
- 24hr concierge
- Onsite facilities, cinema and games room
- 0.2 miles from Barbican station
- 0.5 miles from Moorgate station
- Zone 1
- Approx. 912 sq ft / 84.7 sq m

# Floorplan

912 sq ft | 85 sq m

## CLARENDON COURT, 43 GOLDEN LANE

APPROXIMATE GROSS INTERNAL FLOOR AREA 912 SQ.FT (84.7 SQ.M)



### FOURTH FLOOR



This floor plan has been defined by the RICS Code of Measurement. This floor plan and all others are for approximate representative purposes only and upon usage is agreed to as such by the client.

WWW: [hdvirtualart.com](http://hdvirtualart.com) | TEL: 0203.974.1567 | EMAIL: [info@hdvirtualart.com](mailto:info@hdvirtualart.com)

City  
25 Walbrook The Walbrook  
Building,  
London EC4N 8AF  
+4420 7337 4000

*Urban living, your way.*

[jll.co.uk/residential](http://jll.co.uk/residential)

© 2019 Jones Lang LaSalle IP, Inc. All rights reserved. All information contained herein is from sources deemed reliable; however, no representation or warranty is made to the accuracy thereof.

