

## Palmerston Road, London, W3 8FP

A lovely two double bedded apartment situated in this modern building amongst an area of substantial development in recent years. Local shopping facilities are close at hand whilst within walking distance are the more extensive shopping facilities of both Chiswick High Road and Acton High Street. The accommodation provides: spacious open plan living area with modern kitchen and breakfast bar, doors to sun soaked West facing balcony, master double bedroom with full-width fitted wardrobes, tiled en-suite and doors to a private terrace, additional double bedroom with wardrobes, luxury family tiled bathroom, entrance hall with excellent storage and utility cupboard, secure entry system, wood floors throughout. Local transport links include South Acton station (Mildmay Overground), Acton Town (District & Picadilly Lines) & Chiswick Park tube station (District Line), numerous local bus routes with convenient access via A4/M4/A40 to central London, Heathrow & The West. Private parking space included. Ealing Council Band C. EPC-C. The property is offered as part furnished (as photographed) or unfurnished and available now.

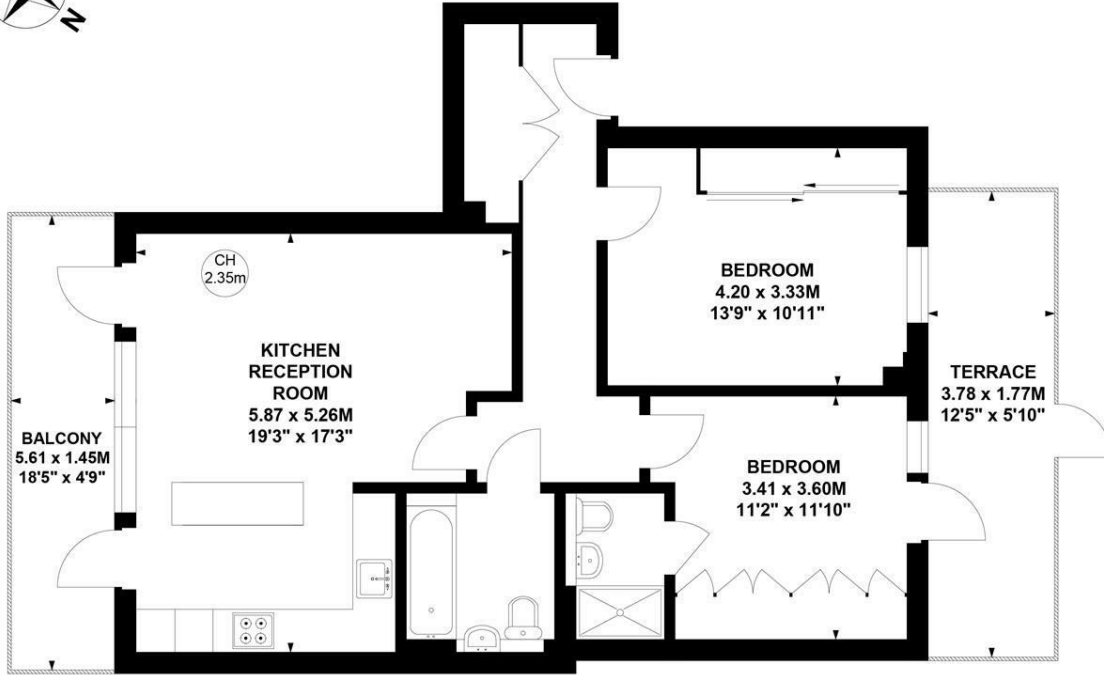
**£2,500 Per Calendar Month**

- Available now
- Private terrace and West facing balcony
- Private underground parking space
- Lovely modern development
- Good for transport links
- Bright open plan living area
- Two double bedrooms
- Wood floors to living areas
- Offered part furnished (as photographed) OR unfurnished

# Drummond Court, W3

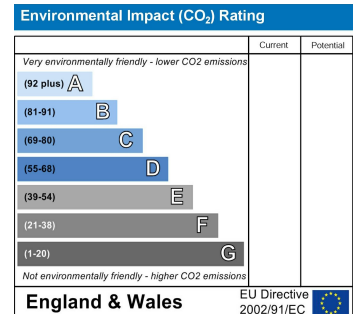
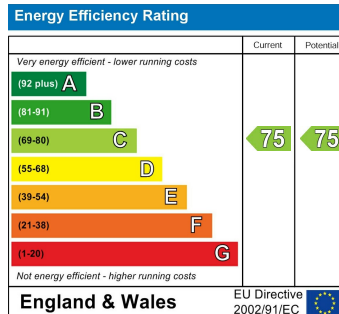
Approximate Gross Internal Area  
73.96 sq m / 796 sq ft

Key :  
CH - Ceiling Height



## First Floor

Not to scale, for guidance only and must not be relied upon as a statement of fact.  
All measurements and areas are approximate only



5-7 Turnham Green Terrace, Chiswick, London, W4 1RG

Tel 020 8747 8800

E-mail [lettings@whitmanandco.com](mailto:lettings@whitmanandco.com)

Website [www.whitmanandco.com](http://www.whitmanandco.com)



MISREPRESENTATION ACT 1967

Whitman & Co. for themselves and for the vendors give notice that these particulars do not constitute any part of, an offer of contract. All statements contained in these particulars are made without responsibility on the part of Whitman & Co. or the vendor. None of the statements contained in these particulars is to be relied upon as statements or representations of facts. Any intending purchaser must satisfy himself by inspection or otherwise as to the correctness of each of the statements contained in these particulars. The vendor does not make or give, and neither Whitman & Co. or any person in their employment has any authority to make or give, any representation or warranty whatever in relation to the property.