



nest
ESTATES

The Nook, Helpston

Peterborough, PE6 7DN

£350,000

SUMMARY

- Extended Three Bedroom Detached Bungalow
- Garage & Off Road Parking
- Enclosed Rear Garden Space
- Kitchen Dining Room
- Living Room With Log Burner
- Family Bathroom & En Suite To Master
- Conservatory
- Cul-De-Sac Location









A well-presented three-bedroom detached bungalow that's been extended, with garage, ideally positioned within a peaceful cul-de-sac in the sought-after village of Helpston. The accommodation offers a spacious kitchen/dining area, a welcoming living room featuring a log burner, and a generously sized principal bedroom with en-suite facilities. Two further bedrooms are served by a modern family bathroom. A bright conservatory with a newly fitted roof provides additional versatile living space and enjoys views over the enclosed rear garden.

Externally, the property benefits from off-road parking, a private garage, and a well-maintained rear garden, perfect for outdoor relaxation. Situated in a particularly quiet setting, this attractive home combines village charm with comfortable, contemporary living.

Location...

The charming village of Helpston offers a delightful blend of rural character and everyday convenience, making it a highly desirable location for a wide range of buyers. Steeped in history and surrounded by picturesque countryside, the village benefits from a welcoming community atmosphere along with a selection of local amenities, including a well-regarded primary school, traditional village pub, and a local shop catering for day-to-day needs. For those seeking a broader range of facilities, the historic market town of Stamford lies just a short drive away and is renowned for its Georgian architecture, boutique shopping, restaurants, and excellent schooling options. Meanwhile, the city of Peterborough is also within easy reach, offering extensive retail and leisure amenities, as well as a mainline railway station providing fast and frequent services to London.

The village is well placed for commuters, with convenient road links to surrounding towns and cities, while still enjoying the tranquillity of a countryside setting. With scenic walks on the doorstep and a strong sense of community, Helpston provides an ideal balance between rural living and accessibility.

Tenure: Freehold

EPC Rating: E

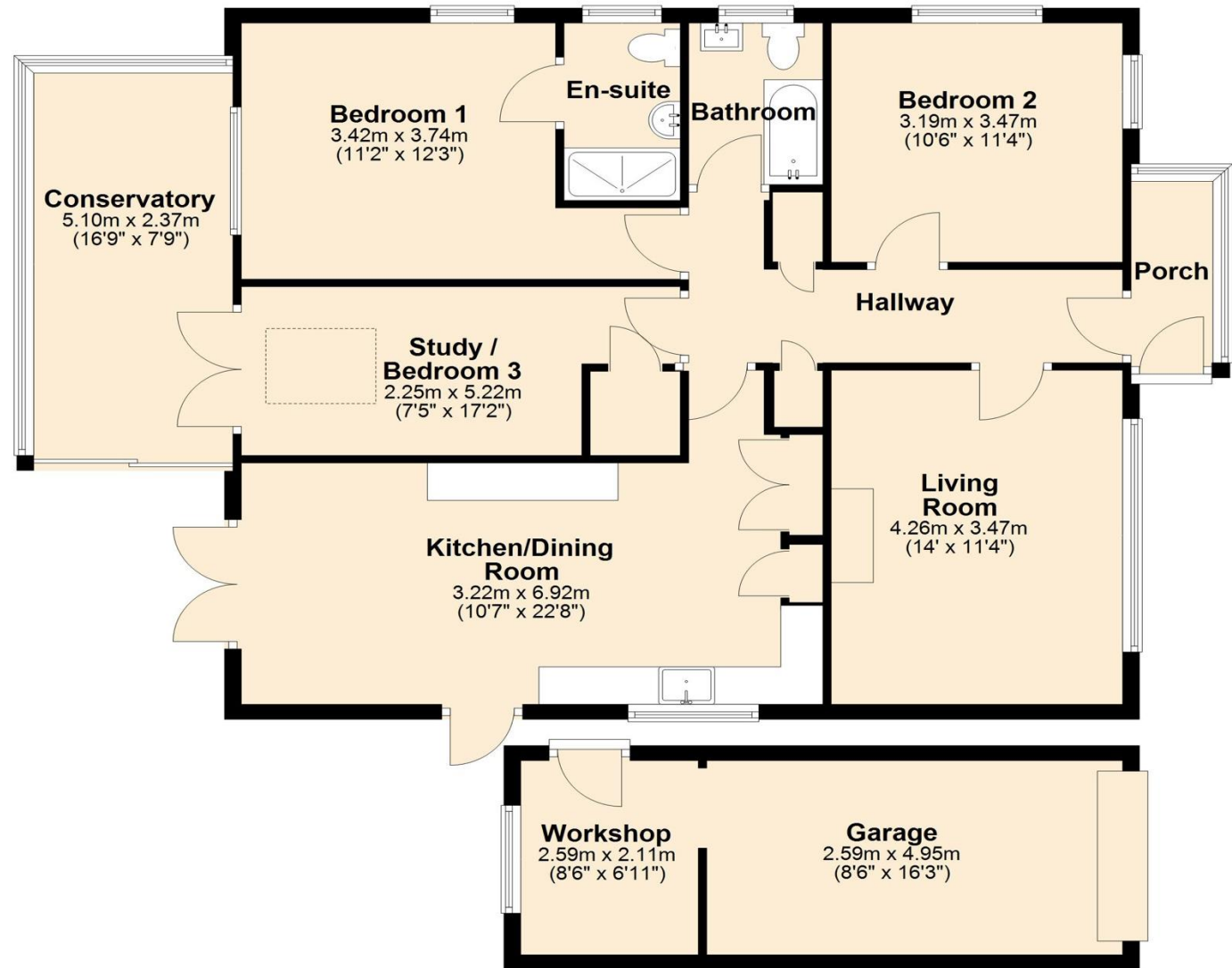
Council Tax Band: C

Local Authority: Peterborough Council

DISCLAIMER

Money Laundering Regulation: People who intend to purchase will be asked to show us documents to prove their identity. This will allow us to agree the sale and move forward with your purchase as quickly as possible. 2. We do our best to make sure our sales particulars are as accurate and reliable as we can. However, they are a general guide to the property and if something is particularly important to you, we will be happy to check information for you. As regards measurements, the approximate room sizes are intended as a general guide. You must verify dimensions of rooms yourself before ordering any carpets or furniture. 3. As regards services, we have not tested the services or any equipment including appliances in this property. We advise prospective buyers to carry out their own survey, service report before making their final offer to purchase. 4. This sales information has been issued in good faith. However, it does not constitute representation of fact or form part of any offer or contract. The information referred to in these particulars should be independently verified by any prospective buyer or tenant. Neither Nest Estates nor any of its employees has the authority to make or give any representation or warranty whatever in relation to this property.

Ground Floor
Approx. 127.5 sq. metres (1372.5 sq. feet)



Total area: approx. 127.5 sq. metres (1372.5 sq. feet)

nest
ESTATES

8-9 Red Lion Street Stamford Lincolnshire PE9 1PA

01780 238110

info@nestestates.co.uk

www.nestestates.co.uk