

Goldsmiths Row, London E2

Price £695 per week - Furnished







Description

Positioned in the vibrant heart of Bethnal Green, this contemporary two-bedroom apartment offers an exceptional lifestyle opportunity with the unique advantage of overlooking Hackney City Farm. The living space is thoughtfully designed with an emphasis on natural light and modern comfort, featuring an open-plan layout that creates a welcoming atmosphere for relaxing and entertaining.

The accommodation comprises a stylish reception room that flows seamlessly into a well-appointed kitchen with integrated appliances, complemented by two comfortable bedrooms and two sleek bathrooms. The private balcony provides a delightful outdoor retreat where residents can enjoy the distinctive urban setting adjacent to the city farm, offering a rare connection to nature within this dynamic London location.

This vibrant part of East London offers an authentic neighbourhood experience with the celebrated Broadway Market just moments away, hosting an array of independent shops, artisan food stalls, and charming cafés. Victoria Park is within easy reach, providing extensive green space perfect for recreation and leisure activities. Transport connections are excellent, with Bethnal Green Underground and Cambridge Heath stations providing swift access to the City and beyond, making this an ideal base for professionals working throughout London.

Council tax band: D. Rent is payable on a monthly basis and you may be required to pay more than a month's rent in advance, depending on your circumstances. You will be required to pay a 1 week holding deposit following a successful offer. Tenancies with annual rents up to £50,000 will require a 5 weeks' security deposit, while those exceeding this threshold will require a 6 weeks' deposit. Utility bills, council tax, telephone line and broadband are not included in the rent. As well as paying the rent, you may also be required to make some additional permitted payments. If your tenancy does not qualify as an AST, additional fees may apply. Please visit jll.co.uk/fees for details of fees that may be payable when renting a property. To check broadband and mobile phone coverage please visit Ofcom here ofcom.org.uk/phones-telecoms-and-internet/advice-for-consumers/advice/ofcom-checker

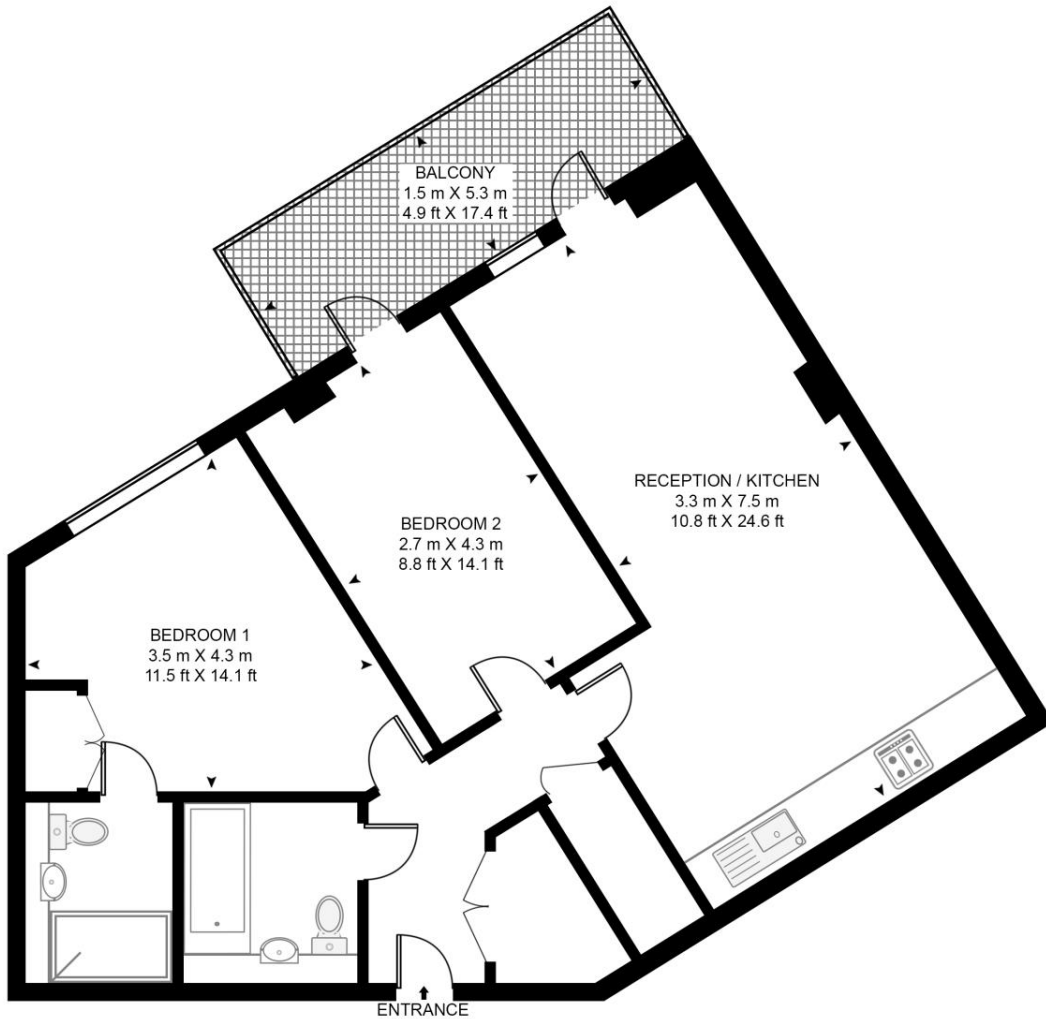
- apartment
- Two modern bathrooms
- Private balcony
- Bethnal Green location
- Adjacent to Hackney City Farm
- Contemporary open-plan living
- Natural light throughout
- Broadway Market nearby
- Excellent transport connections
- Council tax: Band D

Floorplan

785 sq ft | 73 sq m

GRACE ALLEN COURT

APPROXIMATE GROSS INTERNAL FLOOR AREA 785 SQ.FT (72.9 SQ.M)



THIRD FLOOR



This floor plan has been defined by the RICS Code of Measurement. This floor plan and all others are for approximate representative purposes only and upon usage is agreed to as such by the client.
WWW: hdvirtualart.com | TEL: 0203.974.1567 | EMAIL: info@hdvirtualart.com

City
25 Walbrook The Walbrook
Building,
London EC4N 8AF
+4420 7337 4000

Urban living, your way.

jll.co.uk/residential

© 2019 Jones Lang LaSalle IP, Inc. All rights reserved. All information contained herein is from sources deemed reliable; however, no representation or warranty is made to the accuracy thereof.

