



2 Old Barn, Old Hutton

Kendal

Guide Price £350,000

## 2 Old Barn

Old Hutton, Kendal

Located in a sought-after rural setting, this charming three-bedroom semi-detached barn conversion offers a unique living experience with great views. The well presented property spans over three floors, showcasing a blend of modern comforts and historical charm through its period features.

There is a spacious lounge featuring a cosy wood burner, creating a warm and inviting atmosphere. The dining kitchen is complemented by a garden room, providing a tranquil space to enjoy meals and admire the surroundings. A useful utility room adds convenience to the household.

The property boasts three well-appointed bedrooms, offering ample space for family or guests along with a bathroom and separate shower room.

The property includes a garden and parking area, ensuring comfort and accessibility for residents. This residence presents a rare opportunity to experience countryside living at its finest, making it a desirable property for those seeking a peaceful retreat.





### **Entrance Porch**

4' 1" x 5' 1" (1.25m x 1.54m)

At the front of the property, you will see a period stone-covered porch with tiled floor that houses the gas meter. There is entrance to the hallway through the glazed door.

### **Hallway**

13' 10" x 5' 2" (4.22m x 1.57m)

Entrance hallway with tiled flooring; doors lead to the utility, shower room, and kitchen. Stairs lead up to the first floor.

### **Kitchen/Dining Room**

18' 1" x 9' 6" (5.50m x 2.90m)

This kitchen has a range of fitted storage units with a complementary worktop. There is an integrated Bosch oven and induction hob with an extractor fan over, a 11/2-bowl sink, a Bosch-fitted dishwasher, and an attractive alcove-beamed window. A great space for a dining area and a window and door that lead to the garden room.

### **Garden Room**

9' 8" x 11' 1" (2.94m x 3.37m)

Garden room with wooden flooring, two Velux windows and French doors to the garden, and wall-length windows that bring in lots of light.

### **Utility Room**

9' 7" x 5' 8" (2.92m x 1.72m)

With a range of wall units, this room comprises tiled flooring, a worktop, a space undercounter for a fridge and freezer, space and plumbing for a washing machine and tumble dryer, and a window to the front of the property.

### **Shower Room**

8' 1" x 3' 9" (2.47m x 1.14m)

This room consists of tiled walls and flooring, a ladder radiator, a vanity wash hand basin, and a shower.

### **First Floor Landing**

8' 11" x 11' 2" (2.73m x 3.41m)

Doors open to the second bedroom, the lounge, and the external door opens to the rear porch. Stairs continue up to the second floor.







### Entrance Porch

4' 1" x 5' 1" (1.25m x 1.54m)

At the front of the property, you will see a period stone-covered porch with tiled floor that houses the gas meter. There is entrance to the hallway through the glazed door.

### Hallway

13' 10" x 5' 2" (4.22m x 1.57m)

Entrance hallway with tiled flooring; doors lead to the utility, shower room, and kitchen. Stairs lead up to the first floor.

### Kitchen/Dining Room

18' 1" x 9' 6" (5.50m x 2.90m)

This kitchen has a range of fitted storage units with a complementary worktop. There is an integrated Bosch oven and induction hob with an extractor fan over, a 1 1/2-bowl sink, a Bosch-fitted dishwasher, and an attractive alcove-beamed window. A great space for a dining area and a window and door that lead to the garden room.

### Garden Room

9' 8" x 11' 1" (2.94m x 3.37m)

Garden room with wooden flooring, two Velux windows and French doors to the garden, and wall-length windows that bring in lots of light.

### Utility Room

9' 7" x 5' 8" (2.92m x 1.72m)

With a range of wall units, this room comprises tiled flooring, a worktop, a space undercounter for a fridge and freezer, space and plumbing for a washing machine and tumble dryer, and a window to the front of the property.

### Shower Room

8' 1" x 3' 9" (2.47m x 1.14m)

This room consists of tiled walls and flooring, a ladder radiator, a vanity wash hand basin, and a shower.

### First Floor Landing

8' 11" x 11' 2" (2.73m x 3.41m)

Doors open to the second bedroom, the lounge, and the external door opens to the rear porch. Stairs continue up to the second floor.



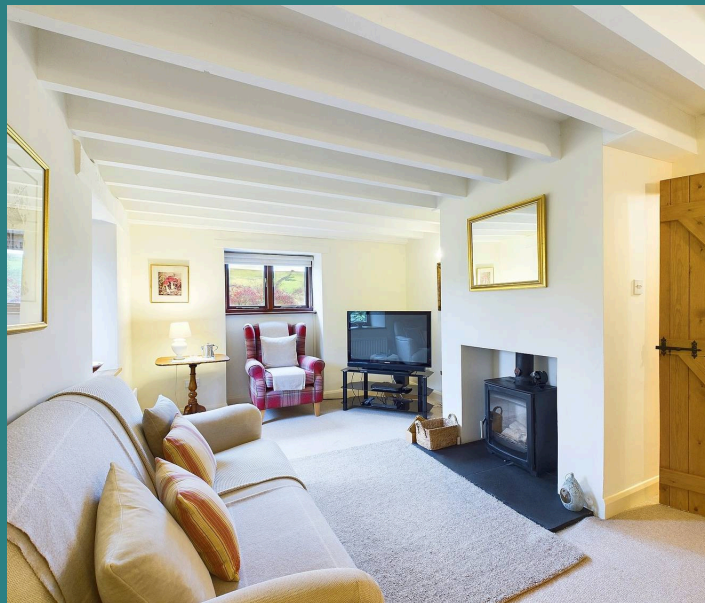
## GARDEN

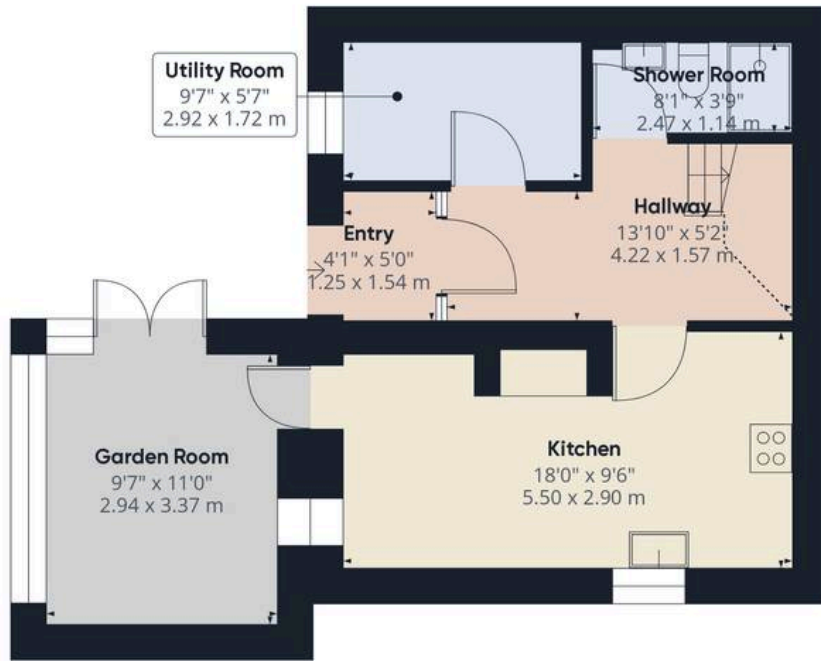
To the front of the property is a lovely established cottage garden with lawn, seating areas, decking and gated access to the parking area. To the rear is a covered porch and access for deliveries.

## OFF STREET

2 Parking Spaces

Shared parking

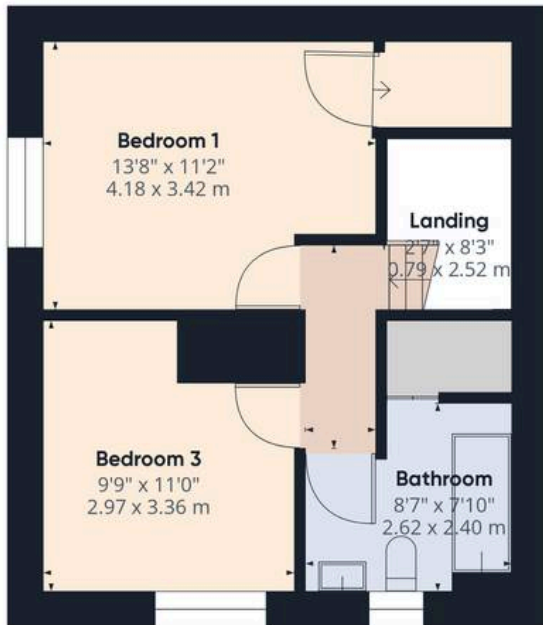




Ground Floor



Floor 1



Floor 2



## Arnold Greenwood Estate Agents

Arnold Greenwood Solicitors, 8-10 Highgate - LA9 4SX

01539733383

[kendal@arnoldgreenwood.co.uk](mailto:kendal@arnoldgreenwood.co.uk)

[www.arnoldgreenwoodestateagency.co.uk/](http://www.arnoldgreenwoodestateagency.co.uk/)

Whilst every care has been taken in the preparation of these sales particulars, they are for guidance purposes only and no guarantee can be given as to the working condition of the various services and appliances. Measurements have been taken as accurately as possible but slight discrepancies may inadvertently occur. The agents have not tested appliances or central heating services. Interested applicants are advised to make their own enquiries and investigation before finalising their offer purchase. Money Laundering In the event of prospective purchasers making an offer on a property, in relation to the Money Laundering Regulations photographic ID and Utility bill showing your address will be required. Please contact the office for their information.

