



FINBOROUGH ROAD, SW10

£675,000

Two bedrooms
Two bathrooms
Double glazing
High ceilings
Wood flooring
Energy rating c

@marshandparsons
marshandparsons.co.uk

MARSH &
PARSONS



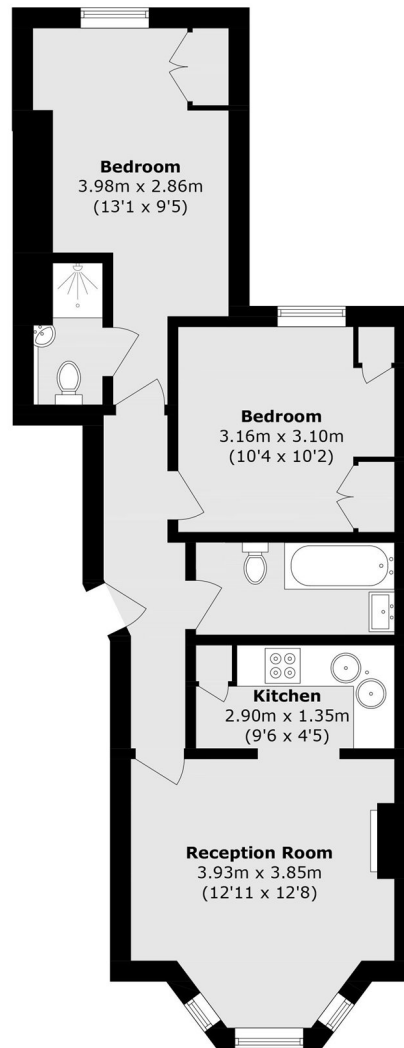
ABOUT THE PROPERTY

This beautifully presented two bedroom raised ground floor apartment on Finborough Road, SW10, offers approximately 570 sq ft of bright, modern living space. Located in a charming period conversion, it features high ceilings, wood flooring, a stylish open plan kitchen with integrated appliances, and a principal bedroom with built-in storage and en suite bathroom.

Situated in the heart of West Chelsea, a short walk from the beautiful Redcliffe Square Gardens, moments from the Fulham Road, offering easy access to cafes, shops, and restaurants. Excellent connectivity with West Brompton (District Line/Overground) and Earl's Court (District/Piccadilly Lines) stations close by.



STEP INSIDE FINBOROUGH ROAD



Raised Ground Floor

Total area (approx.): 52.8 sq. m (568.3 sq. ft)

Earls Court
020 7244 2210

Energy Rating: C We aim to make our particulars both accurate and reliable. However, they are not guaranteed; nor do they form part of an offer or contract. If you require clarification on any points then please contact us, especially if you're traveling some distance to view. Please note that appliances and heating systems have not been tested and therefore no warranties can be given as to their good working order

**MARSH &
PARSONS**