



WETHERELL
MAYFAIR'S FINEST PROPERTIES



Charles Street, W1J

£1,500 Per week

This striking two bedroom, two bathroom apartment is set across the second floor of one of Mayfair's most prestigious addresses.

Recently refurbished to an exceptional standard, the apartment has a spacious reception room, period features including high ceilings and elegant décor.

Charles Street is conveniently located for all the excellent shopping of New Bond Street and is close to Hyde Park, Green Park and St James' Park with great transport from Green Park and Bond Street Underground.

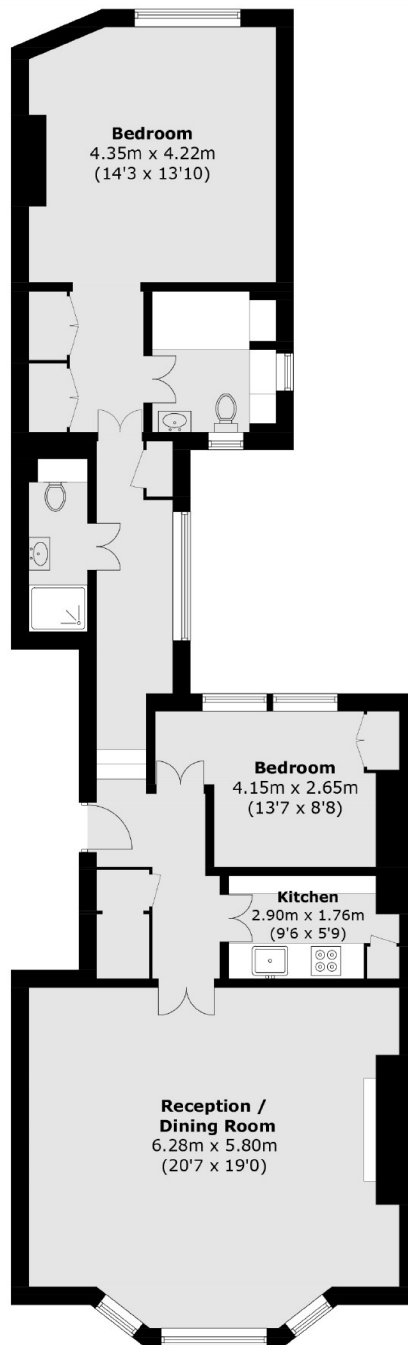


FEATURES

- Two Double Bedrooms • Two Bathrooms • Contemporary Finish • Separate Kitchen • Second Floor • Excellent Location •



Charles Street, London, W1J



Area (approx.): 97.3 sq. m (1,047.3 sq. ft)