



Brompton Park Crescent, SW6

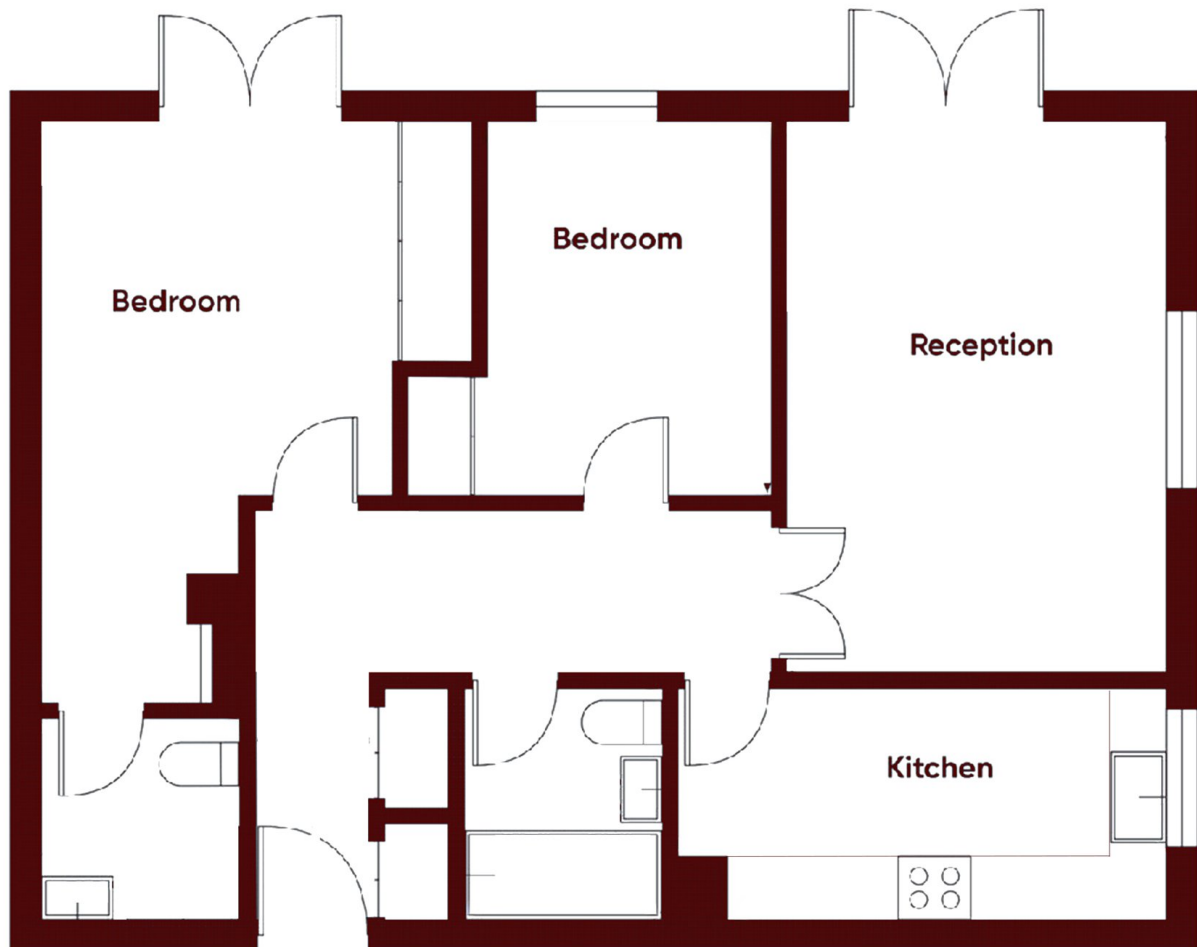
£625,000



• Two Double Bedrooms

• Access to Gym and Pool

• Two Bathrooms



Marsh & Parsons Fulham

103-105 Moore Park Road,
London, SW6 2DA
020 7736 9822

We aim to make our particulars both accurate and reliable. However, they are not guaranteed; nor do they form part of an offer or contract. If you require clarification on any points then please contact us, especially if you're traveling some distance to view. Please note that appliances and heating systems have not been tested and therefore no warranties can be given as to their good working order.