



Fulham Palace Road, SW6

£700,000

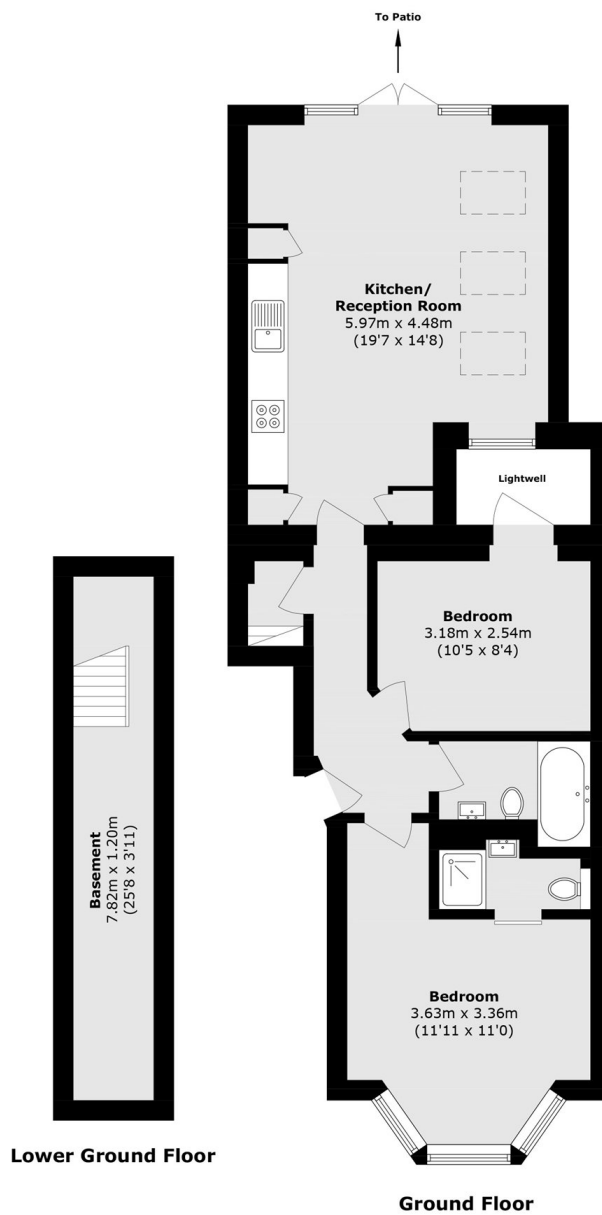
A beautifully renovated ground-floor garden flat. The property offers two double bedrooms and two bathrooms, including one en suite. The open plan kitchen/living area has been fully extended, featuring double doors leading out to a private garden.

Enviably located directly in front of Bishops Park and the River Thames, the flat is within close proximity to all the amenities on Fulham Palace Road as well as Parsons Green.

Features

- Two Double Bedrooms
- Two Bathrooms
- Private Garden
- Stylish Renovation
- Bay Windows
- Bishops Park

Fulham Palace Road, London, SW6



Total area (approx.): 72.6 sq. m (781.5 sq. ft)

Lightwell area (approx.): 2.3 sq. m (24.8 sq. ft)