



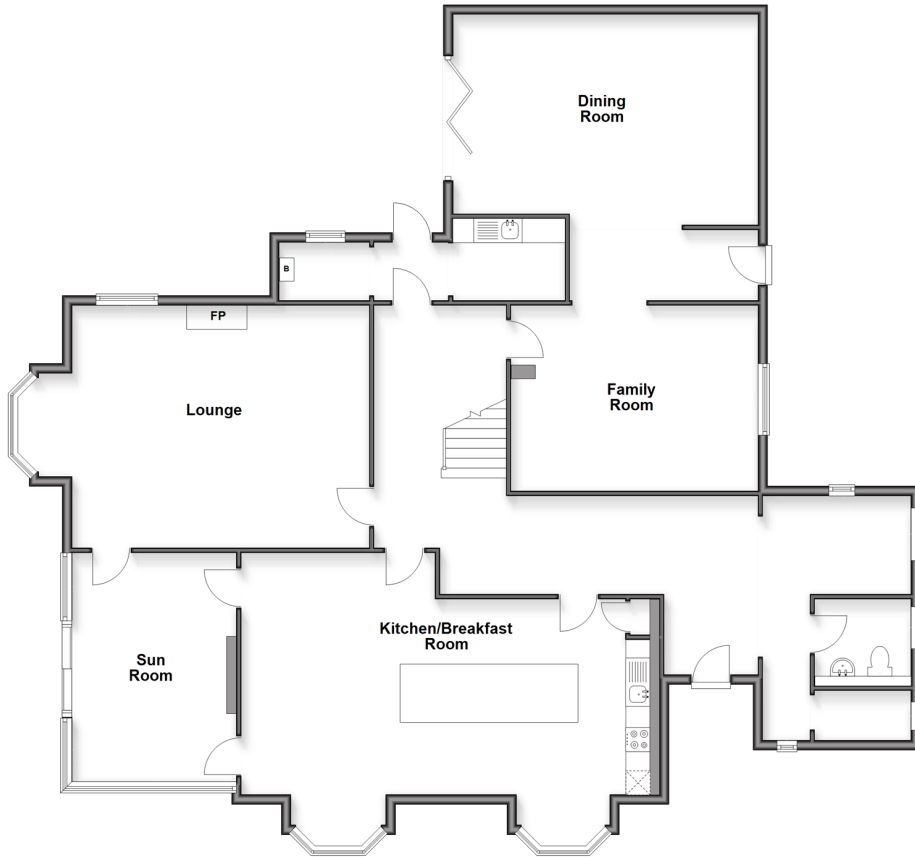
Guide Price
£1,695,000
Freehold

5x  3x  4x 

Blythe House, New Brighton Road,
Emsworth, Hampshire, PO10

cubitt & west
Helping you move forwards

Ground Floor
Approx. 200.8 sq. metres (2161.1 sq. feet)



First Floor
Approx. 181.9 sq. metres (1958.3 sq. feet)



Accommodation

GROUND FLOOR

Entrance Hall
 Lounge : 24'7 x 16'8 (7.50m x 5.08m)
 Dining Room : 20'8 x 13'5 (6.30m x 4.09m)
 Family Room : 16'3 x 12'0 (4.96m x 3.66m)
 Kitchen/Breakfast Room : 28'9 x 20'2 (8.77m x 6.15m)
 Sun Room : 15'5 x 10'0 (4.70m x 3.05m)
 Boot Room

Cloakroom

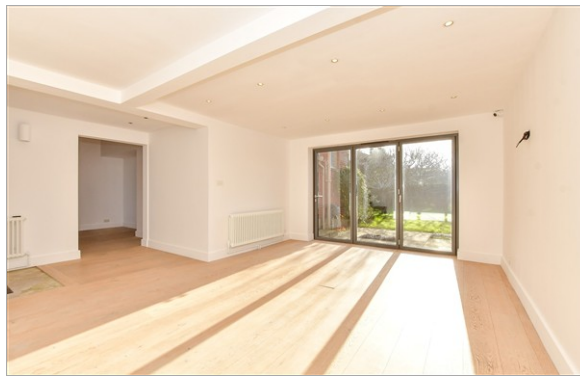
FIRST FLOOR

Landing
 Bedroom 1: 21'1 x 16'6 (6.43m x 5.03m)
 En-Suite Shower Room
 Bedroom 2 : 16'11 x 14'1 (5.16m x 4.30m)
 Bedroom 3: 16'11 x 14'7 (5.16m x 4.45m)
 Bedroom 4 : 16'7 x 12'4 (5.06m x 3.76m)
 Bedroom 5 : 20'10 x 12'9 (6.35m x 3.89m)
 Bathroom

Shower Room

OUTSIDE

Front & Rear Gardens
 Double Garage & Driveway



Main features

- Detached Luxury Edwardian Villa
- Original features
- Tastefully renovated to a high standard by current owners
- Bespoke handmade kitchen
- Glass sun room with views to garden
- Under floor heating
- Detached double garage with electric gates
- No forward chain

Nearest Schools

Primary Schools: St James C of E Controlled Primary 0.2 miles, Emsworth Primary 0.9 miles, Westbourne Primary 1.1 miles

Secondary Schools: Glenwood School 0.6 miles,

Transport Information

Train Stations: Emsworth 0.4 miles, Southbourne 2.2 miles, Nutbourne 2.4 miles

Address

Blythe House, New Brighton Road, Emsworth, Hampshire, PO10

Directions

For directions to this property please contact us.



cubitt&west
Helping you move forwards

Call Emsworth Branch 01243 377888 ■ cubittandwest.co.uk



■ Legal advice should be taken to verify fixtures/fittings, planning, alterations and/or lease details ■ Appliances & services are untested, dimensions are approximate and floor plans are not to scale



44608127/20260209/SR/KC