



Mccall Close, SW4
£700,000

Dexters



McCall Close, SW4

Tucked away on a quiet residential close, this well presented home offers great value. The property comprises two generous reception rooms, providing excellent space for both entertaining and everyday living, along with a well appointed kitchen offering ample storage and workspace. To the rear, a bright conservatory adds further living space and overlooks the garden. Upstairs, the property features three well proportioned double bedrooms, alongside a family bathroom. Externally, the property enjoys a peaceful setting within the close benefiting from estate parking.

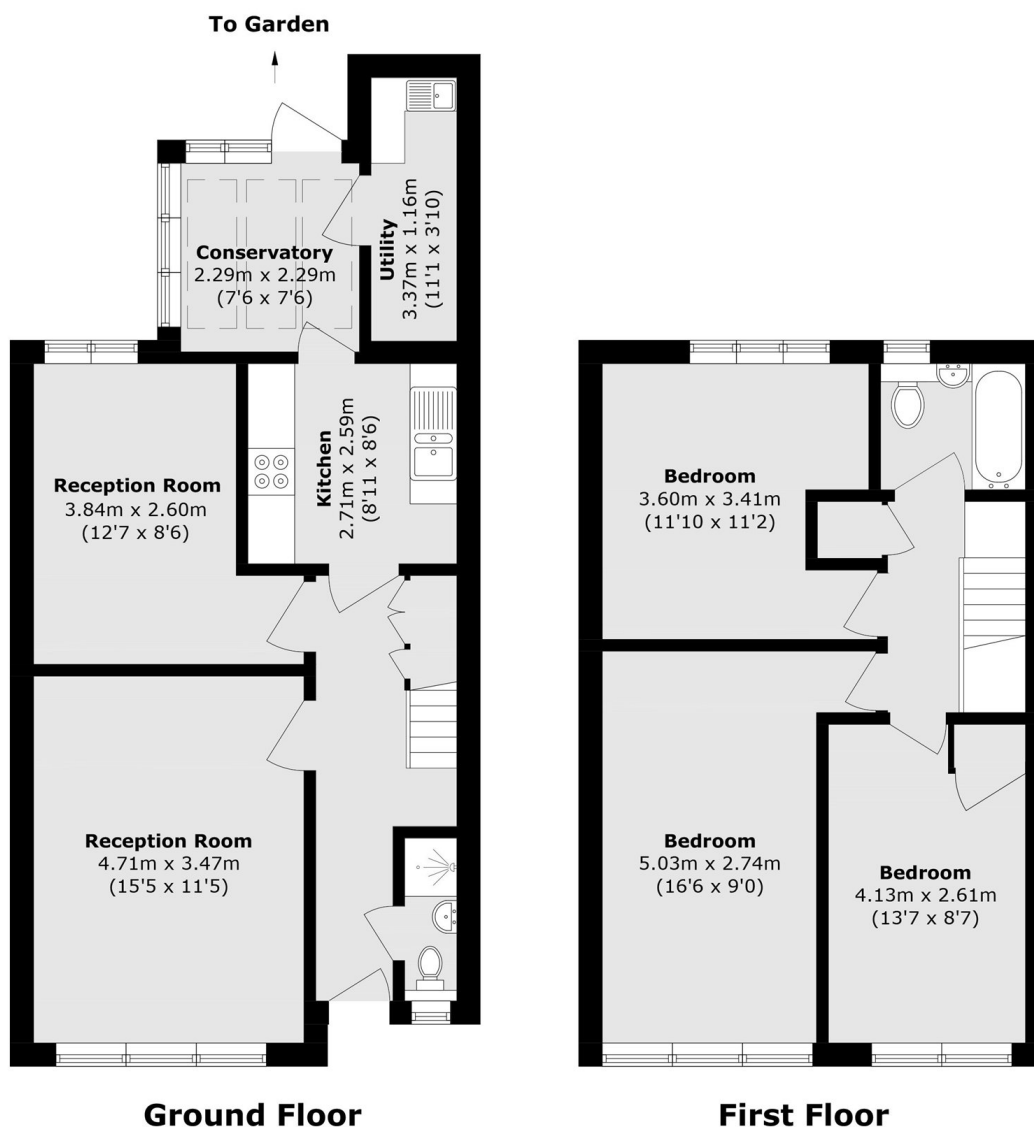
McCall Close is superbly located for the amenities of Clapham High Street, with its array of shops, cafés, and restaurants, while excellent transport links are nearby, including Stockwell Underground (Victoria Line), Clapham North Underground (Northern Line) and Clapham High Street Overground, providing easy access into Central London and beyond.

Features

- Chain Free
- Two Bathrooms
- Freehold
- Two Reception Rooms
- Private Garden
- Three Double Bedrooms



Mccall Close, London, SW4



Total area (approx.): 103.9 sq. m (1118.3 sq. ft)