



Devonhurst Place, Chiswick, W4 4JB

Guide Price £775,000

WHITMAN & CO.

SALES · LETTINGS · COMMERCIAL

- Historic Army and Navy warehouse conversion
- Two beds/two baths
- Dual aspect reception room with Juliet balconies
- Secure underground parking
- Gated development with porter
- No onward chain

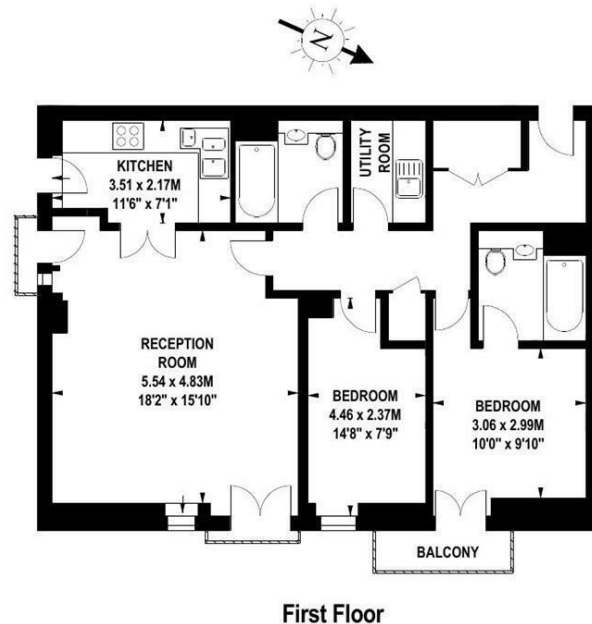
Tenure - Leasehold with Share of Freehold
 Lease length - 960 years remaining
 Ground rent - Peppercorn
 Service charge - £6616 pa
 Local authority - Hounslow
 Council tax - Band F

THE PROPERTY

A rarely available two-bedroomed apartment situated within this historic Army and Navy storage warehouse in the very centre of Chiswick, with the extensive boutique shopping and restaurant facilities of Chiswick's main high road a short walk away. The property benefits from a secure gated environment with covered allocated parking. The accommodation provides a spacious open plan living area with a galley style fitted kitchen and dual aspect with two Juliet balconies, two double bedrooms, one with a further balcony, main bathroom and further en-suite to the primary bedroom, utility room, extensive storage, secure parking, portorage, communal gardens and roof terrace, and architecturally designed internal common areas. Local transport links include Turnham Green and Chiswick Park tube stations, numerous local bus routes with convenient vehicular access via the A4/M4 to central London, Heathrow and the West. No onward chain.

Devonhurst Place, W4

Approximate gross internal area
 81.94 sq m / 882 sq ft



First Floor

The floor plan is not to scale and measurements and areas shown are approximate and therefore should be used for illustrative purposes only. The plan has been prepared in accordance with the RICS code of Measuring Practice and whilst we have confidence in the information produced, it must not be relied on. If there is any aspect of particular importance, you should carry out or commission your own inspection of the property.
 Copyright of FeaturePRO.

SITUATION



5-7 Turnham Green Terrace, Chiswick, London, W4 1RG

Tel 020 8747 8800

E-mail sales@whitmanandco.com

Website www.whitmanandco.com

