

abbotFox

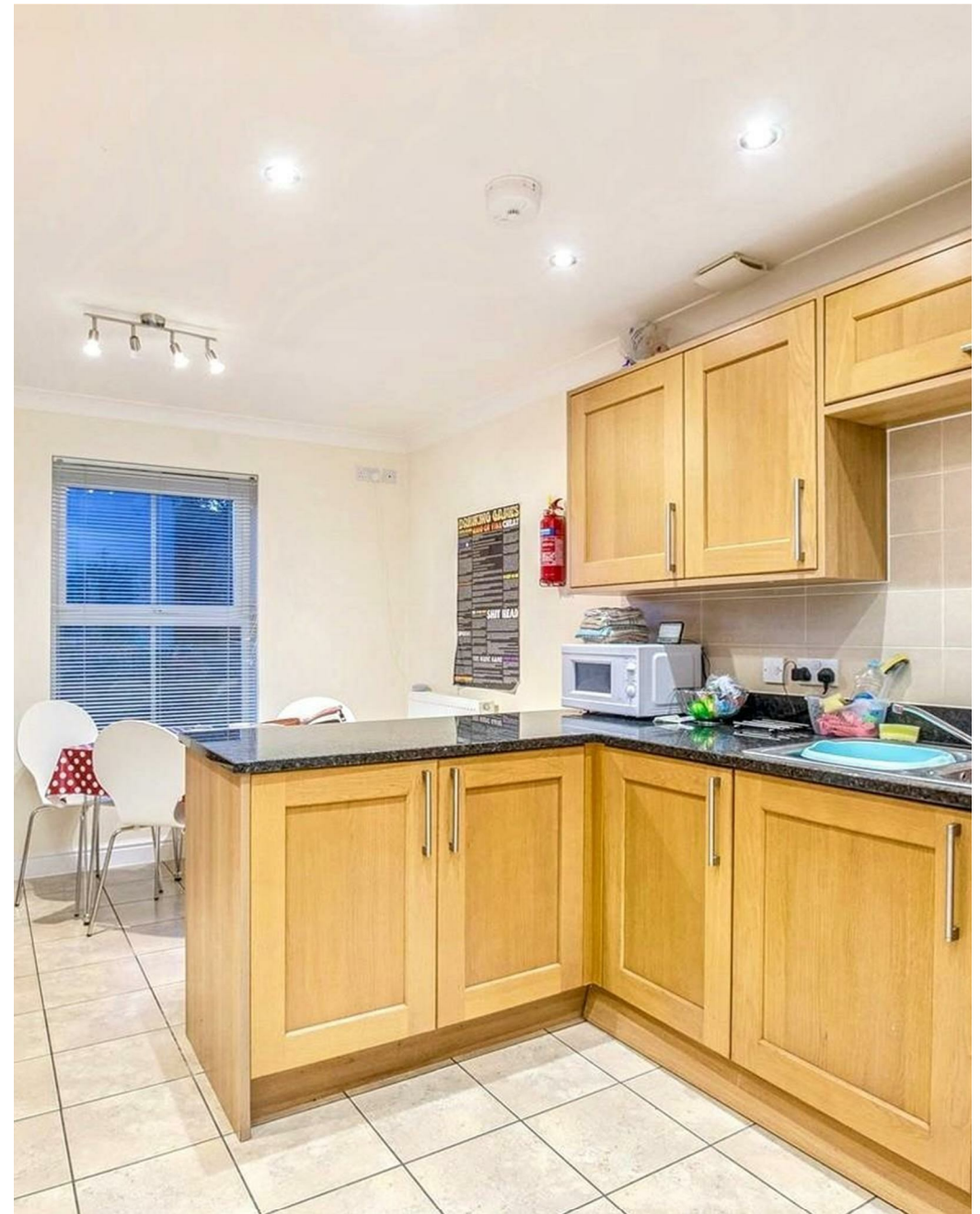


Earles Gardens, Norwich
£2,000 PCM

“

We are a team of genuine individuals who hold a deep passion for both property and marketing. Collectively, we bring over 70 years of experience in the property market of Norfolk and Suffolk. Our affection for both counties runs deep, and we are enthusiastic about sharing our passion with you.

Colin McKenzie | **Branch Partner**







THE DETAIL _____

Nestled in the charming area of Earles Gardens, Norwich, this impressive house offers a perfect blend of space and comfort, ideal for families or those seeking a generous living environment. With six well-proportioned bedrooms, there is ample room for everyone, ensuring privacy and personal space for all family members or guests.

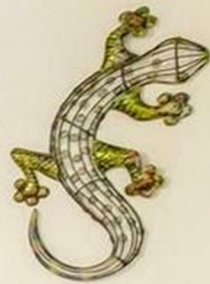
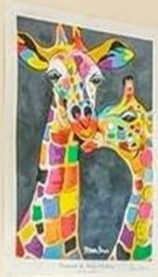
The property boasts a welcoming reception room, perfect for entertaining or relaxing after a long day. The layout is thoughtfully designed, allowing for a seamless flow between the living areas, making it an excellent choice for both social gatherings and quiet evenings at home.

With three bathrooms, morning routines will be a breeze, providing convenience and reducing the usual hustle and bustle associated with larger households. Each bathroom is designed with functionality in mind, ensuring that comfort is never compromised.

Situated in a desirable location, this house is not only a home but also a gateway to the vibrant culture and amenities that Norwich has to offer. From local shops and restaurants to parks and schools, everything you need is within easy reach.

This property presents a wonderful opportunity for those looking to settle in a spacious and well-appointed home in a sought-after area. Whether you are a growing family or simply in need of more space, this house in Earles Gardens is sure to meet your needs and exceed your expectations.







THE HIGHLIGHTS _____

- 6 Bedroom House
- 2026/2027 Student let
- Brilliant location
- Large Rooms
- Garden
- Flexible move in date

Let's talk

01603 660000

sales@abbotfox.co.uk

[@abbotfox](#)

EPC RATING -

Disclaimer – In accordance with the Property Misdescriptions Act, the company abbotFox gives notice that all descriptions, references to condition, necessary permissions for use and other details are given in good faith and believed to be correct, but any purchaser should not rely on them as statements of fact, and must satisfy themselves by inspection or other means, as to their accuracy.