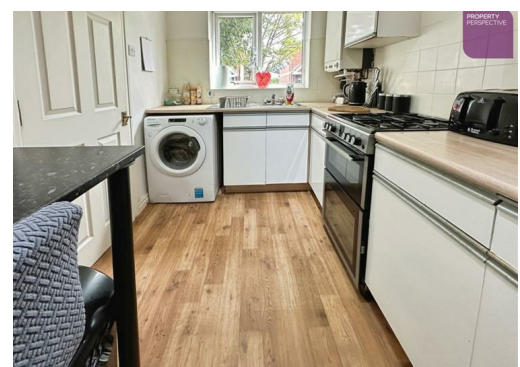




Whitethorne Mews, Lytham St. Annes, FY8 3XE

£130,000

ATTENTION ALL FIRST TIME BUYERS & INVESTORS!!! We are delighted to be able to present to you this beautifully presented and maintained 2 bedroom semi-detached house, situated in Lytham St Annes!



4 Whitethorne Mews, Lytham St. Annes, FY8 3XE

Whitethorne Mews, FY8 Guide Price
£130,000

separate garden area to the side of the property.

A well-presented two-bedroom semi-detached house available for sale. Constructed between 1980 and 2000, this property offers a practical and comfortable living space comprising one reception room and one bathroom. Ideal for first-time buyers or investors, the home benefits from a convenient layout and a sought-after location. Early viewing is highly recommended to appreciate the potential this property offers.

GROUND FLOOR

Lounge 10'5" x 14'6" (3.18m x 4.44m)

High quality wood effect laminate flooring with staircase leading to the first floor and curtains

Kitchen 6'10" x 11'2" (2.10m x 3.41m)

High quality vinyl flooring with blind. A range of fitted kitchen units, worktops and space for free-standing kitchen appliances

FIRST FLOOR

Bedroom 12'0" x 8'2" (3.68m x 2.51m)

High quality wood effect laminate flooring with window to the side elevation and curtains

Bedroom 6'0" x 9'1" (1.84m x 2.77m)

High quality wood effect laminate flooring with window to the front elevation and curtains

Bathroom

High gloss tile flooring with 2 piece bathroom suite in white, separate showering enclosure, heated towel rail and spotlighting

EXTERNAL

Allocated car parking space. Enclosed





