

# The Hansom Building, 4, Bridge

London • • SW1V 1AF  
Per Month: £3,200 Per Month



coopers  
est 1986

# The Hansom Building, 4, Bridge

London • • SW1V 1AF

Coopers are excited to present this spacious two bedroom flat in the heart of London Victoria, Westminster.

This high specification apartment comprises two double bedrooms, an open-plan kitchen living room and two bathrooms with marble tiling. The apartment further benefits from secure parking and a day concierge service. The apartment sits in a development located approximately 0.1 miles from London Victoria Station (Victoria line, Circle line, District line, Network Rail, Coach).

This prime location is close to the distinguished areas of Belgravia and Mayfair which embrace various eateries and boutiques, and also to the green spaces of St. James's Park, Hyde Park and Green Park.

Allocated parking available via separate negotiation.

Available Early March

Spacious double bedrooms

Close to transport links

Private Balcony

Modern, high spec finish

Allocated parking via separate negotiation

---

---

---

These particulars are intended as a guide and must not be relied upon as statements of fact. Your attention is drawn to the Important Notice on the last page.









### Schools:

Coopers are excited to present this spacious two bedroom flat in the heart of London Victoria, Westminster.



### Train:



### Car:

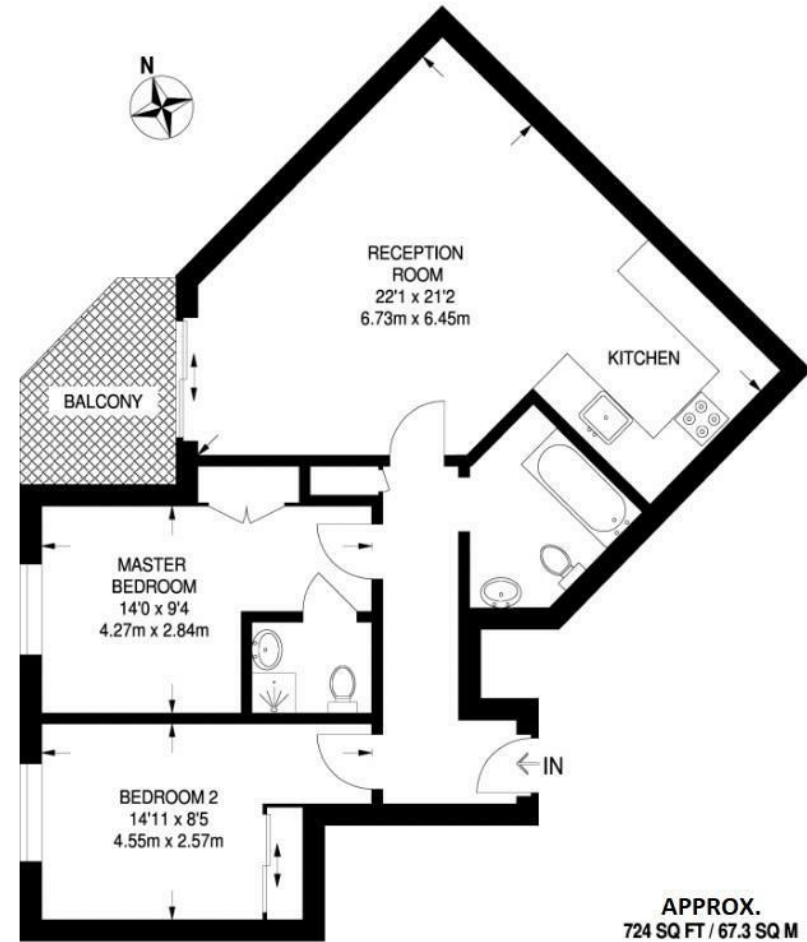
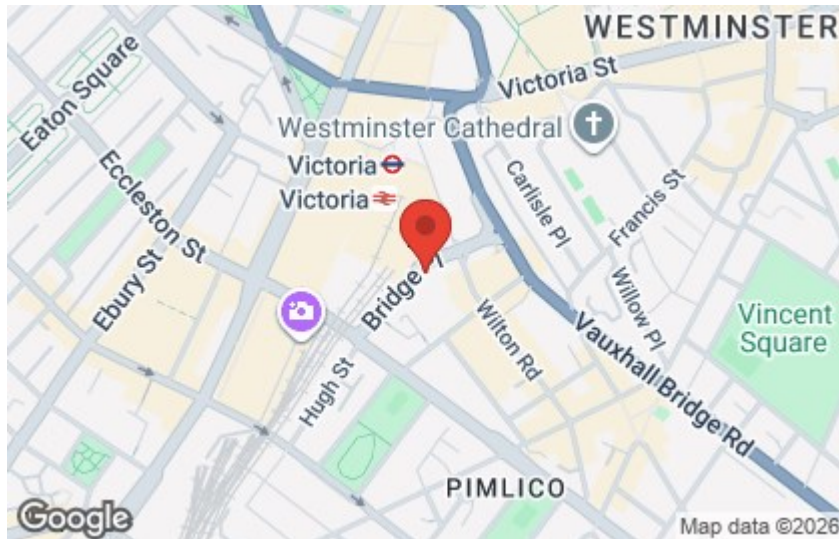
M4, A40, M25, M40



### Council Tax Band:

F

(Distances are straight line measurements from centre of postcode)



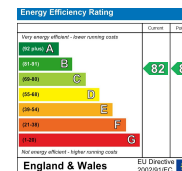
**coopers**  
est 1986

**0207 580 9658**

**22 Cleveland Street, Fitzrovia,  
London, W1T 4JB**

[info@coopersonlondon.co.uk](mailto:info@coopersonlondon.co.uk)

**CoopersResidential.co.uk**



Important Notice: These particulars, whilst believed to be accurate are set out as a general outline only for guidance and do not constitute any part of an offer or contract. Intending purchasers should not rely on them as statements or representation of fact, but must satisfy themselves by inspection or otherwise has the authority to make or give any representation or warranty in respect of the property.