



SAMUEL WOOD

4A Church Street, Bishops Castle, SY9 5AA

Offers In The Region Of £260,000



4A Church Street

Bishops Castle, SY9 5AA



- Fantastic Character Filled Property
- Large Living Space
- Popular Village Location
- Leisure Facilities nearby
- EPC Band E
- 3 Double Bedrooms
- Superb Cellar
- Close to Good Schooling
- On Street Parking
- NO ONWARD CHAIN

Located in the charming market town of Bishops Castle, this delightful end terrace house on Church Street boasts a striking exterior, adorned with vibrant purple paint and an artistically painted Zip that sets it apart from its neighbour. This three-bedroom property offers a unique blend of character and modern living, making it an ideal family home.

Upon entering, you are greeted by a spacious lobby area, perfect for storing shoes and coats, which currently accommodates a comfortable sofa. The expansive lounge and dining area provide a versatile space for relaxation and entertaining, seamlessly leading into a fully equipped kitchen. The kitchen features a generous pantry cupboard, conveniently located above the stairs that descend to the cellar.

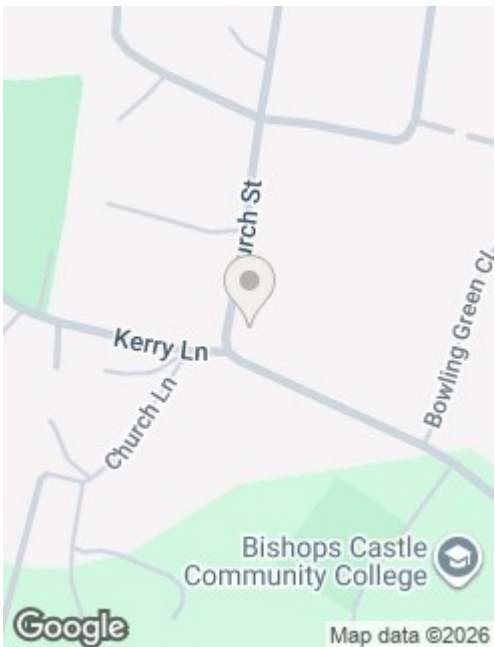
The cellar is a standout feature of this home, rich in character and brimming with potential. It can serve as a utility room, complete with a sink and housing the boiler, or be transformed into a creative studio for arts and crafts, a music hobby room, or any number of personal projects. Additionally, a door from the cellar grants access to the rear courtyard, which, while not owned, can be used for bin disposal and rear entry.

Venturing upstairs, you will find three double bedrooms, each filled with natural light and adorned with charming beams. A spacious shower room caters perfectly to family needs, while a rear landing area offers extra storage or a quiet nook for studying.

With on-street parking available without the need for a permit, this property presents an excellent opportunity for those seeking a home with ample potential. Recently fitted with brand new carpets and freshly painted throughout, this residence is well worth a visit. Embrace the charm and possibilities that await in this lovely Bishops Castle home. With the benefit of no onward chain, please contact the Craven Arms office to secure your viewing!







Directions

Please use the what 3 words app to locate the property quoting [///flesh.admiral.unwound](http://flesh.admiral.unwound) This will take you directly outside the property.

Services: We understand that the property has oil fired central heating, mains electric, mains water and mains drainage. EPC Band E.

Broadband Speed: Basic 19 Mbps and Superfast 80 Mbps

Flood Risk: Very Low.

Tenure: Freehold

Local Authority: Shropshire Council, The Shirehall, Abbey Foregate, Shrewsbury, Shropshire SY2 6ND. Tel 0345 678 9000

Council Tax Band: B

Mortgage Services: We offer a no obligation mortgage service through Hilltop Mortgage Solutions. Please ask a member of our team for further details.

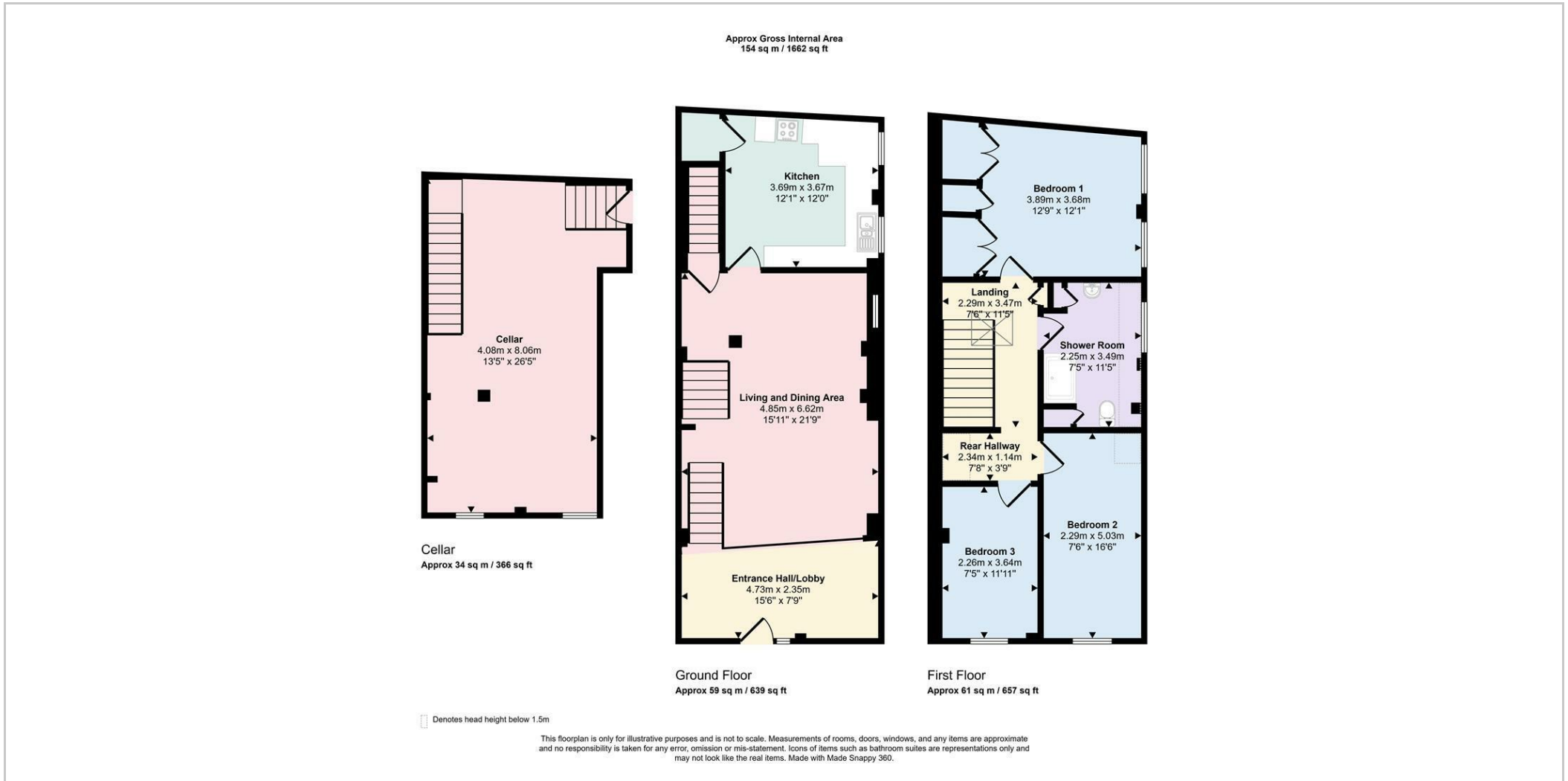
Referral Services: Samuel Wood routinely refers vendors and purchasers to providers of conveyancing and financial services. We may receive fees from them as declared in our Referral Fees Disclosure Form.

Anti-Money Laundering: To comply with these regulations, we are required to complete Anti-Money Laundering (AML) checks for all purchasers. We use Movebutler, a secure HMRC-approved platform by Credas, to make this process quick and easy on any device. A charge of £25pp will be collected by Movebutler, a link will be emailed to you when your offer has been accepted.

Viewings: Strictly by appointment only, please contact the craven arms office on 01588 672728 or email cravenarms@samuelwood.co.uk. For out of hours enquiries please contact Vicki Oldhams on 07396 879139.







We take every care in preparing our sales details. They are checked and usually verified by the Vendor. We do not guarantee appliances, alarms, electrical fittings, plumbing, showers etc. You must satisfy yourself that they operate correctly. Room sizes are approximate; they are usually taken in metric and converted to imperial. Do not use them to buy carpets or furniture. We cannot verify the tenure, as we do not have access to the legal title; we cannot guarantee boundaries or rights of way so you must take the advice of your legal representative. No person in the employment of or representing Samuel Wood has any authority to make any representation or warranty whatever in relation to this property. If there is any point which is of particular importance to you, please contact the office and we will be pleased to check the information. Do so particularly if contemplating travelling some distance to view. Applicants are advised that the majority of our shots are taken with a wide angle lens.

CONTEMPORARY AGENCY • TRADITIONAL VALUES
10 Corvedale Road, Craven Arms, Shropshire, SY7 9ND
Tel: 01588 672728 | cravenarms@samuelwood.co.uk