



## Abbey Street, SE16

£365,000

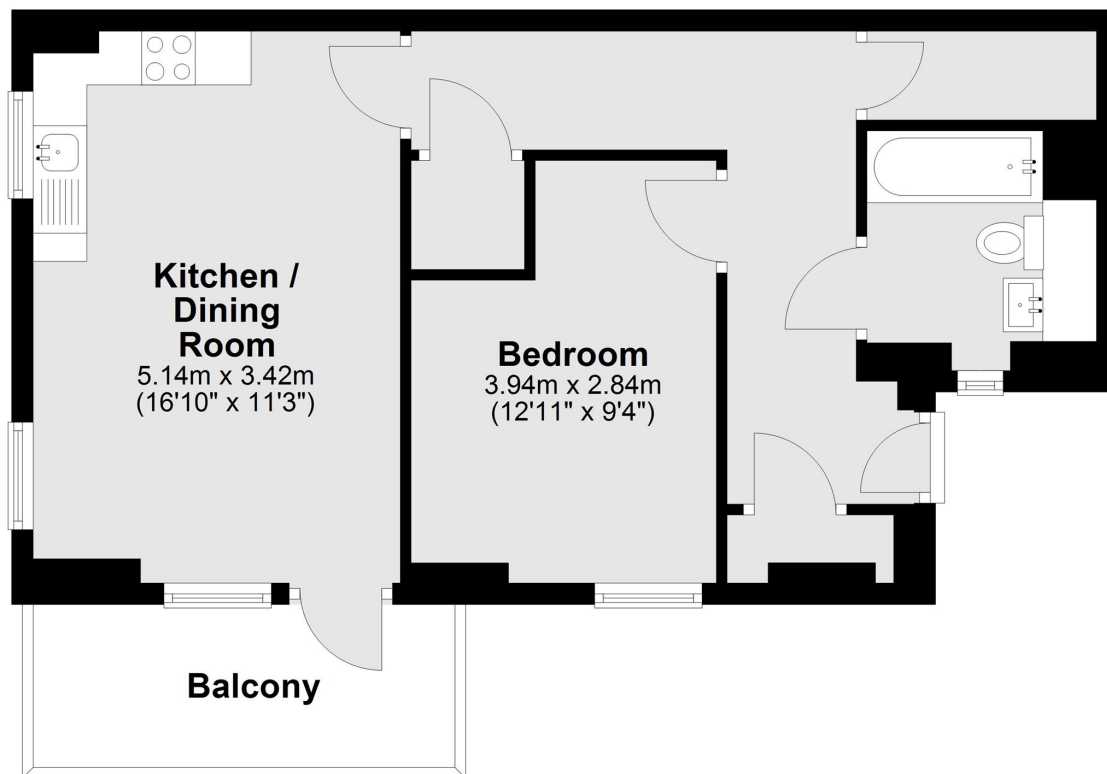
Situated moments from Bermondsey station, this one double bedroom flat is in fantastic condition and has a large open plan kitchen living space, modern bathroom, private balcony and is being sold chain free.

Pitman Building is 0.1 miles from Bermondsey station offering excellent transport links to all of London. Maltby Street Market, Bermondsey Street, Shad Thames and London Bridge are also close by.

### Features

- One Double Bedroom
- Private Balcony
- Fantastic Condition
- Modern Development
- Long Lease
- Excellent Location
- Secure Bike Storage

# Abbey Street, London, SE16



Main area: Approx. 47.5 sq. metres (511.6 sq. feet)  
Plus balconies, approx. 6.3 sq. metres (68.4 sq. feet)