

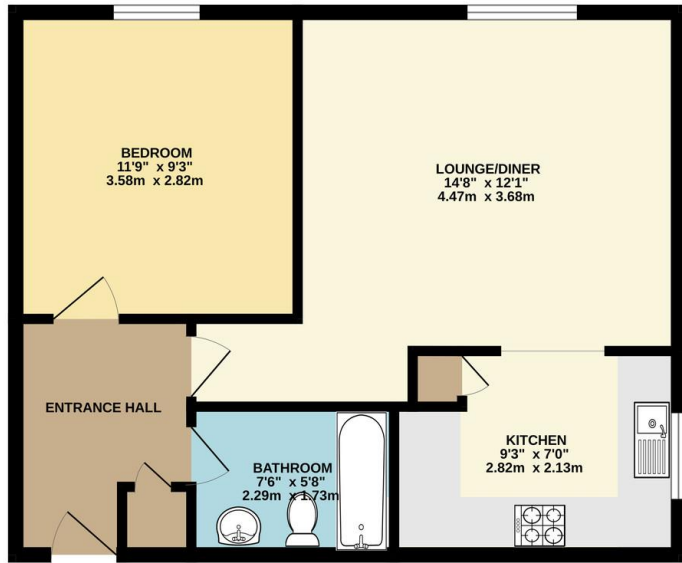


Steven Oates are pleased to offer for rental this spacious, newly decorated, one bedroom apartment, situated only a short distance to both Hertford Town Centre and Hertford East station.

The property benefits from one allocated parking space and is unfurnished, available now.



GROUND FLOOR
473 sq.ft. (43.9 sq.m.) approx.



Score	Energy rating	Current	Potential
92+	A		
81-91	B	83 B	84 B
69-80	C		
55-68	D		
39-54	E		
21-38	F		
1-20	G		

TOTAL FLOOR AREA - 473 sq.ft. (43.9 sq.m.) approx.
Whilst every attempt has been made to ensure the accuracy of the floorplan contained herein, measurements of doors, windows, rooms and any other items are approximate and no responsibility is taken for any error, omission or mis-statement. This plan is for illustrative purposes only and should be used as such for any prospective purchaser. The services, systems and appliances shown have not been tested and no guarantee as to their operability or efficiency can be given.
Made with LettingX 02/23





Whilst we endeavour to make our sales particulars fair, accurate and reliable, they are only intended as a general guide to the property. Measurements and distances are approximate. These particulars do not form part of any offer or contract. If there are important matters that are likely to affect your decision to buy, please contact us before viewing the property. Please note that we have not tested the services, equipment or appliances in this property, accordingly, we advise prospective buyers to commission their own survey or service reports before finalising any offer to purchase.