



Gloucester Place, W1U

£3,358 Per week

This one bedroom apartment is on the ground floor of a Georgian conversion on Gloucester Place, close to Marylebone High Street. The property has high ceilings, large reception, separate kitchen and bathroom.

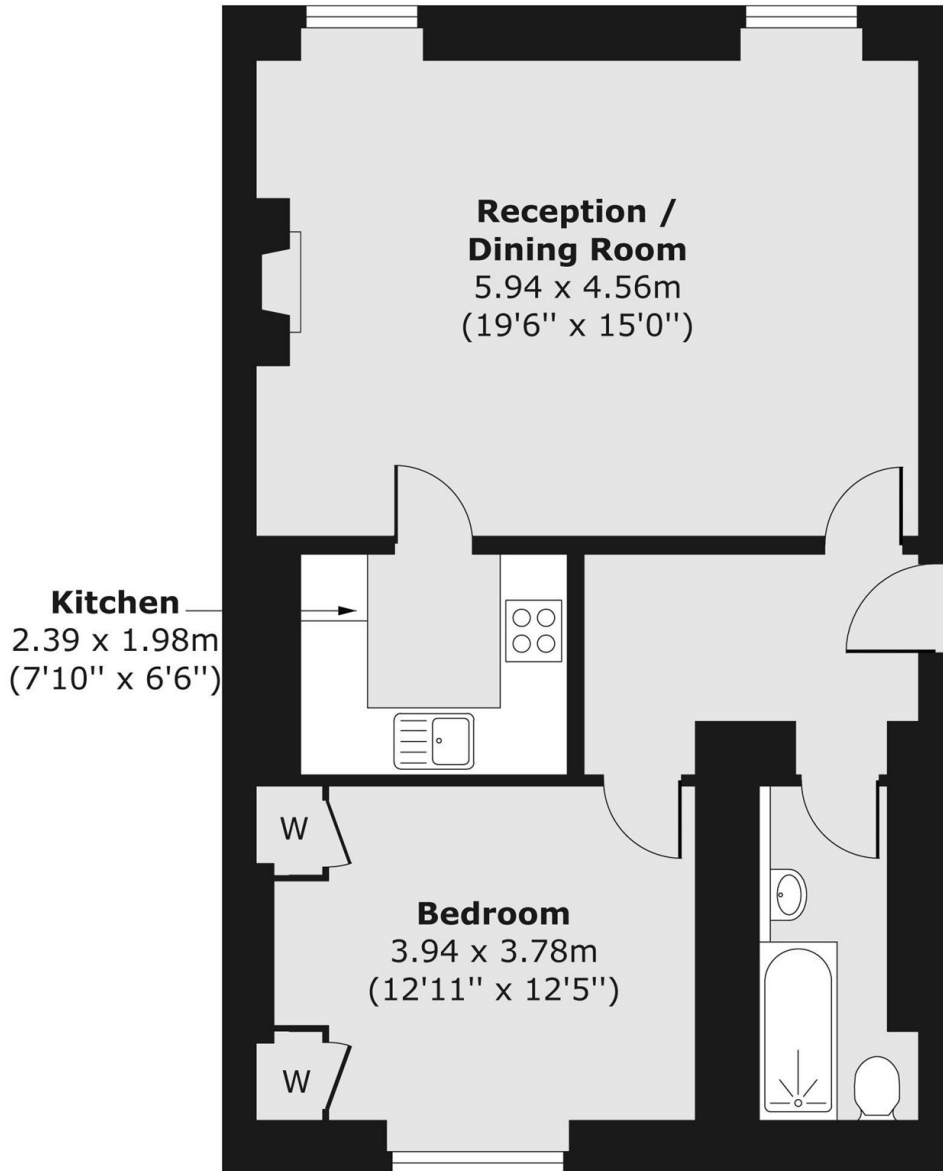
Gloucester Place is just north of Dorset Square and is close to the cafe's, shops and restaurants of Baker Street, as well as the fashionable Marylebone High Street.

Features

- Ground Floor
- Georgian Conversion
- One Bedroom
- One Bathroom
- Unfurnished
- The Portman Estate

Gloucester Place,
London, W1U

Ground Floor



Total area (approx.) 57.58 sq. m (620 sq. ft)