



## TURNPIN LANE, SE10

£2,250 per month

Maisonette  
Duplex apartment  
Two bedrooms  
Open plan kitchen  
Great location  
Energy rating: d

@marshandparsons  
marshandparsons.co.uk

MARSH &  
PARSONS



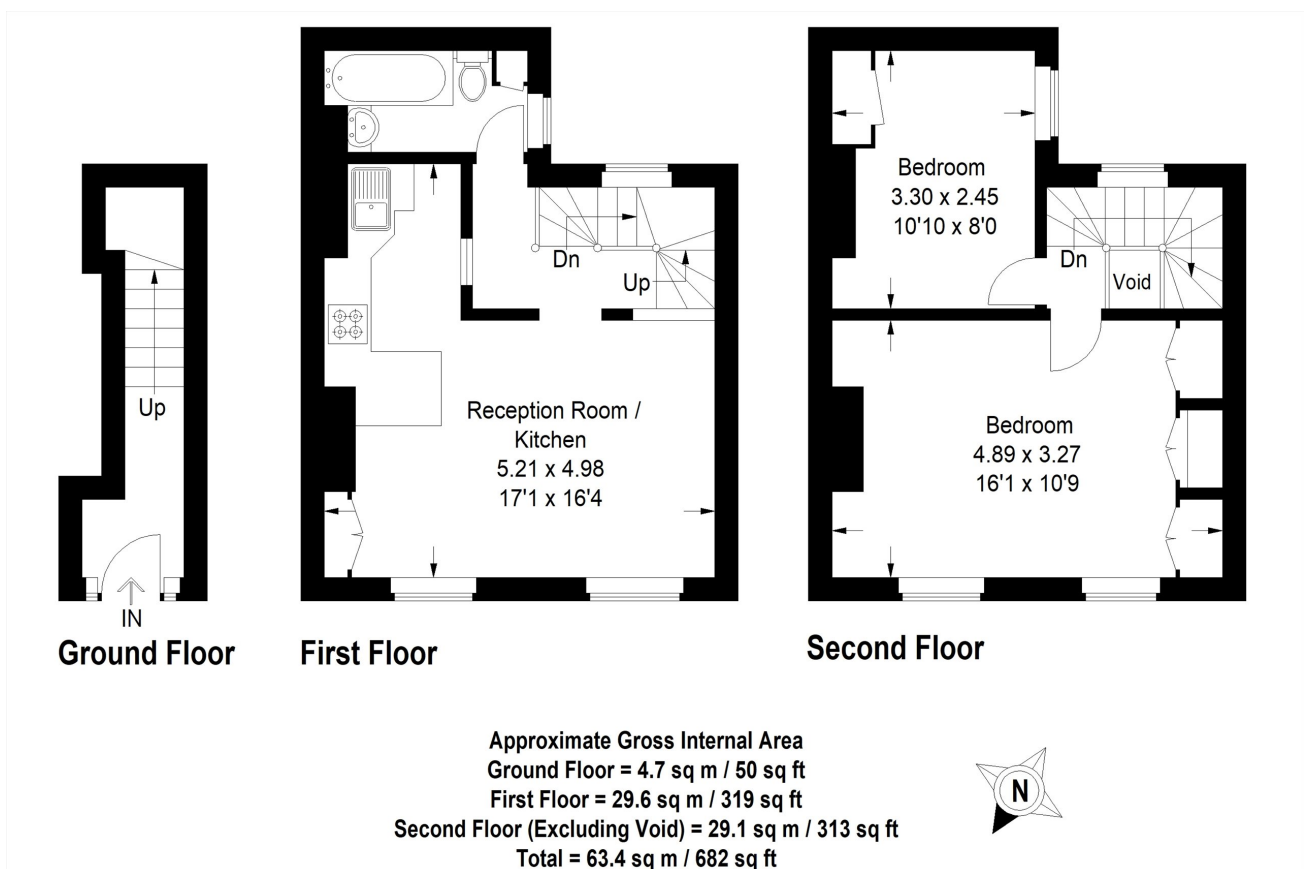
# ABOUT THE PROPERTY

A spacious duplex conversion flat, situated just off Greenwich market, a rare and exciting place to live. The property is a maisonette featuring its own front door. The interior comprises two double bedrooms, a modern bathroom suite with fitted shower, spacious open plan lounge/diner which includes all main appliances.

Ideally located in the centre of Greenwich with everything it has to offer on the doorstep of this property. Cutty Sark DLR station is just across the road from this location.



# STEP INSIDE TURNPIN LANE



Greenwich  
020 8815 2230

Energy Rating: D We aim to make our particulars both accurate and reliable. However, they are not guaranteed; nor do they form part of an offer or contract. If you require clarification on any points then please contact us, especially if you're traveling some distance to view. Please note that appliances and heating systems have not been tested and therefore no warranties can be given as to their good working order

MARSH &  
PARSONS