



King & Queen Wharf, SE16

£2,800 Per calendar month

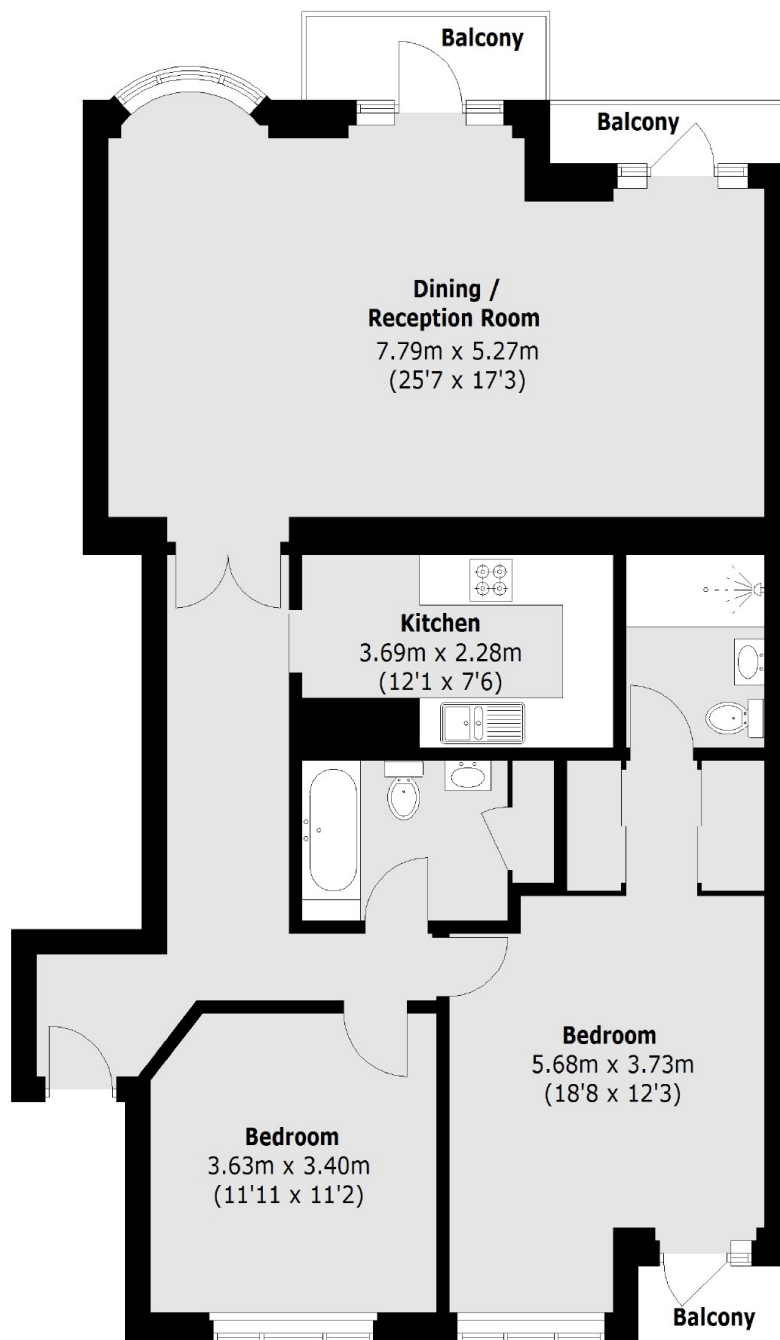
A spacious two double bedroom property in Rotherhithe. The property faces onto the river with stunning views, enjoyed from a large private balcony. There is 24 hour concierge, a swimming pool and the development is completely gated.

Hampton Court is a private development overlooking The River Thames. Surrey Quays Shopping Centre has numerous retail outlets, and there are good bus and underground links close by.

Features

- Two Double Bedrooms
- Two Bathrooms
- Three Balconies
- Gym & Concierge
- River Views
- Rotherhithe

King & Queen Wharf, London, SE16



Total area (approx.): 104.03 sq. m (1119.7 Sq. ft)

Balconies: 6.4 sq. m (68.8 Sq. ft)

Dexters

Canada Water
Montreal House
Surrey Quays Road
London

Lettings
020 7650 5145

Energy Rating: C. We aim to make our particulars both accurate and reliable. However they are not guaranteed; nor do they form part of an offer or contract. If you require clarification on any points then please contact us, especially if you're traveling some distance to view. Please note that appliances and heating systems have not been tested and therefore no warranties can be given as to their good working order.

 **RICS** | Regulated
Estate Agent
and Letting Agent

dexters.co.uk