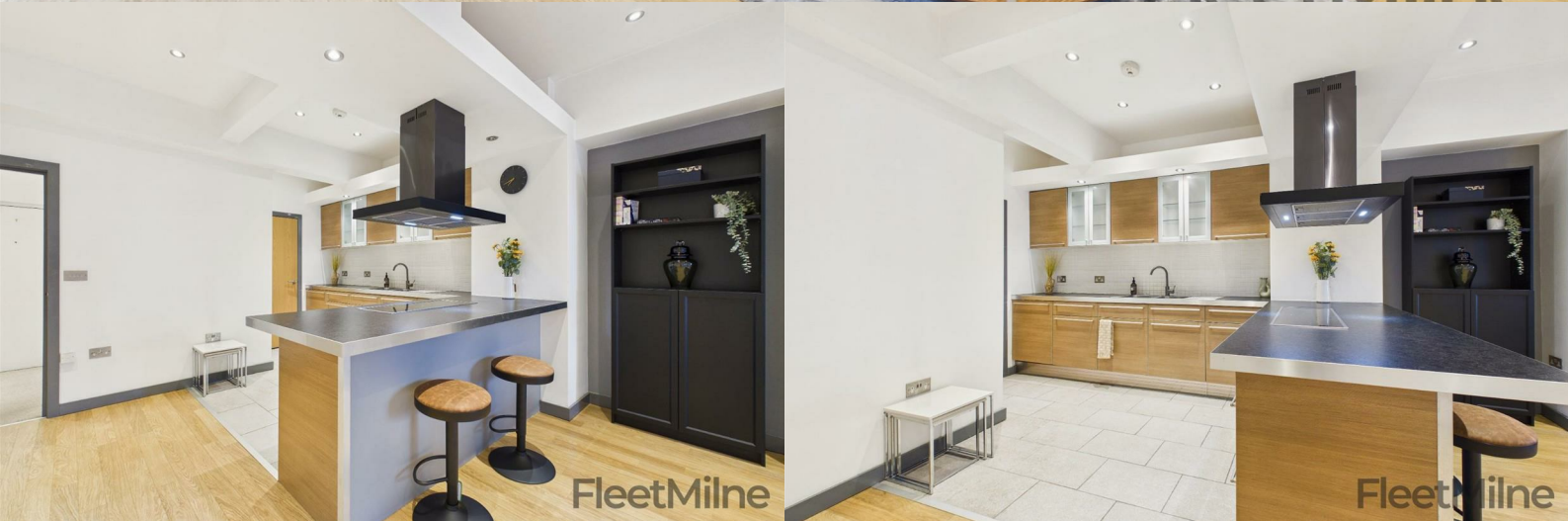




BUY ME



Wexler Lofts, 100 Carver Street, B1 3AQ

£260,000

1

- A unique duplex apartment offering around 965sqft of internal living space!
- Two bedrooms, both with large, fitted wardrobes
- Two bathrooms, ensuite with large shower, and then a main bathroom with bath perfect for soaking
- Large kitchen with island and utility, with updated appliances
- A secure and allocated parking space included with the property in the underground car park
- An extremely popular converted development in the Jewellery Quarter, offering completely unique layouts
- Well-looked after throughout, with bespoke window treatments and could be made available with furniture included (at an additional cost), making this move-in ready
- Prime Jewellery Quarter location, just 0.4 miles walk to St Paul's Square
- Fantastic transport links, just 0.4 miles to the Jewellery Quarter Station and Metro, whilst just 0.8 miles to New Street Station, both with direct links to London
- 0.7 miles to Colmore Row and the Birmingham Business District, home to many professional businesses



fleetmilne.co.uk

0121 366 0456

FleetMilne