



Guide Price
£650,000

Freehold

3x  1x  2x 

**Horsham Road,
Cranleigh, Surrey, GU6**

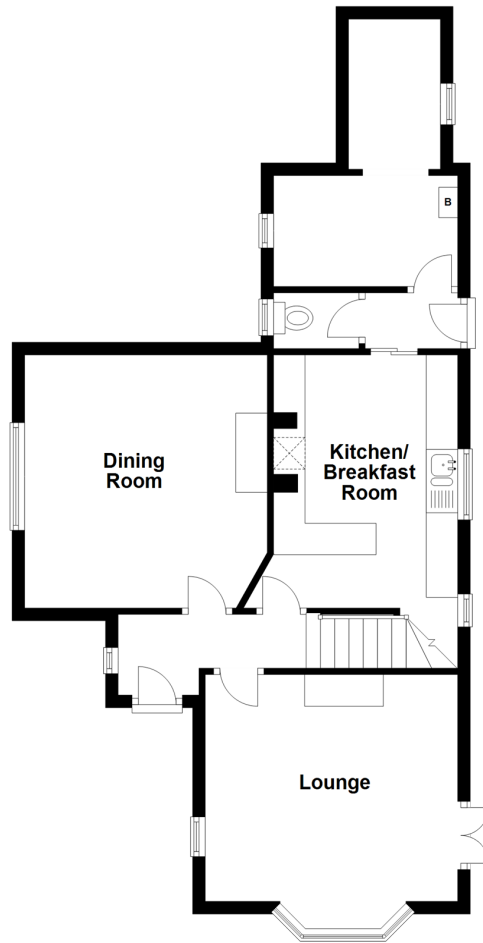
OVER 60?

Secure this property
for up to **59% less!**

cubitt & west
Helping you move forwards

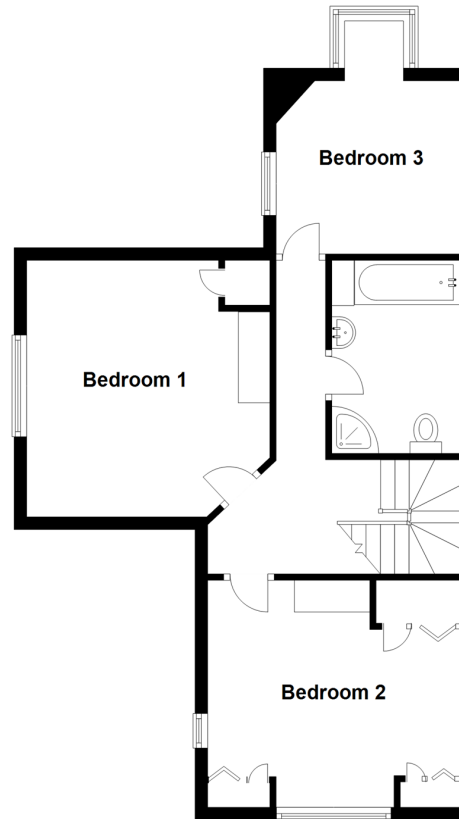
Ground Floor

Approx. 61.1 sq. metres (657.4 sq. feet)



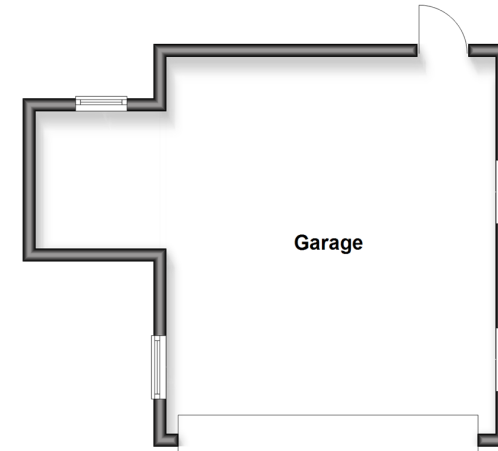
First Floor

Approx. 55.2 sq. metres (594.1 sq. feet)



Outbuilding

Approx. 35.7 sq. metres (383.8 sq. feet)



Accommodation

GROUND FLOOR

Entrance Hall

Lounge: 13'1 x 11'6 (3.99m x 3.51m)

Dining Room: 13'1 x 12'6 (3.99m x 3.81m)

Kitchen/Breakfast Room: 13'8 x 9'6 (4.17m x 2.90m)

Cloakroom

FIRST FLOOR

Landing

Bedroom 1: 13'0 x 12'6 (3.97m x 3.81m)

Bedroom 2: 13'2 x 11'1 (4.02m x 3.38m)

Bedroom 3: 9'5 x 8'9 (2.87m x 2.67m)

Bathroom

OUTBUILDING

Double Garage

OUTSIDE

Driveway

Gardens



Main features

- Three bedroom character detached house
- Two separate reception rooms
- Upstairs bathroom, downstairs cloakroom & utility room
- Double garage & manageable gardens
- Close to Cranleigh High Street and local schools



Nearest Schools

Primary Schools: St Cuthbert Mayne Catholic 0.3 miles, Cranleigh C of E 0.4 miles, Park Mead 0.5 miles

Secondary Schools: Glebelands 0.4 miles, Cranleigh School 1.0 miles



Transport Information

Train Stations: Gomshall 5.4 miles, Shalford 6 miles, Guildford 8 miles



Address

Horsham Road, Cranleigh, Surrey, GU6



Directions

For directions to this property please contact us.



cubitt&west
Helping you move forwards

Call Cranleigh Branch 01483 271567 ■ cubittandwest.co.uk



- Legal advice should be taken to verify fixtures/fittings, planning, alterations and/or lease details
- Appliances & services are untested, dimensions are approximate and floor plans are not to scale
- Through a Homewise Home For Life Plan people aged 60+ can secure this property for up to 59% less, by purchasing a Lifetime Lease



20306850/20260227/CH/RW