



## Montclare Street, E2

£650,000

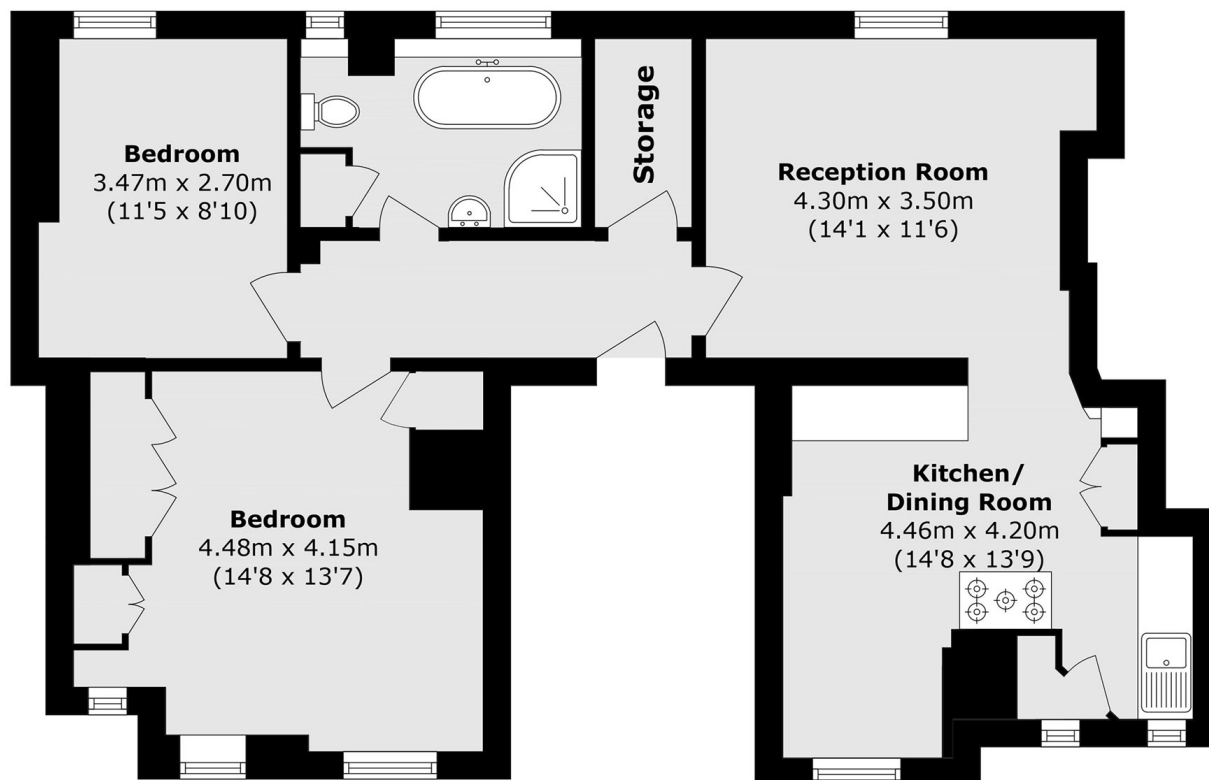
Spacious two bedroom apartment in the sought after Arnold Circus development. The property has a large living room which leads into the semi-separate fully integrated dine-in kitchen. The apartment has two spacious double bedrooms, the principle bedroom has ample inbuilt storage. There is plenty of storage in the hall along with the modernised bathroom.

Set in the heart of Shoreditch, Walton House is moments from the eclectic mix of boutiques, cafes and galleries this area has to offer. Redchurch Street, Boxpark, and restaurants such as Dishoom and the Michelin star Brat are all nearby. The convenient transport links of Liverpool Street, Old Street and Shoreditch High Street all just a short walk away, ensuring connections via Underground, Overground and National Rail to all corners of the city.

### Features

- Grade II Listed Building
- Boundary Estate
- Two Double Bedrooms
- Secure Entry
- Bright interiors

Montclare Street,  
London, E2



Total area (approx.): 73.6 sq. m (792.2 sq. ft)