



Church Meadow

Surbiton, KT6 5EW

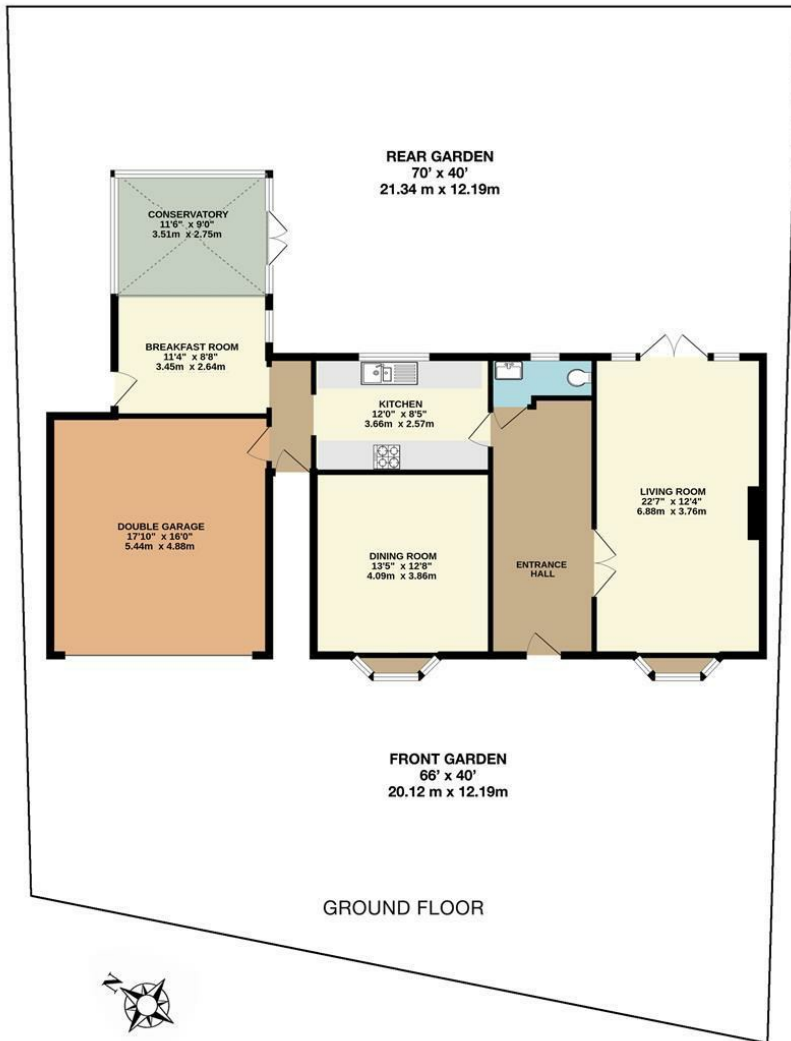
Guide Price

£1,100,000

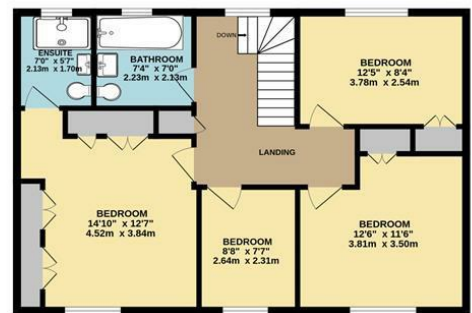
A beautiful four bedroom detached family home nestled in a quiet spur off a highly sought-after residential road. This wonderful property boasts a beautiful frontage with off street parking for several cars. Upon entering there are two reception rooms either side of a large open hallway, one with French doors opening onto the garden and W/C. The kitchen over looks the pretty garden to the rear with an addition of a conservatory and access to the integrated double garage. Upstairs there are four bedrooms, of which the principle bedroom has an en-suite shower room and a family bathroom. Offered to market chain free. Located close by to excellent local schools, walking distance to Surbiton town centre and mainline train station as well as easy access to the A3.

- Sought After Residential Location
- Four Bedrooms
- Integral Double Garage
- Pretty Mature Garden
- Chain Free
- Detached
- Two Reception Rooms
- Off-Street Parking for Several Cars
- Two Bathrooms
- Close to Excellent Local Schools

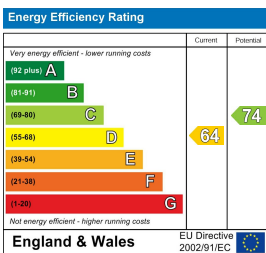
Floor Plan



CHURCH MEADOW,
SURBITON
INTERNAL FLOOR AREA
(APPROX.) 1970 sq ft/ 183.0 sq m



Energy Efficiency Graph



These particulars, whilst believed to be accurate are set out as a general outline only for guidance and do not constitute any part of an offer or contract. Intending purchasers should not rely on them as statements of representation of fact, but must satisfy themselves by inspection or otherwise as to their accuracy. No person in this firm's employment has the authority to make or give any representation or warranty in respect of the property.