



THE LAURELS, STEVENTON

Hampshire RG25 3BB



CHARMING FOUR BEDROOM SEMI DETACHED PERIOD COTTAGE

Period cottage built around 1850 and beautifully presented throughout. Blending characterful features with contemporary finishes, this delightful home offers generous and flexible accommodation ideal for modern family living.



4



2



4

EPC

F

Local Authority: Basingstoke and Deane

Council Tax band: E

Tenure: Freehold

Services: Mains water and electricity. Private drainage. Oil central heating



SITUATED IN THE HEART OF THE VILLAGE OF STEVENTON

The ground floor provides an impressive four reception rooms. The family kitchen is a true focal point of the home, filled with natural light from overhead roof lanterns and offering wonderful views across the garden, with doors leading out to the terrace. A ground floor bedroom and bathroom offer excellent guest accommodation or single level living. Upstairs, the principal bedroom benefits from an en suite shower room, while two further bedrooms are served by a stylish family bathroom. The property benefits from having planning to extend the ground floor to create a larger family kitchen and a principal bedroom on the first floor, ref 23/01471/HSE. Outside, the property is approached via a gravel driveway offering ample parking. To the rear lies a secluded and beautifully tended garden, featuring a lawned area, mature trees and shrubs, and a paved terrace perfect for outdoor dining and entertaining. Additional amenities include a separate home office—ideal for remote working—and a useful garden store.



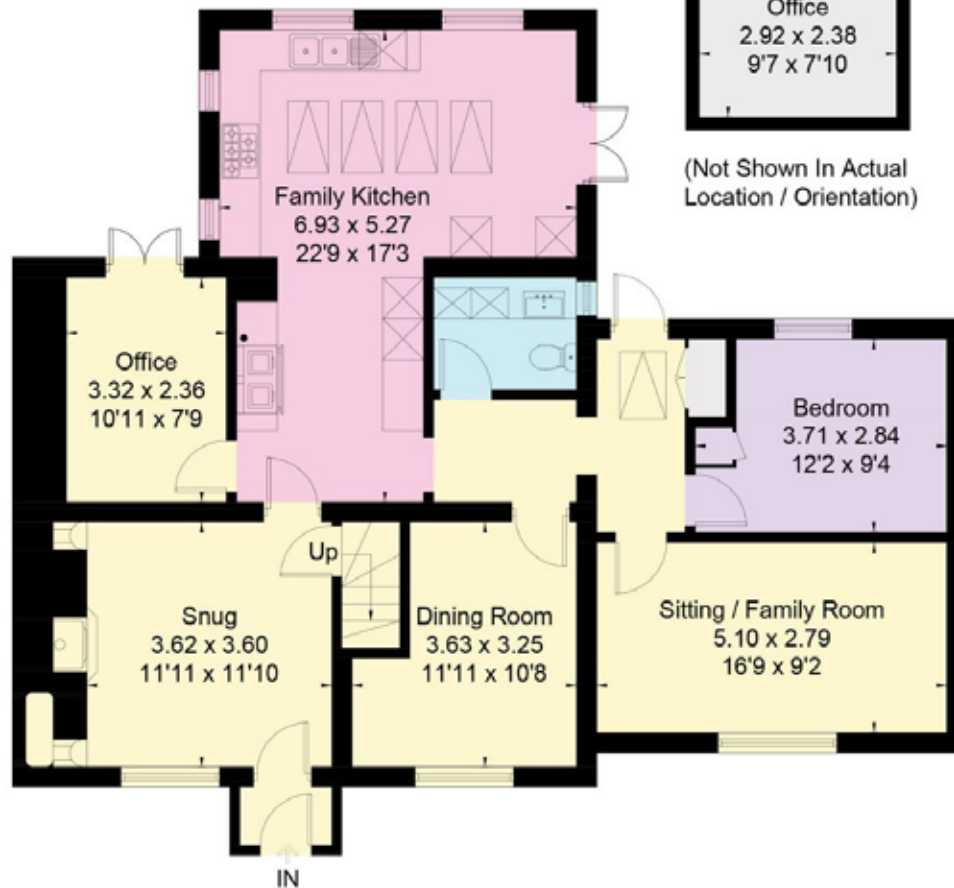




Approximate Floor Area = 169.7 sq m / 1827 sq ft
 Outbuilding = 7.0 sq m / 75 sq ft
 Total = 176.7 sq m / 1902 sq ft (Excluding Shed)



[] = Reduced head height below 1.5m



(Not Shown In Actual Location / Orientation)



This plan is for layout guidance only. Not drawn to scale unless stated. Windows and door openings are approximate. Whilst every care is taken in the preparation of this plan, please check all dimensions, shapes and compass bearings before making any decisions reliant upon them. (ID767266)

We would be delighted
to tell you more.

Clive Moon

01256 350600

clive.moon@knightfrank.com

Knight Frank North Hampshire

Matrix House, Basing View

Basingstoke, RG21 4FF

knightfrank.co.uk

Your partners in property

1. Particulars: These particulars are not an offer or contract, nor part of one. You should not rely on statements given by Knight Frank in the particulars, by word of mouth or in writing ("information") as being factually accurate about the property, its condition or its value. Neither Knight Frank nor any joint agent has any authority to make any representations about the property, and accordingly any information given is entirely without responsibility on the part of Knight Frank. 2. Material Information: Please note that the material information is provided to Knight Frank by third parties and is provided here as a guide only. While Knight Frank has taken steps to verify this information, we advise you to confirm the details of any such material information prior to any offer being submitted. If we are informed of changes to this information by the seller or another third party, we will use reasonable endeavours to update this as soon as practical. 3. Photos, Videos etc: The photographs, property videos and virtual viewings etc. show only certain parts of the property as they appeared at the time they were taken. Areas, measurements and distances given are approximate only. 4. Regulations etc: Any reference to alterations to, or use of, any part of the property does not mean that any necessary planning, building regulations or other consent has been obtained. A buyer must find out by inspection or in other ways that these matters have been properly dealt with and that all information is correct. 5. Fixtures and fittings: A list of the fitted carpets, curtains, light fittings and other items fixed to the property which are included in the sale (or may be available by separate negotiation) will be provided by the Seller's Solicitors. 6. VAT: The VAT position relating to the property may change without notice. 7. To find out how we process Personal Data, please refer to our Group Privacy Statement and other notices at <https://www.knightfrank.com/legals/privacy-statement>.

Particulars dated February 2026. Photographs and videos dated February 2026. All information is correct at the time of going to print. Knight Frank is the trading name of Knight Frank LLP. Knight Frank LLP is a limited liability partnership registered in England and Wales with registered number OC305934. Our registered office is at 55 Baker Street, London W1U 8AN. We use the term 'partner' to refer to a member of Knight Frank LLP, or an employee or consultant. A list of members names of Knight Frank LLP may be inspected at our registered office. If you do not want us to contact you further about our services then please contact us by either calling 020 3544 0692, email to marketing.help@knightfrank.com or post to our UK Residential Marketing Manager at our registered office (above) providing your name and address.