



SALES

LETTINGS

MANAGEMENT

chiswick@tatepartnership.co.uk

020 8996 0000

TATEPARTNERSHIP.CO.UK



Chiswick W4

£1,875 pcm

*****Gated Car Park. Allocated Parking Space*****

Scheduled for Full Decoration once vacated, a bright one bedroom apartment within this modern purpose built block (lift) at the heart of Chiswick High Road. The accommodation has; entrance hall with storage cupboard, bright living room, separate kitchen, double bedroom with fitted wardrobes and a separate bathroom. It also benefits from secure gated parking with allocated parking space. The location is central Chiswick with immediate access to the shops, restaurants and transport on the High Road. Turnham Green tube station is a few minutes walk. Energy efficient EPC rating of B. Available late March, unfurnished.

The Windmill

Approximate Gross Internal Area = 39.6 sq m / 426 sq ft

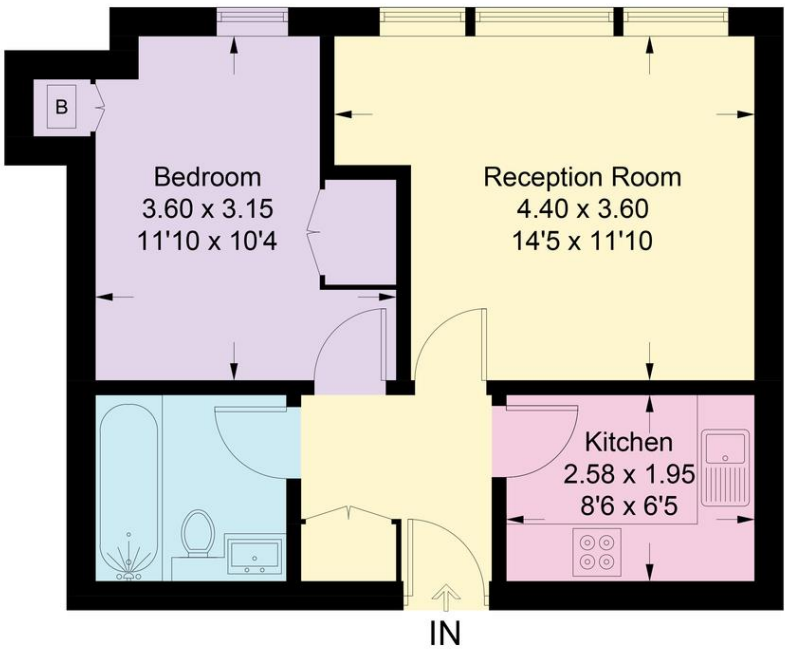


Illustration for identification purposes only, measurements are approximate, not to scale. Fourlabs.co © (ID1272605)

EPC

