



Vine Place, TW3

£1,395 Per calendar month

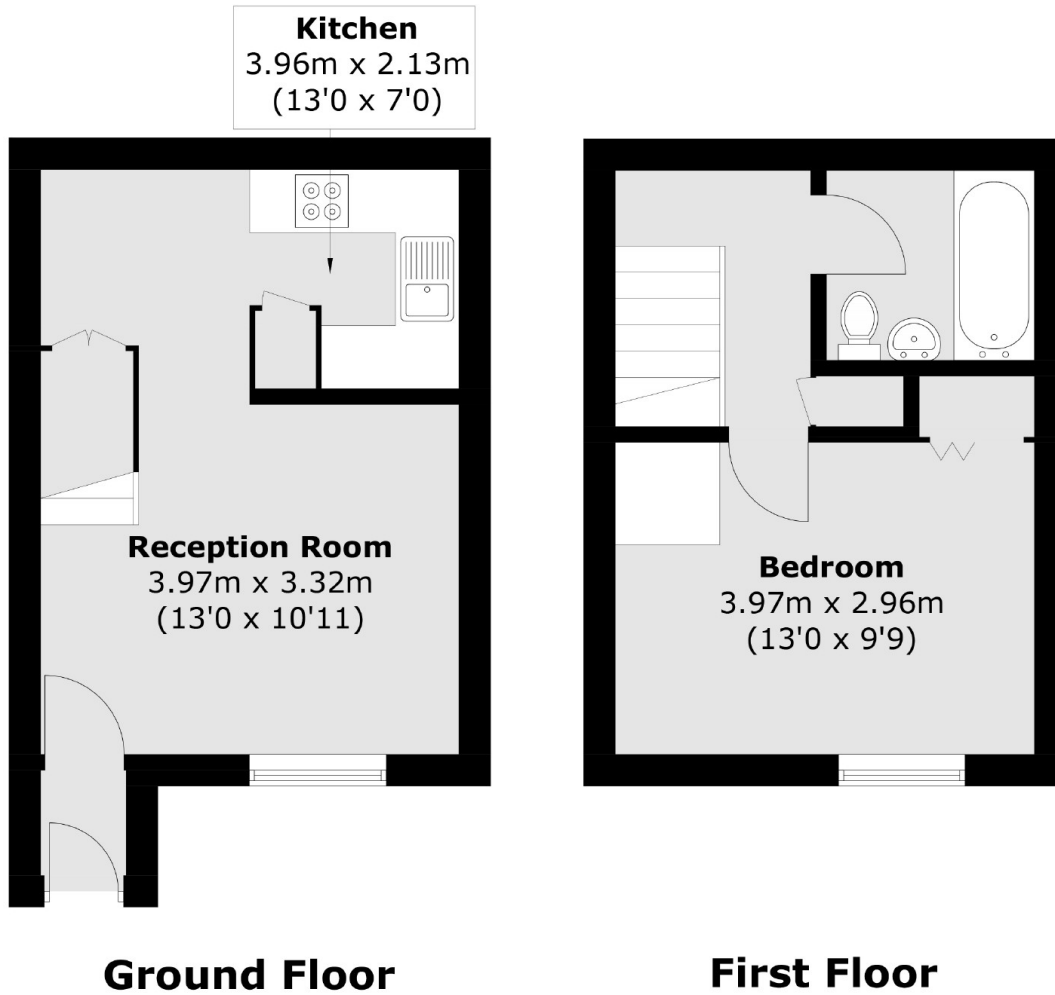
A one double bedroom house with a separate kitchen, modern bathroom, off street parking space and ample storage space. This property is ideal for a small family or a professional couple.

Vine Place is ideally situated just under a quarter of a mile from Hounslow Central Tube station and close by to the wide choice of local amenities.

Features

- One Double Bedroom
- Spacious Reception Room
- Separate Kitchen
- Modern Bathroom
- Off Street Parking
- Ample Storage Space

Vine Place,
Hounslow, TW3



Total area (approx.): 45.0 sq. m (484.4 sq. ft)