



AMIT CHAUHAN

exp[®] UK

@ amit.chauhan@exp.uk.com

amitchauhan.exp.uk.com

07816 228 619

Rutherford Way, Biggleswade, SG18

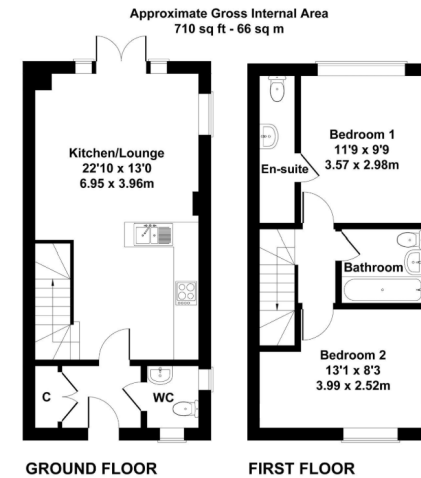
Offers Over £335,000

🛏 2 🚿 2 🚗 1



- Semi-Detached House
- Two Double Bedrooms
- Ideal For First Time Buyers
- Open Plan Kitchen Lounge
- Located In The Popular Kings Reach Development
- South Facing Garden
- Large Summerhouse
- Driveway For Two Cars
- Ensuite To Main Bedroom
- AC1436





Located on the popular Kings Reach development, this beautifully presented two-bedroom semi-detached home is ready to move into and offers modern living throughout.

The ground floor features a welcoming entrance, downstairs cloakroom and a spacious open-plan lounge/kitchen measuring approximately 22ft, creating a bright and sociable space ideal for everyday living and entertaining. French doors open directly onto the rear garden, giving the home a lovely connection between indoor and outdoor space.

Upstairs, there are two well-proportioned double bedrooms, with the main bedroom benefiting from its own en-suite shower room. There is also a modern bathroom.

Outside, the property enjoys a south-facing rear garden, perfect for enjoying the afternoon and evening sun, along with a large timber summerhouse offering excellent additional space.

