



148 Seadell Chalet Park Beach Road

Hemsby, NR29 4HS

£27,000



148 Seadell Chalet Park Beach Road

Hemsby, Great Yarmouth, NR29 4HS

Aldreds are pleased to offer this very well presented, superbly equipped, detached holiday chalet sitting in a quiet corner of the popular Seadell Holiday Park in the popular coastal village of Hemsby. The chalet is located close to commercial amenities and within walking distance to the beach. The accommodation comprises open plan kitchen/living area, two double bedrooms and shower room. Internally the presentation is of a very good standard and with the benefit of uPVC double glazed windows is an ideal low maintenance holiday property.

Open Plan Kitchen/Living Room

18'0" max x 12'2"0" max'0"

White modern kitchen units comprising base units with work surfaces over, matching wall units, stainless steel sink and drainer, space for electric cooker, freestanding fridge and microwave (appliances included), cupboard houses the electric meter and fuse box, tile effect laminate flooring, double aspect double glazed windows to front and rear aspects, uPVC entrance door, tv point, door to:-

Bedroom 1

8'11" x 8'11" (2.72 x 2.72)

Double bed, double glazed window to front aspect.

Bedroom 2

8'11" x 8'11" (2.72 x 2.72)

Bunk beds providing double and single beds, double glazed window to rear aspect.

Shower Room

Attractive white suite comprising quadrant tiled shower cubicle with electric shower, hand wash basin in vanity unit, low level WC, tiled flooring, frosted double glazed window to rear aspect.

Outside

The chalet faces a sunny south facing position and sits in well maintained lawned grounds with parking allowed next to the chalet.





Tenure

Leasehold.

All leases expire 28.02.2060

Ground rent & service charges for 2026 approximately £1300 per annum.

Site open from 1st March to 31st October.

Dogs allowed but must be kept on a lead.

Services

Mains water, electric & drainage.

Council Tax

Great Yarmouth Borough Council - Band 'A' (10% reduction applies for holiday use)

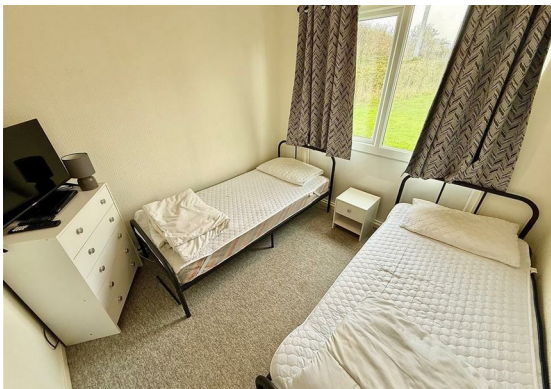
Location

Hemsby is a coastal village approximately 7 miles north of Great Yarmouth. The tourist-based part of the village lies along Beach Road and is commonly known as Hemsby Beach. At the beach end of the road are a number of cafes, shops and amusement arcades, ten-pin bowling, bingo, a play area and many different machines. A variety of seaside-style cafes and restaurants are available, offering sit-down meals, take-away fish and chips and Chinese food. Fun fairs, crazy golf courses and children's rides also feature on a number of sites along the street.

Directions

From the Yarmouth office head north along the A149 Caister Road, continue past the Yarmouth Stadium, at the roundabout turn left onto the Caister Bypass, continue over the next roundabout into Jack Chase Way, continue over the next roundabout into Scratby Road, continue into Yarmouth Road, continue over the mini roundabout into Kingsway, at the next mini roundabout turn right into Beach Road, turn right into Seadell Holiday Park, follow the access road down to the bottom, bear right where the chalet can be found in the bottom right hand corner of the site.

Y12567/11/25/CF



Floor Plan

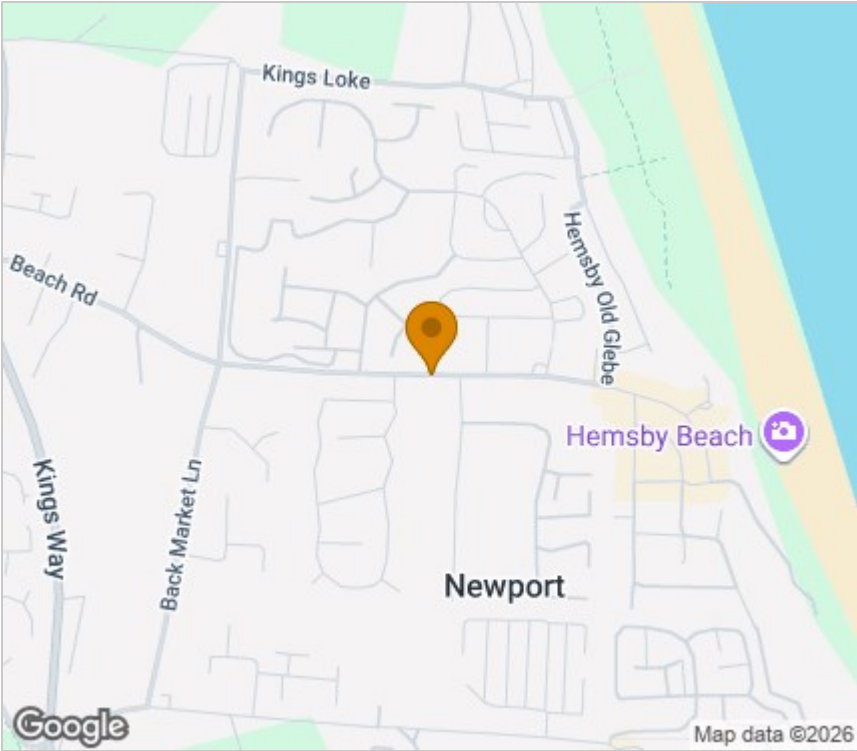


Viewing

Please contact our Aldreds Great Yarmouth Office on 01493 844891 if you wish to arrange a viewing appointment for this property or require further information.

Disclaimer
These particulars are issued on an understanding that all negotiations shall be conducted through Messrs. Aldreds. Please note: Messrs. Aldreds for themselves and for the vendors or lessors of this property whose agents they are given notice that: 1. Particulars are set out as a general outline only for guidance of intending purchasers or lessees, and do not constitute nor constitute part of, an offer or contract. 2. All descriptions, dimensions, references to condition and necessary permissions for use and occupation, and other details are given without responsibility and any intending purchasers or tenants should not rely on them as statements or representations of fact but must satisfy themselves by inspection or otherwise as to the correctness of each of them. 3. No person in the employment of Messrs. Aldreds has any authority to make or give any representation or warranty whatever in relation to this property. 4. If you are proposing to visit the property and are travelling some distance please check with Aldreds on the issue of availability prior to travelling. 5. Aldreds Property Consultants and associated services may offer additional services to the prospective purchaser for which they will be entitled to receive a commission.
Aldreds are pleased to be working with Mortgage Advice Bureau. They're an award-winning mortgage broker with over 1,400 advisers across the UK, and have access to over 12,000 mortgage products from over 90 lenders. Aldreds Estate Agents Ltd receive a commission of £200 on each completed case. Your home may be repossessed if you do not keep up repayments on your mortgage. There may be a fee for mortgage advice. The actual amount you pay will depend upon your circumstances. The fee is up to 1%, but a typical fee is 0.3% of the amount borrowed. Mortgage Advice Bureau is a trading name of Mortgage Seeker Limited which is an appointed representative of Mortgage Advice Bureau Limited and Mortgage Advice Bureau (Derby) Limited which are authorised and regulated by the Financial Conduct Authority. Mortgage Seeker Limited Registered Office: Lovewell Blake, Sixty Six North Quay, Great Yarmouth, Norfolk, NR30 1HE. Registered in England Number: 03721415. 6. Potential purchasers should check with their providers that the broadband and mobile phone coverage they would require is available.

Area Map



Energy Efficiency Graph

