



Cambridge Drive, SE12  
£585,000

**Dexters**



## Cambridge Drive, SE12

A well-presented three-bedroom terraced home situated on the popular Cambridge Drive, offering spacious and well-maintained accommodation throughout. The property is in good condition and comprises a bright and welcoming living room, a modern fitted kitchen, three well-proportioned bedrooms, and a contemporary family bathroom. Further benefits include a private rear garden, double glazing, and gas central heating. Ideally located close to local amenities, schools, and transport links, this property would make an ideal family home or investment opportunity.

Cambridge Drive is within easy reach of Lee Station, Blackheath Station and Hither Green Station providing great access links into central London, perfect for commuters. All local amenities are close by.

### Features

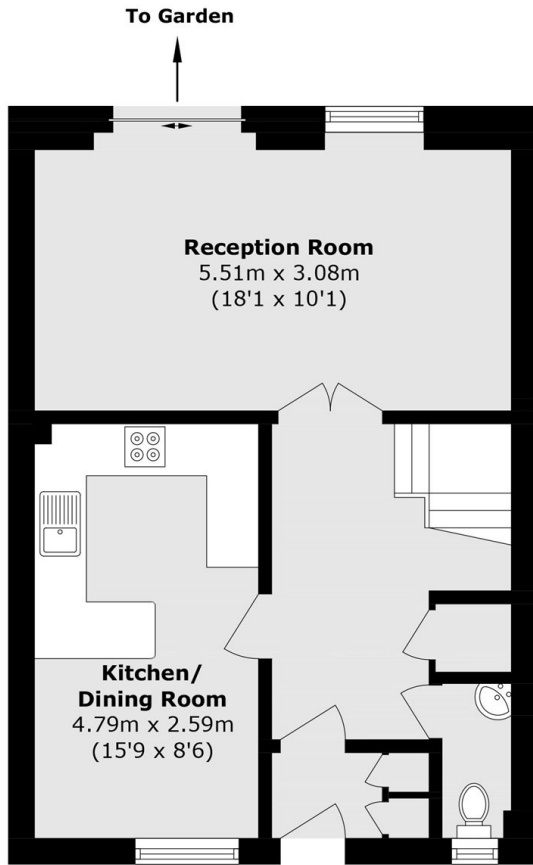
- Chain Free
- Sought After Location
- Three Bedrooms
- Private Rear Garden
- Close To Local Amenities
- Easy Access Into Central



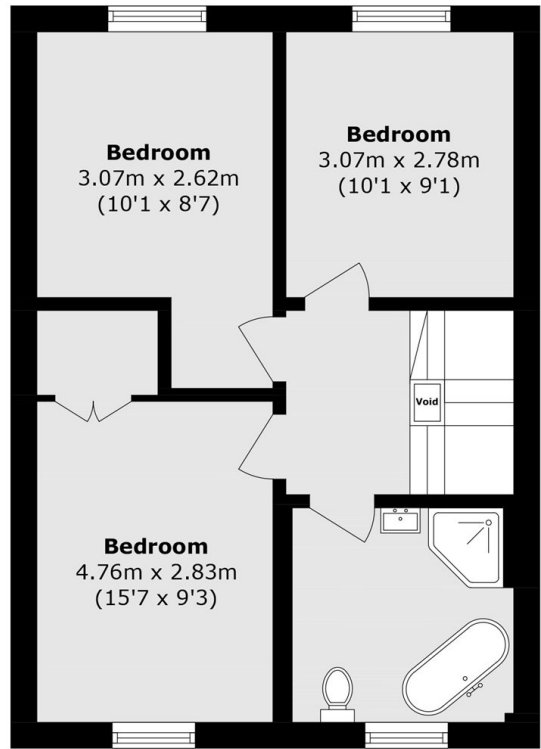




Cambridge Drive,  
London, SE12



**Ground Floor**



**First Floor**

Total area (approx.): 88.9 sq. m (956.9 sq. ft)