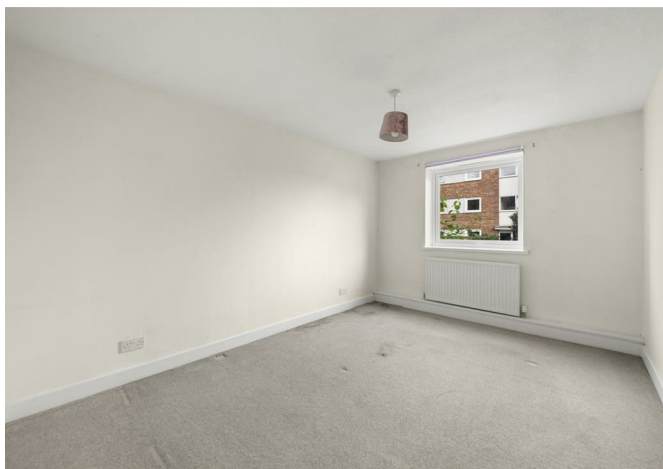




Wallace Close, Uxbridge, UB10 0BG
£340,000





Wallace Close, Uxbridge, UB10 0BG

£340,000

- Two Double Bedrooms
- Private Garden
- Fitted Kitchen With Appliances
- Long Lease
- Great Transport Links
- Ground Floor
- No Chain
- A Short Walk From Uxbridge Town Centre
- Modern Apartment Block

Description

This delightful home offers a perfect blend of comfort and modern living.

The property features two well proportioned bedrooms, a bright and airy reception room that invites natural light, creating a warm and inviting atmosphere. The sleek fitted kitchen is designed with contemporary finishes and a family bathroom which completes this floor.

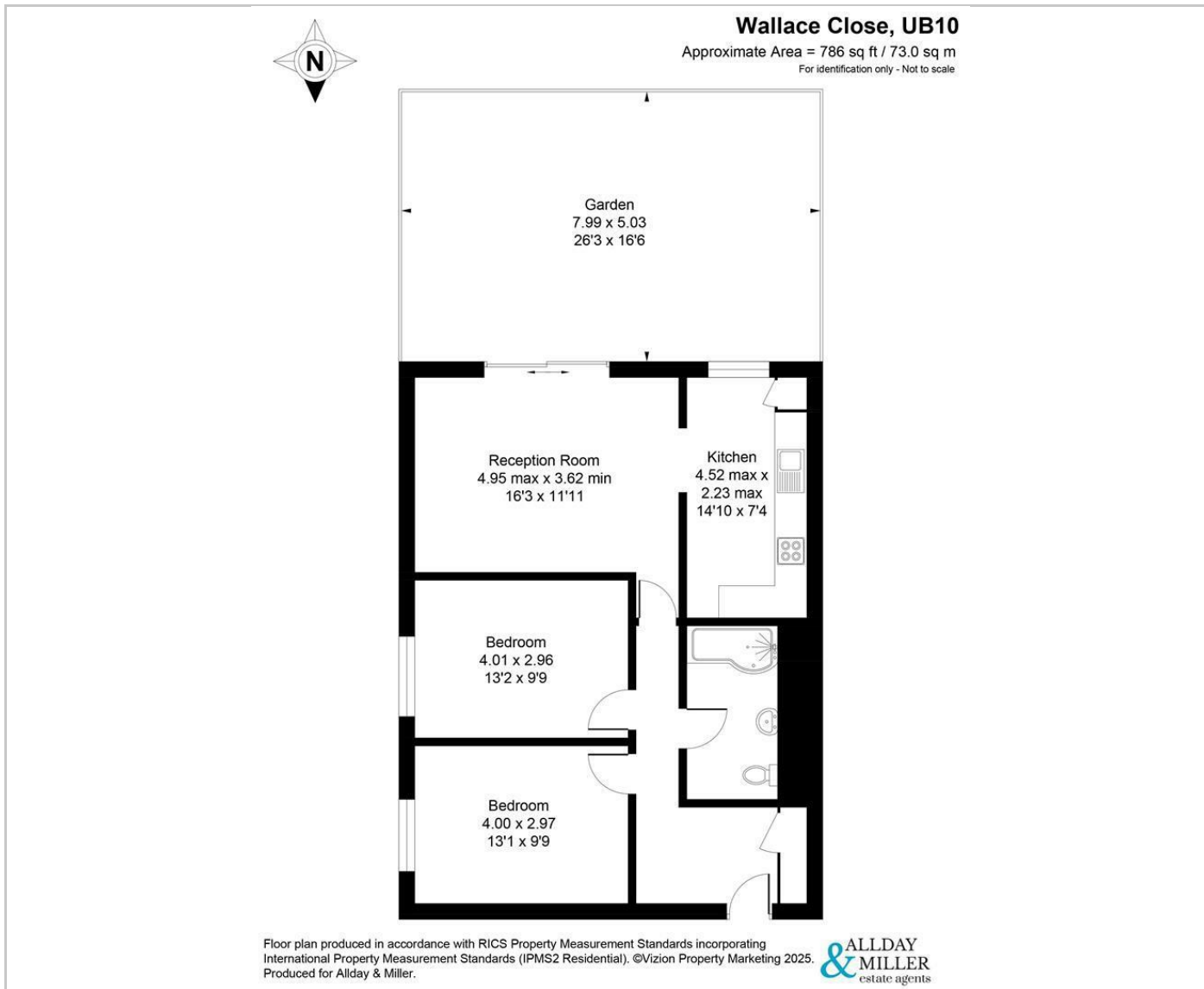
There is a private rear garden mainly laid to lawn perfect for outdoor entertainment.

Situation

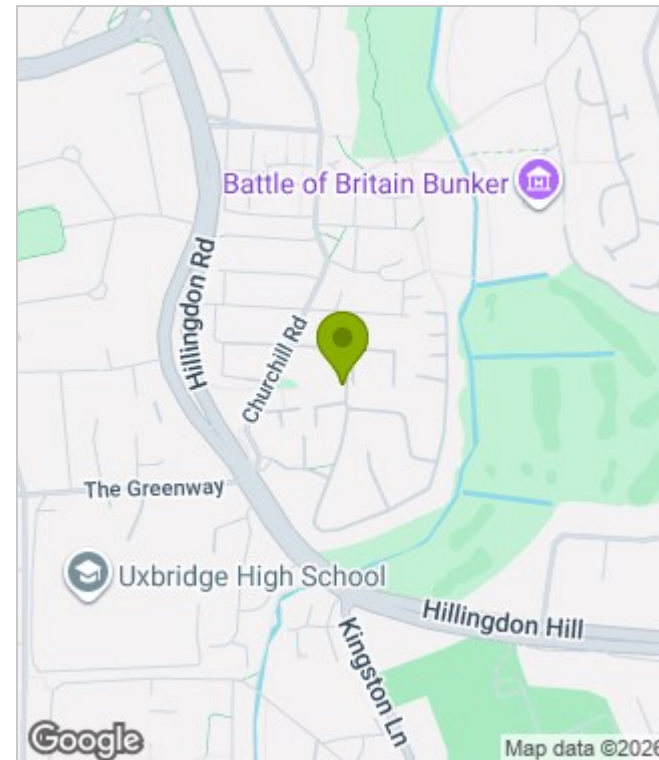
Wallace Close situated close to Uxbridge town centre with its variety of local shops, restaurants, bars, gyms, cafes and a cinema. For the commuters the Metropolitan and Piccadilly line with links to central London and the surrounding areas. Also a number of bus routes to local amenities such as Brunel university, Uxbridge Collage, Hillingdon Hospital and Heathrow airport. Highly regarded schools including John Locke Academy and Uxbridge High school are just moments away.



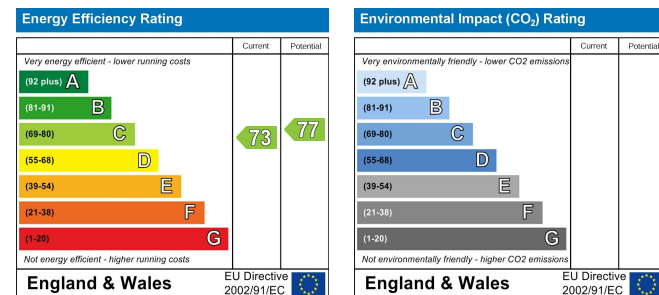
Floor Plans



Area Map



Energy Performance Graph



These particulars, whilst believed to be accurate are set out as a general outline only for guidance and do not constitute any part of an offer or contract. Intending purchasers should not rely on them as statements of representation of fact, but must satisfy themselves by inspection or otherwise as to their accuracy. No person in this firm's employment has the authority to make or give any representation or warranty in respect of the property.