



Guide Price
£280,000

Freehold

3x  1x  2x 

**Sturdee Avenue, Upper
Gillingham, Kent, ME7**

OVER 60?

Secure this property
for up to **59% less!**

Wards
Helping you move forwards



Split Level Ground Floor
Approx. 65.3 sq. metres (702.8 sq. feet)

Main features

- Chain free
- Separate bedrooms and upstairs bathroom, perfect for families
- Generous private garage and off-street parking for multiple vehicles
- Opportunity to improve and add your own taste internally (subject to usual consents)
- Walking distance to local schools and amenities

Accommodation

SPLIT LEVEL GROUND FLOOR

Entrance Hall
Dining Area: 12'0 x 10'3 (3.66m x 3.13m)
Lounge: 12'5 x 12'0 (3.79m x 3.66m)
Kitchen: 8'3 x 7'4 (2.52m x 2.24m)
Study/Family Room: 17'8 x 9'10 (5.39m x 3.00m)
Utility Room: 14'5 x 6'8 (4.40m x 2.03m)

FIRST FLOOR

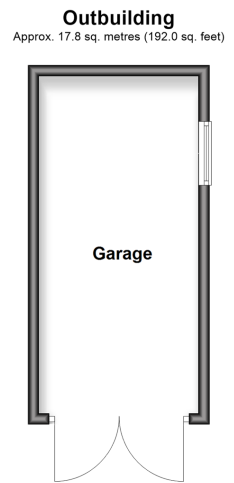
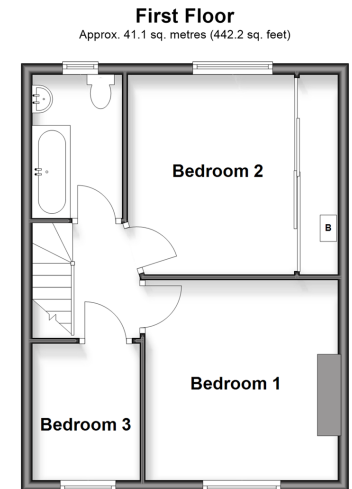
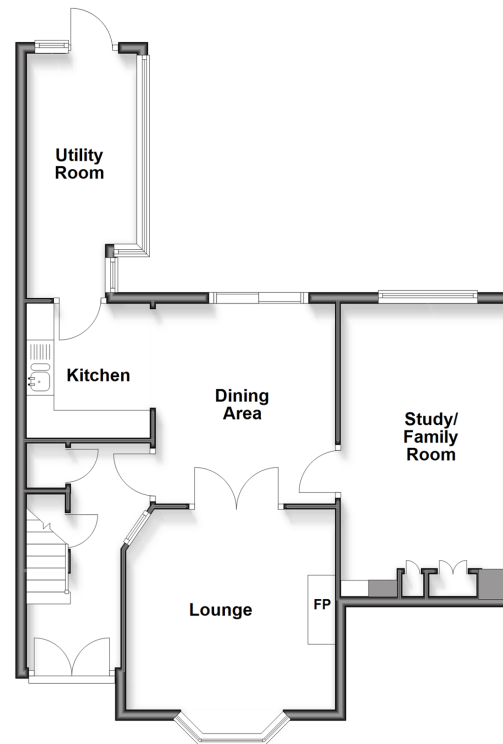
Landing
Bedroom 3: 8'4 x 6'9 (2.54m x 2.06m)
Bedroom 1: 12'4 x 10'1 (3.76m x 3.08m)
Bedroom 2: 12'0 x 11'2 (3.66m x 3.41m)
Bathroom

OUTBUILDING

Garage

OUTSIDE

Front Garden
Rear Garden
Off-Street Parking



Call Gillingham - 01634 851191 ■ wardsofkent.co.uk

■ Legal advice should be taken to verify fixtures/fittings, planning, alterations and/or lease details
■ Through a Homewise Home For Life Plan people aged 60+ can secure this property for up to 59% less, by purchasing a Lifetime Lease

■ Appliances & services are untested, dimensions are approximate and floor plans are not to scale



11018830/20260130/ML/HF