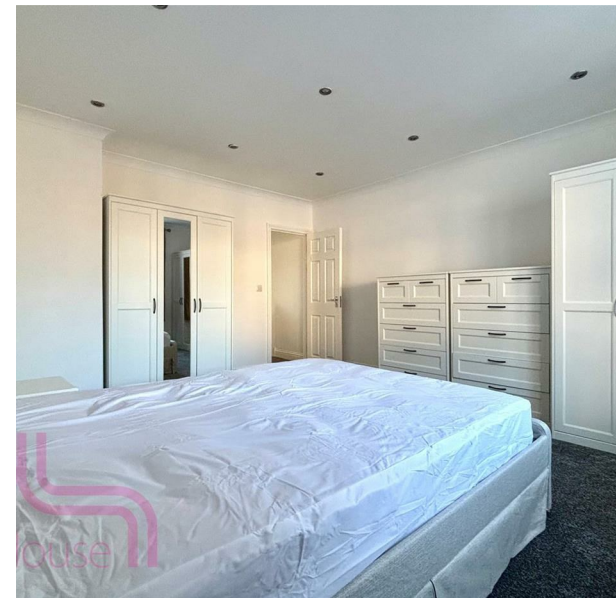


Runnymede Gardens, Twickenham, TW2 7BS

£1,750

Council Tax Band:



Nestled in the picturesque Runnymede Gardens of Twickenham, this charming two-bedroom split level Maisonette. Offers a wonderful opportunity for those seeking a rental in a highly sought-after residential area. The property is offered inclusive of Council Tax, making it an attractive option for potential tenants.

As you step inside, you are greeted by a spacious reception room that provides a warm and inviting atmosphere. The modern open-plan kitchen is perfect for those who enjoy cooking and entertaining, while the separate family bathroom features a contemporary three-piece suite. Upstairs, you will find two generously sized double bedrooms, both equipped with ample storage, ensuring comfort and convenience. Additionally, upstairs there is a separate W/C for added practicality & a private rear Garden.

One of the standout features of this property is its prime location. Just a short stroll away, Whitton High Street boasts a vibrant selection of shops, supermarkets, restaurants, and cafes, making it ideal for those who appreciate having local amenities within easy reach. For commuters, the property is conveniently situated near Whitton British Rail station, providing straightforward access to central London and beyond. Numerous bus links are also available, ensuring seamless travel around the area.

Families will particularly appreciate the proximity to several well-regarded local schools, making this home an excellent choice for those with educational needs.

- Tenancy Deposit: 5 Weeks (£2015 based on a rental of £1750PCM)
- EPC rating: Commissioned
- Council Tax Band: Inclusive



Open House London



Energy Efficiency Rating		
	Current	Potential
Very energy efficient - lower running costs		
(92 plus) A		
(81-91) B		
(69-80) C		
(55-68) D		
(39-54) E		
(21-38) F		
(1-20) G		
Not energy efficient - higher running costs		
England & Wales	EU Directive 2002/91/EC	