

# 16 Bradmore Gardens, £289,000

RICHMOND  
VILLAGES

Part of Bupa

(Other charges apply)



EPC - C



## 2 bedroom second floor apartment

A spacious second-floor, two-bedroom apartment. The accommodation features an entrance hall, fitted kitchen, living room with balcony, main bedroom with en-suite shower room, a second double bedroom and a bathroom. The apartment is situated close to the main village centre and village facilities and enjoys a pleasant East-facing aspect overlooking courtyard gardens.

### Specification

- Entrance hall with large storage cupboard with Bosch washing machine and Bosch tumble dryer.
- Large bright living room with an East-facing balcony with a courtyard view.
- Modern fitted kitchen with granite worktops, under cupboard lighting and built in Neff appliances including electric oven and hob, extractor fan, fridge/freezer and dishwasher.
- Spacious main bedroom with fitted wardrobes.
- Second double bedroom.
- Second bathroom with overhead shower and fully fitted white suite.
- Central heating radiators in all rooms. TV and satellite points\*.
- Well stocked flower borders and lawns maintained by the Village Gardeners.
- Allocated parking space for one car.



\*Satellite subscription not included.

Important Notice: These particulars are intended to give a fair and substantially correct overall description. Other fees and charges apply, please contact the Village Advisers for further details. Properties are sold on a 125 year lease and this property has 118 years remaining.

01332 794 300

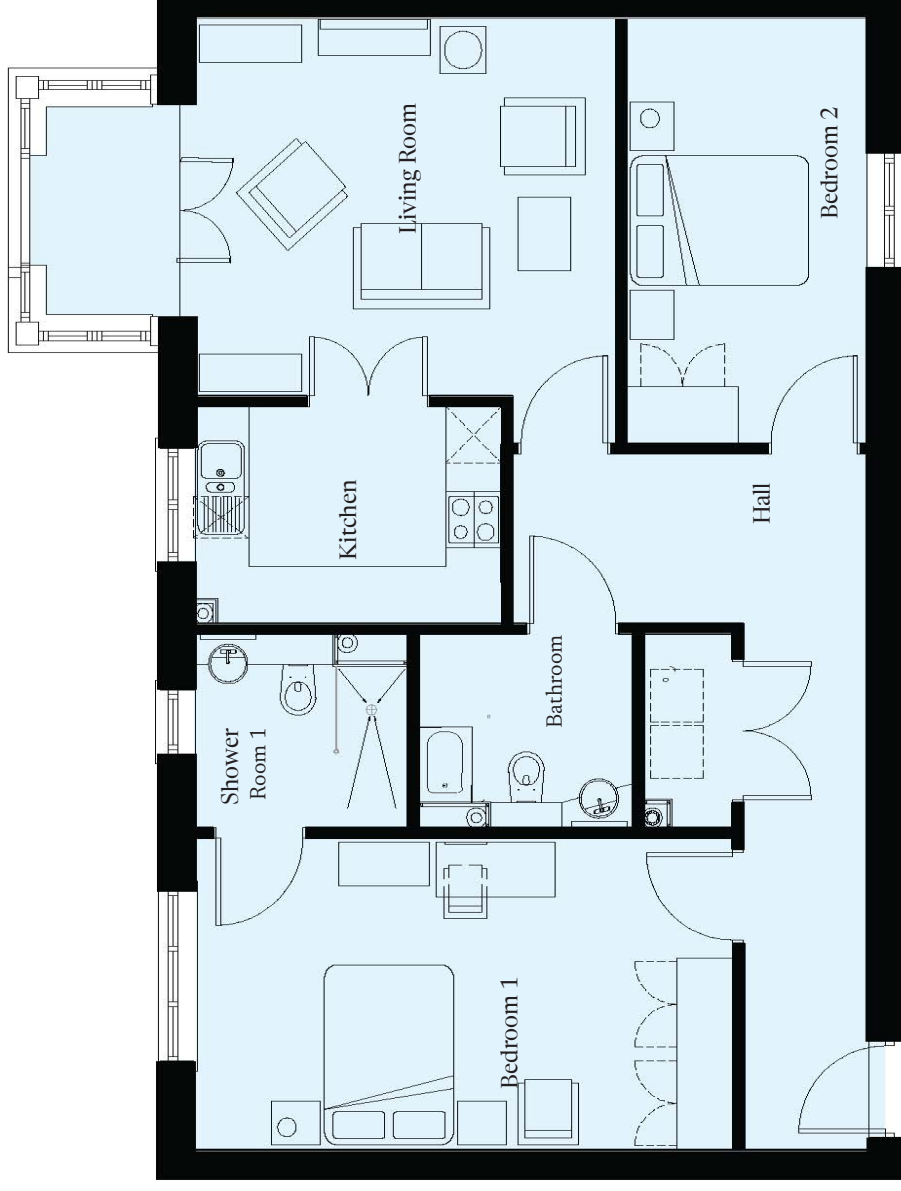
astonontrent@richmond-villages.com

Richmond Villages Aston-on-Trent,  
Richmond Drive, Aston-on-Trent, Derbyshire, DE72 2EA

# 16 Bradmore Gardens

Second Floor | 936ft<sup>2</sup>

<b>Kitchen</b>
3310mm x 2300mm 10'10" x 7'7"
<b>Living Room</b>
6107mm x 3965mm 20'0" x 13'0"
<b>Bedroom 1</b>
5785mm x 3270mm 19'0" x 10'9"
<b>Shower Room 1</b>
2300mm x 2050mm 7'7" x 6'9"
<b>Bedroom 2</b>
4500mm x 2600mm 14'9" x 8'6"
<b>Bathroom</b>
2265mm x 2050mm 7'5" x 6'9"



These particulars are intended to give a fair and substantially correct overall description.

Measurements have been taken at 1500mm skirting height.

All dimensions are approximate. Bedroom measurements include the wardrobe if applicable. Room measurements include bay windows if applicable.

Furniture layout is to give an indicative impression. Although all efforts have been made to ensure its accuracy at time of print dimensions, fixtures, fittings, finishes and specifications are subject to change without notice.

The properties are sold unfurnished.

