

**LONDON
VICTORIA
GROUPS** 



**LONDON
VICTORIA
GROUPS** 



**LONDON
VICTORIA
GROUPS** 



**LONDON
VICTORIA
GROUPS** 

36 Rosemont Road

, London W3 9LY

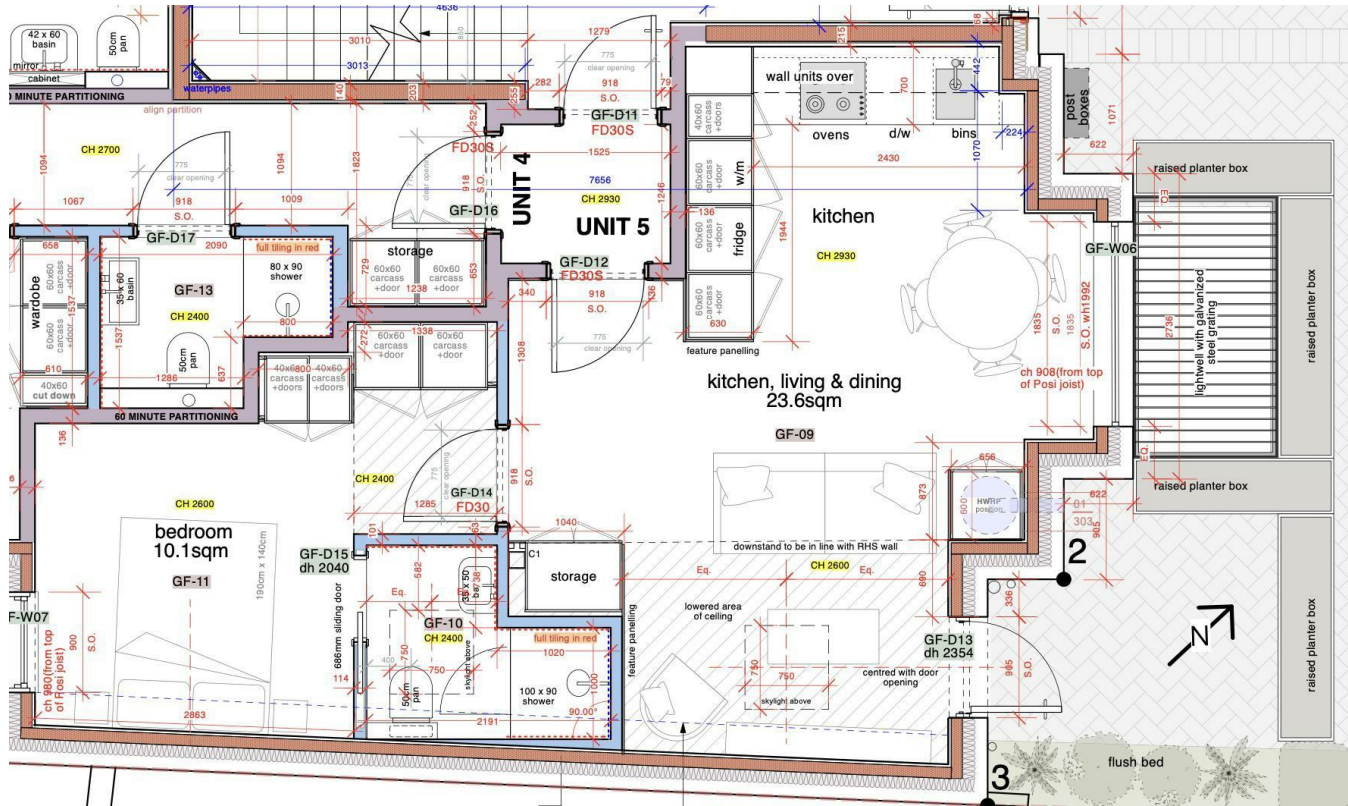
- Excellent Transport Links: West Acton / Ealing Common
- Newly Refurbished
- EPC-B
- Private Garden
- Fully Furnished

£2,099 Per Month



**LONDON
VICTORIA
GROUPS** 

Local Authority
 Council Tax Band **New Build**
 EPC Rating **B**



London Office Office

Spaces Victoria, 25 Wilton Road, Pimlico,
 London, SW1V 1LW

Contact

020 3084 3094
 XL@londonvictoriagroups.co.uk
 www.londonvictoriagroups.co.uk

Agents Note: Whilst every care has been taken to prepare these particulars, they are for guidance purposes only. All measurements are approximate and for general guidance purposes only and whilst every care has been taken to ensure accuracy, they should not be relied upon and potential buyers/tenants are advised to recheck the measurements.