



## Midland Terrace, NW2

£700,000

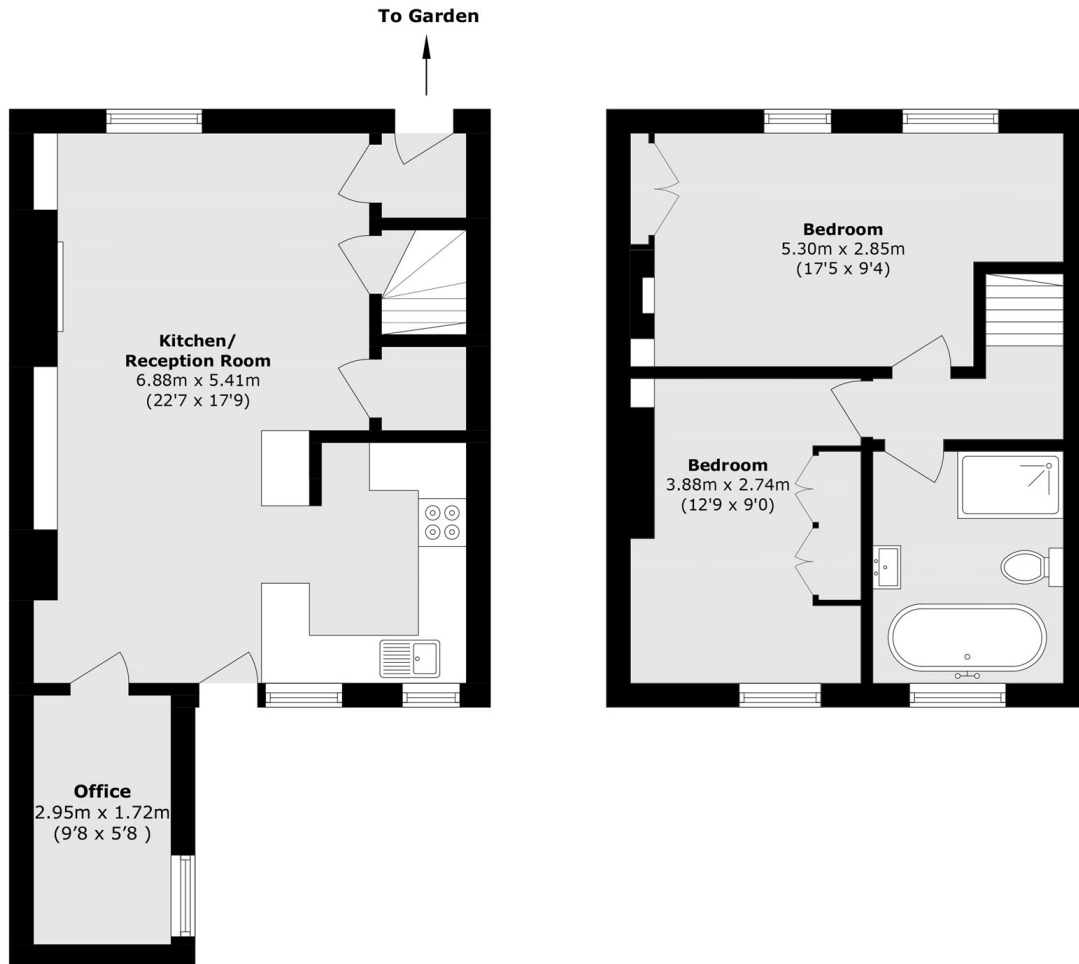
A freehold "railway cottage" renovated throughout and offering a spacious, open plan living area with well-equipped kitchen, office, two double bedrooms, family bathroom with separate shower, ample storage and access to a private courtyard and communal gardens.

Midland Terrace is located at the heart of the quiet Railway Cottages 'The Terraces' and is part of a welcoming community. Numerous bus routes and Cricklewood station (Thameslink) are within easy reach for access to central London.

### Features

- Two Double Bedrooms
- Railway Cottage
- Courtyard Garden
- Fully Renovated
- Open Plan Living Area
- Separate Office

# Midland Terrace, London, NW2



Total area (approx.): 80.0 sq. m (861.1 sq. ft)