



Bittacy Hill, NW7

£425,000

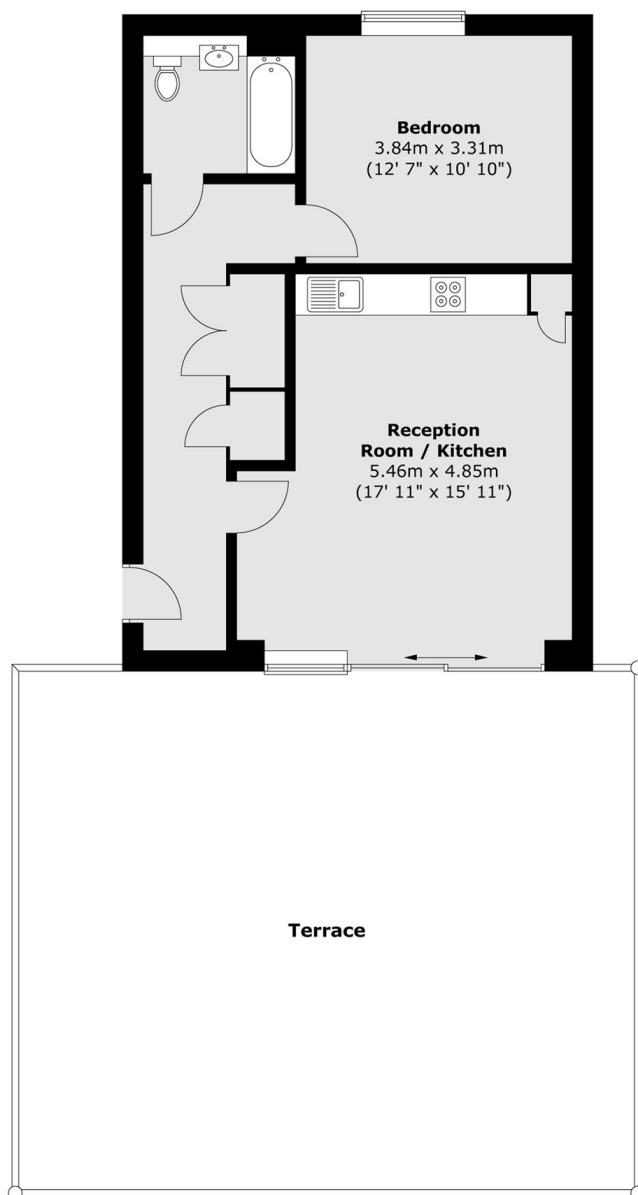
A beautifully presented one bedroom apartment set on the top floor of this sought-after, modern development. This property benefits from an open plan kitchen/ reception room and a large terrace, offering stunning views of the capital.

Yarrow apartments is located just 0.3 miles from Mill Hill East station (Northern line) Mill Hill Village is close by, offering countryside views and walks. Also located a short walk from the local amenities Mill Hill offers such as shops, cafés, restaurants, and a leisure centre.

Features

- One Double Bedroom
- Top Floor Flat
- Large Private Terrace
- Modern Development
- Open Plan Kitchen/ Living
- Lift

Bittacy Hill, London, NW7



Total area (approx.) : 55.9 sq. m (602 sq. ft)
Total terrace area (approx.) : 62.2 sq. m (669 sq. ft)