



Chesterfield Hill
Mayfair, W1J

CHESTERTONS





A truly stunning two bedroom apartment situated within the brand new development of 8 Chesterfield Hill. Designed by Wolff Architects & impeccably interior designed by Martin Kemp Design the apartment is a one of a kind Mayfair residence.

- Stunning modern development in Mayfair
- Two en-suite double bedrooms
- Open plan kitchen & living room
- Guest WC
- Air conditioning
- Underfloor heating

£15,500 pcm

Additional tenant charges apply (fees apply to non-AST tenancies only)

Tenancy Agreement Fee: £300

References per Tenant/Guarantor: £60

Inventory check (approx. £100 – £250 inc. VAT)

chestertons.co.uk/property-to-rent/applicable-fees

Energy Efficiency Rating		Current	Potential
90-100	A		
81-89	B	83	83
69-80	C		
55-68	D		
39-54	E		
21-38	F		
1-20	G		

Not energy efficient - higher running costs

England, Scotland & Wales EU Directive 2002/91/EC

Minimum Term: 12 months
Deposit Required: £21,461.54
Local Authority: City of Westminster
Council Tax Band: A
EPC Rating: B
Furnished

Chestertons Mayfair Lettings

47 South Audley Street

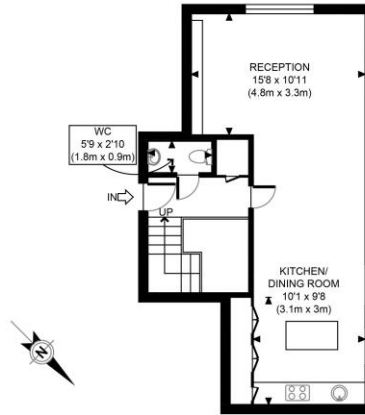
Mayfair

London

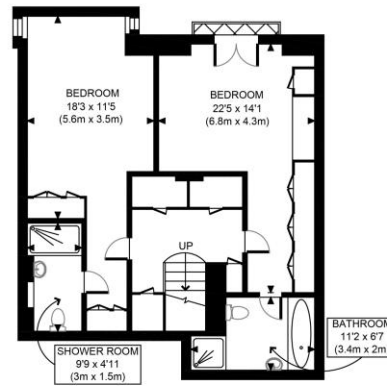
W1K 2QA

mayfairlettingsusers@chestertons.co.uk

020 7288 8301



GROUND FLOOR
GROSS INTERNAL
FLOOR AREA 570 SQ FT



LOWER GROUND FLOOR
GROSS INTERNAL
FLOOR AREA 735 SQ FT

APPROX. GROSS INTERNAL FLOOR AREA 1305 SQ FT / 121 SQM	
Disclaimer: Floor plan measurements are approximate and are for illustrative purposes only. While we do not doubt the floor plan accuracy and completeness, you or your advisors should conduct a careful, independent investigation of the property in respect of monetary valuation	
Chesterton Hill	date 11/11/21

Chesterton UK Services Limited trading as Chestertons for themselves and for the vendor of this property whose agents they are, give notice that (i) these particulars do not constitute any part of an offer or contract, (ii) all statements contained within these particulars are made without responsibility on the part of Chestertons or the vendor, (iii) whilst made in good faith, none of the statements contained within these particulars are to be relied upon as a statement or representation of fact, (iv) any intending purchasers must satisfy themselves by inspection or otherwise as to the correctness of each of the statements contained within these particulars, (v) the vendor does not make or give either Chestertons or any person in their employment any authority to make or give representation or warranty whatsoever in relation to this property. Wide angle lenses may be used. ©Copyright Chestertons | Chesteron Global Ltd | Registered Office 5th Floor, The Lantern, 75 Hampstead Road, London, NW1 2PL Registered Company Number 05334580.



This paper is
100% recyclable