





Offers in excess of  
£425,000

To View:

Holland & Odam

3 Farm Road, Street

Somerset, BA16 0BJ

01458 841411

street@hollandandodam.co.uk



4



2



1

Energy  
Rating **TBC**

**Council Tax Band D**



**Services**

Mains electricity, gas, water and drainage are connected. Gas central heating system.

**Local Authority**

Somerset Council

03001232224

somerset.gov.uk

**Tenure**

Freehold

## Directions

From the High Street, proceed past Avalon Guns on the left and shortly after, turn left into Stonehill. At the top of the hill, turn right and follow the road, negotiating the sharp left-hand bend into Brooks Road. Take the next right into Brookfield Way, then follow the road for a short distance before taking the fourth left into Westacre. The property will be found directly in front of you on the left.

## Description

The property is entered via a spacious and welcoming entrance hall which immediately sets the tone for this well-proportioned family home. There is a useful under-stairs storage space and a ground floor cloakroom fitted with a WC and wash basin, along with an additional storage cupboard providing practical everyday convenience. Doors lead to the principal ground floor rooms and stairs rise to the first floor. Positioned to the left of the hallway is a generously sized lounge featuring an attractive gas fireplace which creates a cosy focal point to the room. A large window to the front allows an abundance of natural light to flood the space, making it a bright and comfortable room in which to relax. A wide opening leads seamlessly through to the kitchen/dining room, enhancing the sociable flow of the ground floor accommodation. The kitchen/dining room is a stylish and well-designed open plan space, ideal for modern family living. The kitchen area is fitted with a range of high gloss wall, base and drawer units complemented by integrated appliances including a double oven, hob, fridge and dishwasher. A breakfast bar provides additional seating and preparation space, making it perfect for casual dining in a busy household. The dining area offers ample space for a family-sized table and chairs, creating a wonderful social environment that is perfectly suited to both everyday family meals and entertaining guests. From the dining area, sliding doors open into the conservatory a versatile additional reception space which enjoys pleasant views over the garden and provides direct access outside. This room offers flexibility for a variety of uses such as a sitting area, playroom or home office. Completing the ground floor is a particularly useful utility room which continues the style of the kitchen with fitted wall units and incorporates integrated appliances including a freezer and washing machine. From here there is an internal door to the garage as well as a further door providing access out to the garden.

Stairs rise from the entrance hall to the first floor landing, where there is access to the loft space and a useful airing cupboard providing additional storage. The principal bedroom benefits from fitted wardrobes providing excellent storage and enjoys the advantage of a contemporary en-suite shower room. The en-suite is stylishly appointed with a vanity unit incorporating a wash hand basin and storage beneath, a WC and a large shower enclosure, all finished in a modern design. There are three further bedrooms, two of which benefit from fitted wardrobe space. These rooms enjoy pleasant views towards the surrounding countryside and offer flexible accommodation for family members, guests or the potential for a home office if required. Completing the first floor accommodation is a stylish family bathroom fitted with a modern suite comprising a bath with shower over, WC and wash hand basin set within a vanity unit providing useful storage, all finished to a contemporary standard.

## Location

Westacre lies on the western side of the vibrant mid-Somerset town of Street, well known as the home of Clarks Shoes and Millfield School. Street offers a wide range of amenities including primary and secondary schools, Strode College, Strode Theatre, indoor and outdoor swimming pools, a health centre, library, and a variety of pubs and restaurants. The historic town of Glastonbury is just 2.5 miles away, with the cathedral city of Wells approximately 9 miles distant. For commuters, the A303 at Podimore is 9.5 miles away and the M5 (junction 23) is within 12 miles, making the location well-connected regionally.





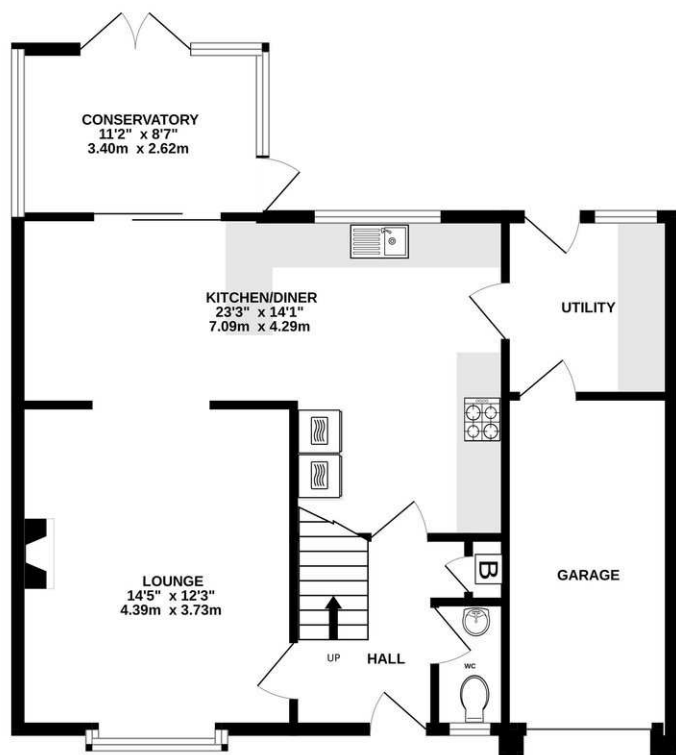
The rear of the property features a well-enclosed, west-facing garden that enjoys a good degree of privacy, is not overlooked, and benefits from charming views over the countryside beyond. A generous patio extends across the rear of the house, providing an ideal space for outdoor seating and entertaining. Beyond, the garden is mainly laid to lawn and complemented by well-stocked shrub borders, adding colour and interest throughout the year. This attractive outdoor space is perfect for al fresco dining and making the most of the afternoon and evening sun.

To the front of the property there is an area laid to lawn alongside driveway parking which leads to the garage. The garage is fitted with an up and over door and benefits from power and light.

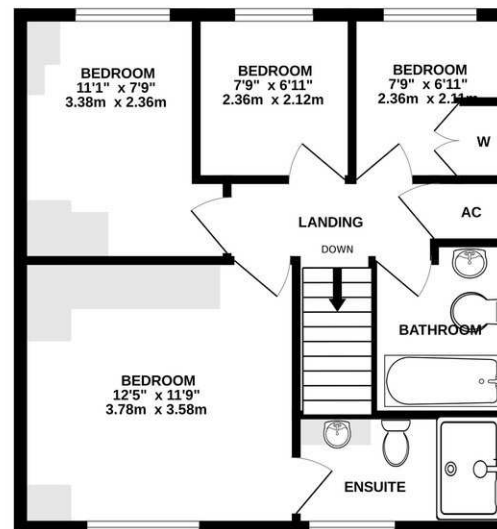
- Quiet cul-de-sac position on the western edge of Street and arguably one of the most desirable plots within the close.
- Spacious lounge with feature gas fireplace and excellent natural light.
- Stylish open plan kitchen/dining room with integrated appliances and breakfast bar.
- Principal bedroom with fitted wardrobes and contemporary en-suite shower room.
- Enclosed west-facing garden with patio, lawn and well stocked borders.
- Driveway parking leading to garage with power and light.



GROUND FLOOR  
749 sq.ft. (69.6 sq.m.) approx.



1ST FLOOR  
497 sq.ft. (46.2 sq.m.) approx.



TOTAL FLOOR AREA : 1247 sq.ft. (115.8 sq.m.) approx.

Whilst every attempt has been made to ensure the accuracy of the floorplan contained here, measurements of doors, windows, rooms and any other items are approximate and no responsibility is taken for any error, omission or mis-statement. This plan is for illustrative purposes only and should be used as such by any prospective purchaser. The services, systems and appliances shown have not been tested and no guarantee as to their operability or efficiency can be given.  
Made with Metropix ©2026

**RESIDENTIAL LETTINGS :** Holland & Odam offer a comprehensive residential lettings service. Whether you are a landlord or a tenant, please contact any of our offices to discuss your requirements.

**FINANCIAL SERVICES :** Would you like to have the opinion of a fully Independent Financial Adviser who has access to the entire mortgage market place and could help you consider all aspects of financing your proposed purchase? If so, please ring us on 01458 841411 and we can arrange a free consultation for you at a time and a place to suit you with The Levels Financial. \*

**CONSUMER PROTECTION FROM UNFAIR TRADING REGULATIONS 2008 :** The Agent has not tested any apparatus, equipment, fixtures and fittings or services and so cannot verify that they are in working order or fit for the purpose. A Buyer is advised to obtain verification from their Solicitor or Surveyor. References to the Tenure of a Property are based on information supplied by the Seller. The Agent has not had sight of the title documents. A Buyer is advised to obtain verification from their Solicitor. Items shown in photographs are not included unless specifically mentioned within the sales particulars. They may however be available by separate negotiation. Buyers must check the availability of any property and make an appointment to view before embarking on any journey to see a property.

**DATA PROTECTION :** Personal information provided by customers wishing to receive information and/or services from the estate agent and the Property Sharing Experts (of which it is a member) for the purpose of providing services associated with the business of an estate agent but specifically excluding mailing or promotions by a third party. If you do not wish your personal information to be used for any of these purposes, please notify us.

\*YOUR HOME MAY BE REPOSSESSED IF YOU DO NOT KEEP UP REPAYMENTS ON YOUR MORTGAGE OR ANY OTHER DEBT SECURED ON IT. WRITTEN QUOTATIONS ARE AVAILABLE ON REQUEST.

