



FIREFLY AVENUE

Old Railway Quarter, Swindon, Wiltshire SN22GE

Firefly Avenue, Old Railway Quarter, Swindon SN22GE

- AVAILABLE FROM 28.05.2026
- First Floor Apartment
- Two DOUBLE Bedrooms
- Open Plan Lounge/Diner/Kitchen
- White Goods Included
- Allocated Parking
- 16ft Balcony
- En-Suite Shower To Master
- Bathroom
- Excellent Location

£1,200 PCM



We are delighted to offer this spacious and well presented two DOUBLE bedroom apartment set in the heart of Swindon's heritage district. The accommodation comprises of entrance hall with intercom system, open plan living/dining/kitchen with French doors to balcony, master bedroom (with ensuite shower), one further bedroom and bathroom. The property also benefits from an allocated parking space. The area is steeped in both local and national history and is quickly becoming the cultural hub of Swindon with The National Trust HQ, Steam Museum and English Heritage National Monuments Record Centre and The Outlet Village with restaurants you will never be short of things to do and see. Must be viewed.

Sizes

Please note, all measurements of room sizes given are not guaranteed and figures are for guidance only.

Viewings

Strictly via our Swindon office telephone (01793) 641641.

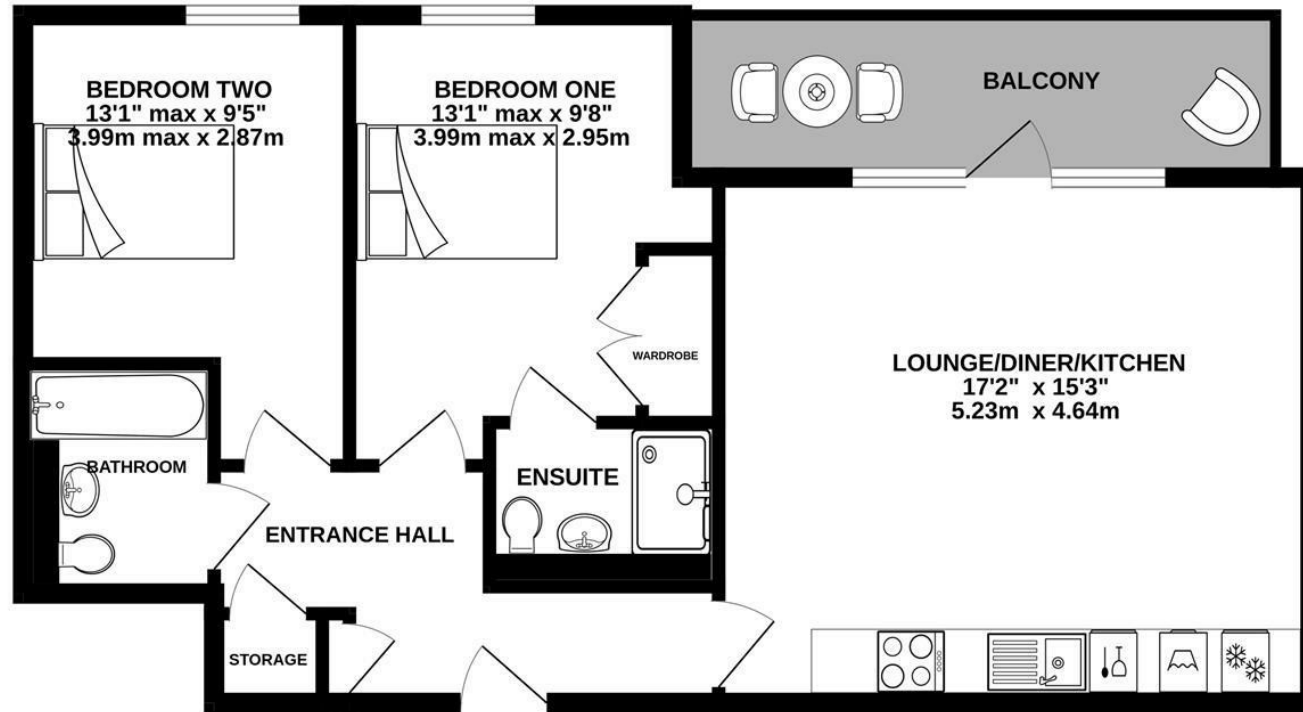
Photographs

Please note that photos were taken prior to the current tenants moving into the property.



FIRST FLOOR

633 sq.ft. (58.8 sq.m.) approx.



TOTAL FLOOR AREA : 633 sq.ft. (58.8 sq.m.) approx.

Whilst every attempt has been made to ensure the accuracy of the floorplan contained here, measurements of doors, windows, rooms and any other items are approximate and no responsibility is taken for any error, omission or mis-statement. This plan is for illustrative purposes only and should be used as such by any prospective purchaser. The services, systems and appliances shown have not been tested and no guarantee as to their operability or efficiency can be given.
Made with Metropix ©2026



01793 641641

101 Commercial Road, Swindon, SN1 5PL

info@primaryhomesandlettings.co.uk

