



Town • Country • Coast



Bedford Street
Bere Alston, Yelverton

Guide Price £175,000



Bedford Street

Bere Alston, Yelverton

Set in this sought after village and only a short walk from the village amenities is this immaculately presented two bedroom cosy character cottage, with many features including exposed beams, deep sills, timber doors and Inglenook fireplace housing a multi-fuel stove. A ground floor shower room and sun-trap private courtyard garden to the rear. The cottage is double glazed throughout.

The front door leads into the sitting room, with beamed ceiling and attractive stone fireplace housing a multi-fuel stove. Useful cloaks cupboard with light, recess for dresser or book-shelving and staircase rising to the first floor. The kitchen is attractively fitted with a range of wall and base units incorporating an electric built-in oven with ceramic hob above, deep slate sill and window, stable style door to the rear and recess housing a fridge. A door into a ground floor shower room with cubicle and electric shower over, wash basin and low level WC, built-in storage cupboard.

The first floor landing, with storage cupboard, leads to a single bedroom overlooking the rear and a double bedroom with deep sill window to front and built-in storage cupboard and two further wardrobes.

To the rear of the cottage is a sun-trap rear courtyard garden, which is not overlooked, together with decked area, perfect for a bistro set, barbeque or pots. A timber latch gate to the rear leads to a right of access across the neighbouring property.





Sitting Room

14'8" x 13'1" (4.49 x 3.99)

Kitchen

11'9" x 6'2" (3.59 x 1.89)

Ground Floor Shower Room

5'9" x 5'4" (1.76 x 1.65)

First Floor Landing

Bedroom 1

13'2" x 7'11" (4.02 x 2.43)

Bedroom 2

9'2" x 6'5" (2.80 x 1.96)

Services

Mains water, electricity and drainage.

Local Authority

West Devon Borough Council - Band A

Tenure

Freehold

EPC

E50

Situation

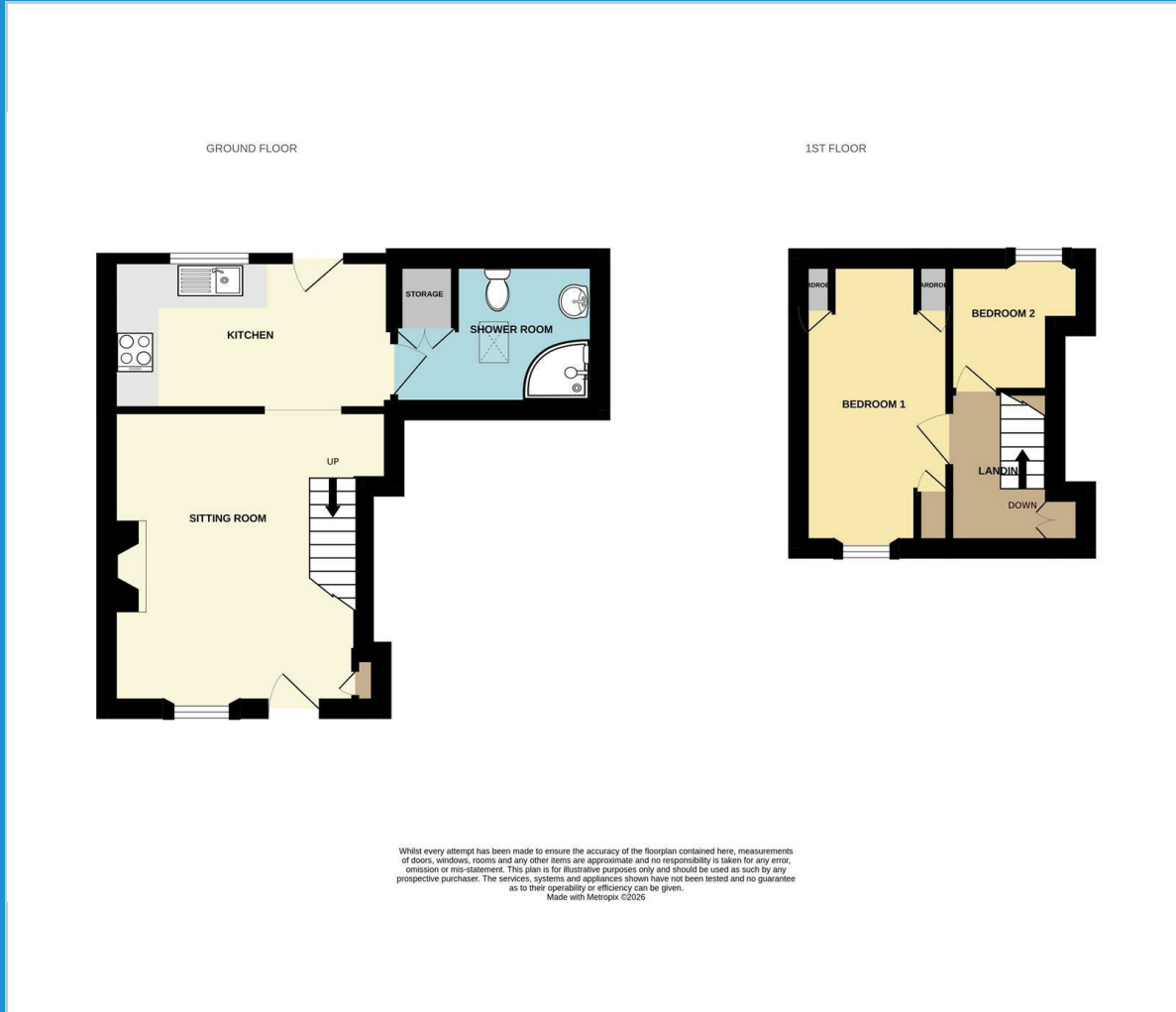
Bere Alston is a village in West Devon which has a regular bus service to Tavistock and also boasts many amenities including a primary school, post office butchers, Co-Op, public house, doctor's surgery and a train station which links the village to Plymouth. The Bere Peninsula is located between the Ocean City of Plymouth and the Ancient Stannary Town of Tavistock.

Directions

Enter the village of Bere Alston. Head down the hill along Bedford Street and the property can be found on the left hand side.



Floor Plan



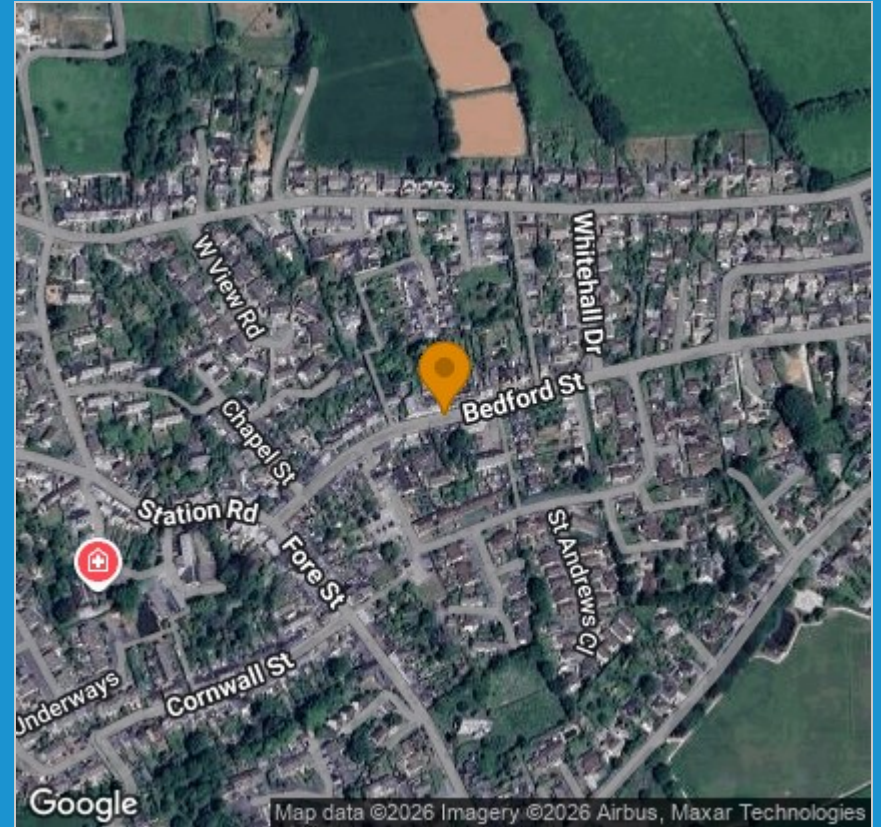
Viewing

Please contact our View Property Tavistock Office on 01822 614614 if you wish to arrange a viewing appointment for this property or require further information.

These particulars, whilst believed to be accurate are set out as a general outline only for guidance and do not constitute any part of an offer or contract. Intending purchasers should not rely on them as statements of representation of fact, but must satisfy themselves by inspection or otherwise as to their accuracy. No person in this firm's employment has the authority to make or give any representation or warranty in respect of the property.

Unit 1, The Old Dairy Paddons Row, Tavistock, Devon, PL19 0HF
Tel: 01822 614614 Email: Tavy@viewproperty.org.uk www.viewproperty.org.uk

Area Map



Energy Efficiency Graph

