



51 Courtland Road, Torquay – TQ2 6JU

Guide Price **£285,000**





51 Courtland Road

Torquay

A stylish three bedroom Shiphay home with no onward chain, driveway parking, garage, refitted kitchen, modern bathroom and landscaped rear garden

Council Tax band: C

Tenure: Freehold

EPC Energy Efficiency Rating: C

EPC Environmental Impact Rating:

- A well presented three bedroom terraced home
- Stylish refitted kitchen with granite worktops
- Open plan kitchen and dining area
- Well presented rear living room with feature fireplace
- Modern family bathroom
- Ground floor cloakroom/WC
- Driveway parking and integral garage
- Generous landscaped rear garden with decked terraces
- No onward chain
- Sought after Shiphay location



51 Courtland Road

Torquay

Courtland Road is positioned in the ever-popular Shiphay area of Torquay, a location consistently sought after by families, professionals and buyers wanting convenient access to schools, transport links and everyday amenities. Shiphay is especially well placed for schooling, with Shiphay Learning Academy and Sherwell Valley Primary School within easy reach, alongside Torquay Boys' Grammar School and Torquay Girls' Grammar School. Torquay Academy and a range of further primary and secondary options are also accessible across the wider area. For day-to-day amenities, Shiphay has local shops, convenience stores, pharmacies and services close by, while The Willows retail area provides Marks & Spencer, Sainsbury's, Boots, Next and other larger retailers. Torbay Hospital is also nearby, making the area particularly practical for those working locally or needing regular access to medical services.

Absolute Sales & Lettings

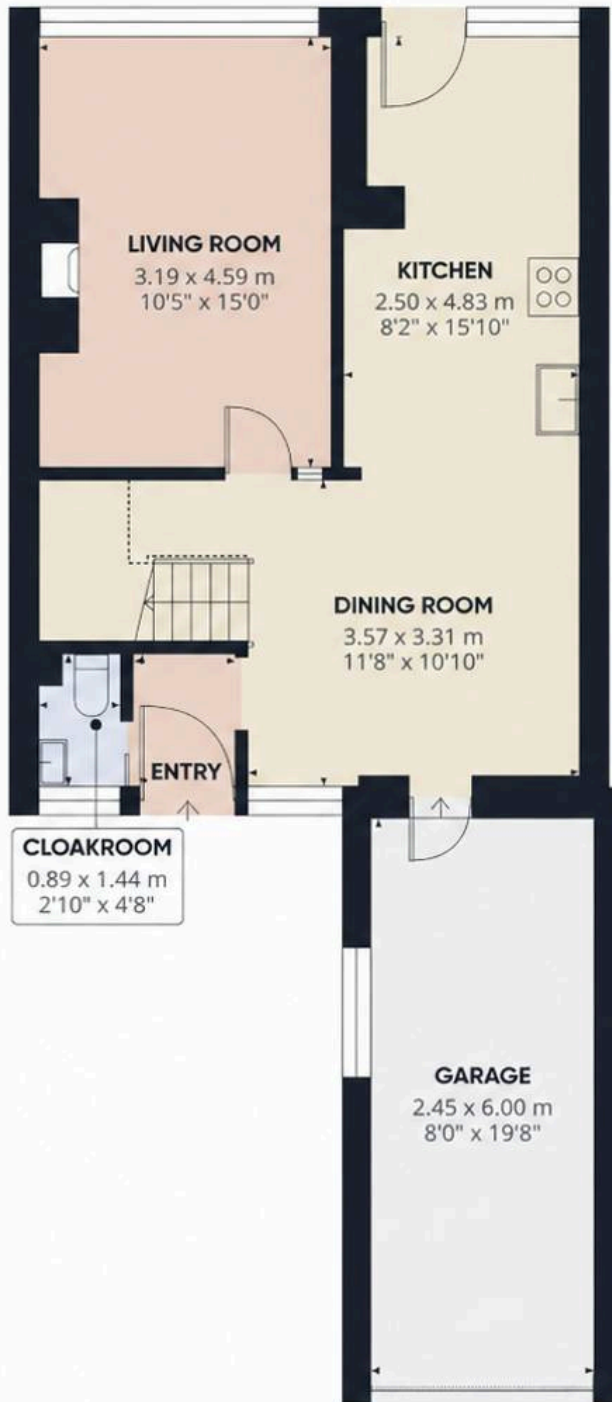
Absolute Sales & Lettings Ltd, 13 Ilsham Road - TQ1 2JG

01803 214214

torquay@movewithabsolute.co.uk

movewithabsolute.co.uk/





Ground floor



Floor 1

